

Chemoproteomics

Drug:Target Deconvolution and Identification Services

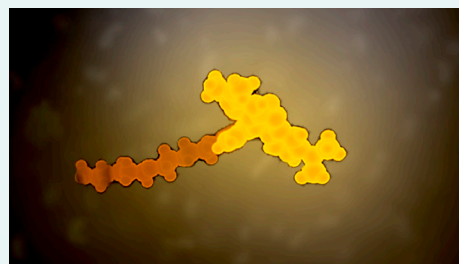
Here's how the service works

You provide the
target compound.



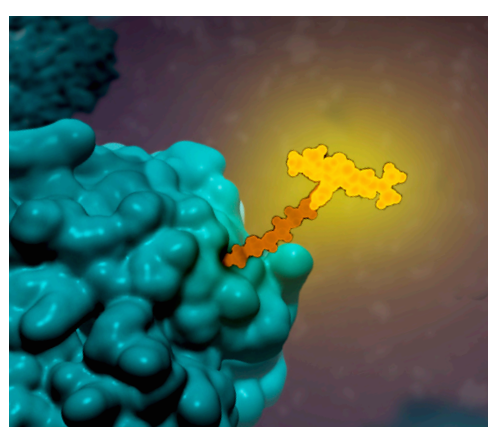
The target compound is modified to
include a chloroalkane ligand.

Chloroalkane ligands bind
irreversibly and specifically
to HaloTag® Protein.

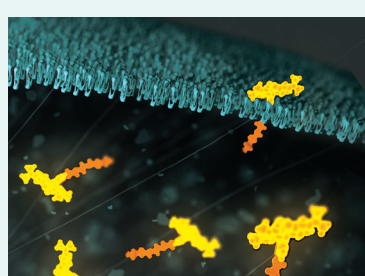


Control experiments verify the
modified compound:

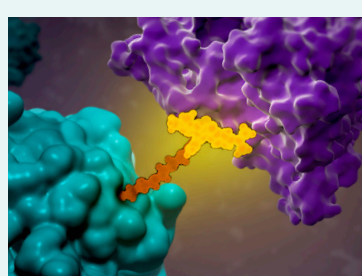
- Produces the desired phenotype in a cell-based assay
- Is cell-permeable
- Binds to the HaloTag® protein



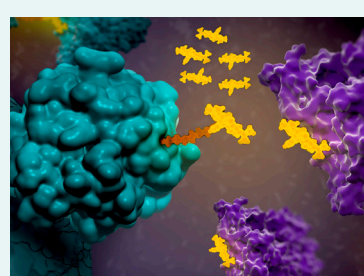
Proteins that interact with the compound
are captured in pull-down assays:



Cells are treated
with the modified
compound or a
no-compound
control



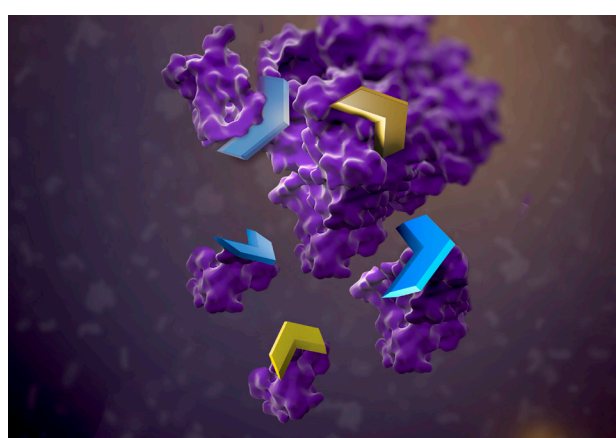
Cells are lysed
and interacting
proteins captured
using HaloTag®
Resin



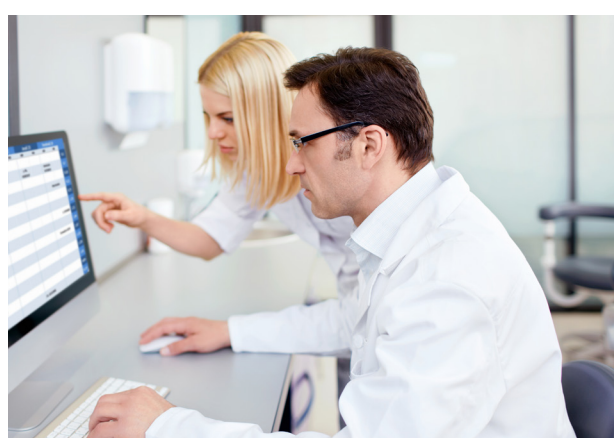
Interacting
proteins are eluted
using parental
compound



Interacting partners are identified by
mass spectrometry.



Proteins are digested
and identified



You receive a comprehensive
report of identified proteins
and mass spec data

To request a consult, visit:
www.promega.com/chemoproteomics