

TECHNICAL MANUAL

SIRP α /CD47 Blockade Bioassay, Fc-Dependent, Propagation Model

Instructions for Use of Products
JA4802, GA6000 and GA6030

SIRP α /CD47 Blockade Bioassay, Fc-Dependent, Propagation Model

All technical literature is available at: www.promega.com/protocols/
 Visit the web site to verify that you are using the most current version of this Technical Manual.
 E-mail Promega Technical Services if you have questions on use of this system: techserv@promega.com

1. Description	2
2. Product Components and Storage Conditions	7
3. Before You Begin	7
3.A. Materials to Be Supplied by the User	8
4. Preparing SIRP α Effector Cells.....	9
4.A. Cell Thawing and Initial Cell Culture	9
4.B. Cell Maintenance and Propagation	9
4.C. Cell Freezing and Banking	10
5. Preparing CD47 CHO-K1 Target Cells	10
5.A. Cell Thawing and Initial Cell Culture	10
5.B. Cell Maintenance and Propagation	11
5.C. Cell Freezing and Banking	11
6. Assay Protocol	12
6.A. Preparing Cell Plating Medium, Assay Buffer, Bio-Glo-NL™ Reagent and Antibody Samples.....	13
6.B. Plate Layout Design	14
6.C. Preparing and Plating CD47 CHO-K1 Target Cells	15
6.D. Preparing Antibody Serial Dilutions.....	16
6.E. Preparing SIRP α Effector Cells	17
6.F. Adding SIRP α Effector Cells and Antibody to Assay Plates.....	17
6.G. Preparing and Adding Bio-Glo-NL™ Reagent	18
6.H. Data Analysis	18
7. Troubleshooting	19
8. References	20
9. Appendix.....	21
9.A. Representative Assay Results	21
9.B. Composition of Buffers and Solutions	22
9.C. Related Products.....	22

1. Description

Myeloid cells, including monocytes, macrophages and dendritic cells, play a central role in cancer immunosurveillance by eliminating tumor cells via phagocytosis and presenting tumor antigens to naïve T cells. These cell types express IgG receptors (FcγR) that drive recognition and phagocytosis of antibody-opsonized cells. This process, termed antibody-dependent cellular phagocytosis (ADCP), is an important mechanism of action (MOA) for antibody-based immunotherapies. Therapeutic strategies designed to elicit or enhance ADCP have shown increased efficacy against a variety of human cancers (1–4).

Phagocytosis is regulated by a complex network of checkpoints that facilitate removal of aberrant or infected cells while preserving healthy tissues. CD47, a “marker-of-self” protein expressed on virtually all cell types, engages the myeloid-specific receptor signal regulatory protein alpha (SIRPα) to prevent phagocytosis of healthy cells (5). Despite its important physiological role, this SIRPα/CD47 checkpoint contributes to immune escape by tumor cells, many of which overexpress CD47 and thereby evade phagocytosis. Biologics that inhibit SIRPα/CD47 interaction promote phagocytosis of tumor cells *in vitro* and have shown promising therapeutic efficacy. SIRPα/CD47 inhibitors bearing a functional Fc domain may further enhance tumor clearance through combined checkpoint blockade and initiation of ADCP (6).

Current methods for assessing the activity of SIRPα/CD47 checkpoint inhibitors rely on primary monocyte-derived macrophages and direct measurement of phagocytosis. These assays are laborious and highly variable due to their reliance on donor cells, complex assay protocols and nonqualified assay reagents. As a result, these assays are difficult to establish in a quality-controlled setting.

The SIRPα/CD47 Blockade Bioassay, Fc-Dependent, Propagation Model^(a-d) (Cat.# JA4802) is a bioluminescent reporter cell-based assay that overcomes the limitations of existing assays. The bioassay is easy-to-use, quantitative and demonstrates the functional response of SIRPα/CD47 inhibitors bearing a functional Fc domain. It can be used to measure the potency and stability of antibodies and other Fc-functional biologics that block SIRPα/CD47 interaction. The assay consists of two genetically engineered cell lines:

- **SIRPα Effector Cells:** A monocytic cell-line with a stably integrated NanoLuc[®] (NL) luciferase reporter driven by FcγR and SIRPα/CD47 pathway-dependent response elements.
- **CD47 CHO-K1 Target Cells:** CHO-K1 cells engineered to express human CD47.

The SIRPα Effector Cells and CD47 CHO-K1 Target Cells are provided in Cell Propagation Model (CPM) format, which includes cryopreserved cells that can be thawed, propagated and banked for long-term use. Cell banks for the SIRPα Effector Cells (Cat.# GA6000) and CD47 CHO-K1 Target Cells (Cat.# GA6030) are also available.

When the two cell types are cocultured, SIRPα/CD47 interaction prevents FcγR signaling and promoter-driven luminescence. Addition of Fc-functional anti-SIRPα or anti-CD47 blocking antibody disrupts SIRPα/CD47 interaction and activates FcγR, resulting in promoter-driven luminescence (Figure 1). The bioluminescent signal is quantified using the Bio-Glo-NL[™] Luciferase Assay System and a standard luminometer such as the GloMax[®] Discover System (see Related Products, Section 9.C).

Note: The SIRPα/CD47 Blockade Bioassay, Fc-Dependent, Propagation Model, was designed specifically for Fc-functional SIRPα/CD47 checkpoint inhibitors. For Fc-silent or Fc-null inhibitors, we recommend using the SIRPα/CD47 Blockade Bioassay (Cat.# JA6012).

The SIRPα/CD47 Blockade Bioassay, Fc-Dependent, Propagation Model, reflects the mechanism of action of biologics designed to block SIRPα/CD47 and activate FcγR. Specifically, FcγR-mediated luminescence is increased in a dose-dependent manner following anti-CD47 blocking antibody [clone B6.H12] addition, but not after anti-4-1BB, anti-ICOS or anti-PD-1 blocking antibody addition. Increased luminescence is dependent upon SIRPα/CD47 blockade (Figure 2).

The bioassay is prequalified following International Council for Harmonization of Technical Requirements for Pharmaceuticals for Human Use (ICH) guidelines and shows the precision, accuracy and linearity required for routine use in potency and stability studies (Table 1 and Figure 3). The bioassay can be performed in a two-day timeframe, and the workflow is simple, robust and compatible with both 96- and 384-well plate formats used for antibody screening in early drug discovery (Figure 4).

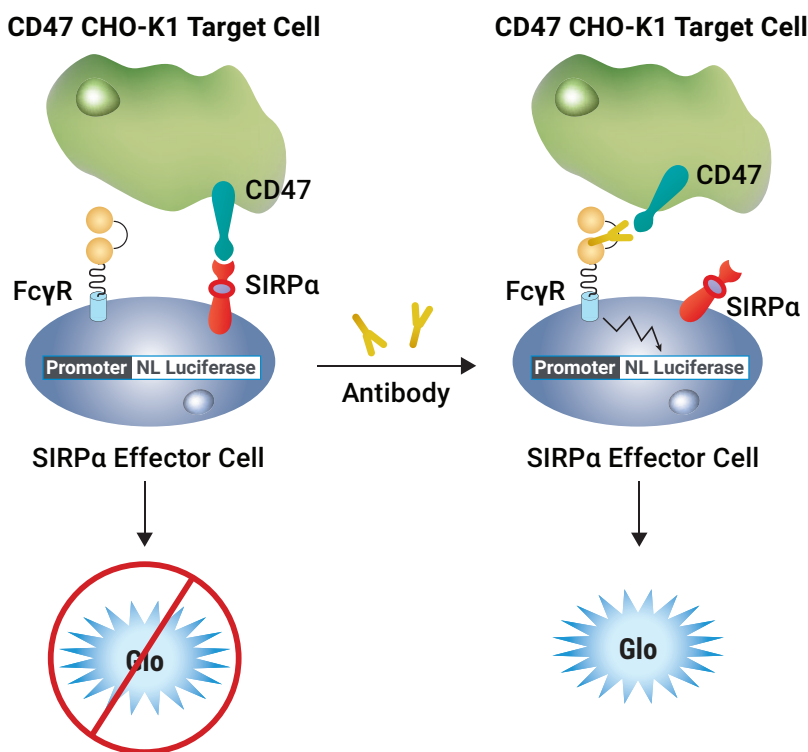


Figure 1. Representation of the SIRPα/CD47 Blockade Bioassay, Fc-Dependent. The SIRPα/CD47 Blockade Bioassay, Fc-Dependent consists of SIRPα Effector Cells, CD47 CHO-K1 Target Cells, and an Fc-functional SIRPα/CD47 inhibitor. When all components are cocultured, the Fc-functional SIRPα/CD47 inhibitor disrupts SIRPα/CD47 interaction and activates FcγR on the surface of the effector cells. This results in promoter-driven luminescence that can be detected and quantified using Bio-Glo-NL™ Reagent.

1. Description (continued)

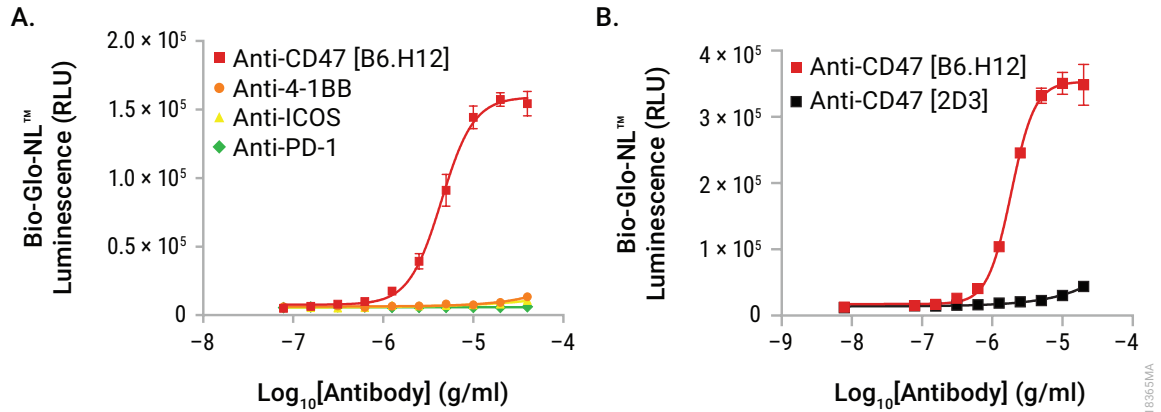


Figure 2. The SIRPα/CD47 Blockade Bioassay, Fc-Dependent reflects the MOA and specificity for antibodies designed to block SIRPα/CD47 interaction and activate FcγR. Panel A. SIRPα Effector Cells were incubated with CD47 CHO-K1 Target Cells in the presence of serial titrations of blocking antibodies as indicated. **Panel B.** SIRPα Effector Cells were incubated with CD47 CHO-K1 Target Cells in the presence of anti-CD47 blocking [B6.H12] or nonblocking [2D3] antibody. After a 4-hour induction, Bio-Glo-NL™ Reagent was added and luminescence quantified using the GloMax® Discover System. Data were fitted to a four-parameter logistic curve using GraphPad Prism® software. Data were generated using thaw-and-use cells.

Table 1. SIRPa/CD47 Blockade Bioassay, Fc-Dependent, Shows Precision, Accuracy and Linearity.

Parameter	Results	
	% Expected Relative Potency	% Recovery
Accuracy	50	95.6
	70	93.9
	100	97.9
	130	95.8
	150	99.5
Repeatability (% CV)	100% (Reference)	5.0
Intermediate Precision (% CV)		4.7
Linearity (r ²)		0.998
Linearity (y = mx + b)		y = 1.006x - 3.570

A 50–150% theoretical potency series of Anti-CD47 blocking antibody [B6.H12] was analyzed in triplicate in three independent experiments performed on three days by two analysts using the SIRPa/CD47 Blockade Bioassay, Fc-Dependent. Bio-Glo-NL™ Reagent was added and luminescence quantified using the GloMax® Discover System. Data were analyzed and relative potencies calculated after parallelism determination using JMP® software. Data were generated using thaw-and-use cells.

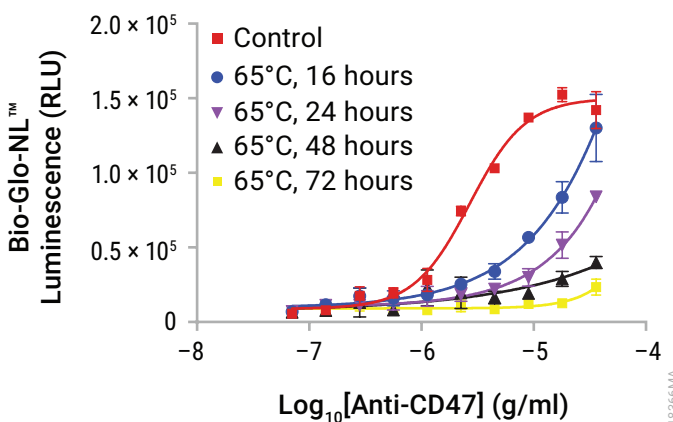


Figure 3. The SIRPa/CD47 Blockade Bioassay, Fc-Dependent, is stability-indicating. Samples of Anti-CD47 blocking antibody [B6.H12] were maintained at 4°C (control) or heat-treated at the indicated times and temperatures, then analyzed using the SIRPa/CD47 Blockade Bioassay, Fc-Dependent. Bio-Glo-NL™ Reagent was added and luminescence quantified using the GloMax® Discover System. Data were fitted to a four-parameter logistic curve using GraphPad Prism® software. Data were generated using thaw-and-use cells.

1. Description (continued)

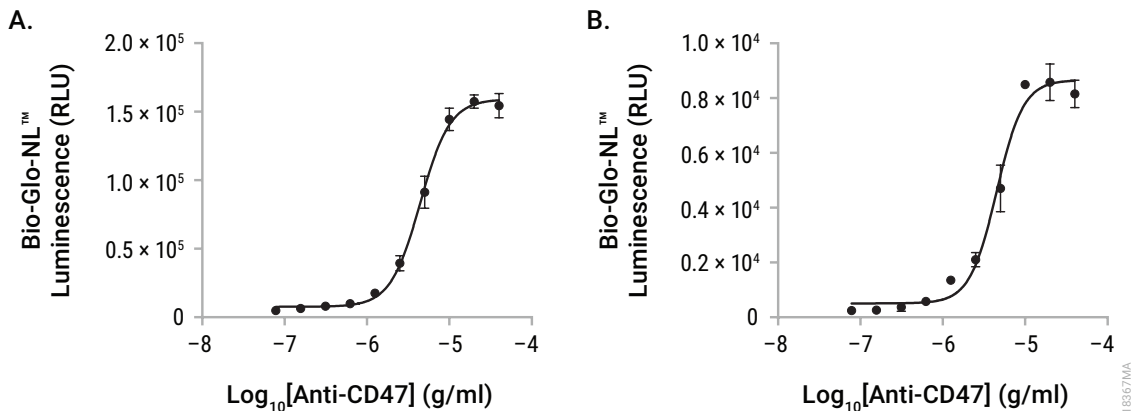


Figure 4. The SIRPα/CD47 Blockade Bioassay, Fc-Dependent is amenable to 384-well plate format. Panel A. The SIRPα/CD47 Blockade Bioassay, Fc-Dependent, was performed in 96-well plates as described in this technical manual, with a titration of Anti-CD47 blocking antibody [B6.H12]. **Panel B.** The SIRPα/CD47 Blockade Bioassay, Fc-Dependent, was performed in 384-well format as briefly described here. Thaw-and-use CD47 CHO-K1 Target Cells were thawed and plated at 2×10^3 cells/15μl/well 16–24 hours prior to assay, in a 384-well white assay plate (e.g., Corning® Cat.# 3570). On the day of the assay, 5μl of 5X serially diluted Anti-CD47 blocking antibody [B6.H12] was added, followed by 6×10^3 /5μl/well of SIRPα Effector Cells. After a 4-hour incubation at 37°C, 5% CO₂, 25μl/well of Bio-Glo-NL™ Reagent was added and luminescence quantified using the GloMax® Discover System. Data were fitted to four-parameter logistic curves using GraphPad Prism® software. The EC₅₀ values were 4.4 and 4.4μg/ml for the 96- and 384-well formats, respectively, and the fold induction was 32 and 35 for 96- and 384-well formats, respectively. Data were generated using thaw-and-use cells.

2. Product Components and Storage Conditions

PRODUCT	SIZE	CAT.#
SIRPa/CD47 Blockade Bioassay, Fc-Dependent Propagation Model	1 each	JA4802

Not for Medical Diagnostic Use. Includes:

- 2 vials SIRPa Effector Cells (CPM), 1.32×10^7 cells/ml (1.0ml per vial)
- 2 vials CD47 CHO-K1 Target Cells (CPM), 3.3×10^6 cells/ml (1.0ml per vial)

PRODUCT	SIZE	CAT.#
SIRPa/CD47 Effector Cells, Cell Bank	1 each	GA6000

Not for Medical Diagnostic Use. Includes:

- 50 vials SIRPa Effector Cells (CPM), 1.32×10^7 cells/ml (1.0ml per vial)

PRODUCT	SIZE	CAT.#
CD47 CHO-K1 Target Cells, Cell Bank	1 each	GA6030

Not for Medical Diagnostic Use. Includes:

- 50 vials CD47 CHO-K1 Target Cells (CPM) 3.3×10^6 cells/ml (1.0ml per vial)

Note: Thaw and propagate one vial to create frozen cell banks before use in an assay. The remaining vial(s) should be reserved for future use.

Storage Conditions: Upon arrival, immediately transfer the cell vials to below -140°C (freezer or liquid nitrogen vapor phase) for long-term storage. **Do not** store cell vials submerged in liquid nitrogen. **Do not** store cell vials at -80°C because this will decrease cell viability and cell performance.

3. Before You Begin

Please read through the entire protocol to become familiar with the components and the assay procedure before beginning.

Remove the product label from the box containing vials with cells or note the catalog number, lot number and dispensed lot number from the label. This information can be used to download documents for the specified product from the web site, such as the Certificate of Analysis.

! **Note:** The SIRPa/CD47 Blockade Bioassay, Fc-Dependent, Propagation Model uses the Bio-Glo-NL™ Luciferase Assay System (Cat.# J3081, J3082, J3083) for detection. **Do not** use the Bio-Glo™ Luciferase Assay System (Cat.# G7940, G7941).

The SIRPa/CD47 Blockade Bioassay, Fc-Dependent, Propagation Model, is intended for use with user-provided antibodies or other Fc-functional biologics designed to inhibit SIRPa/CD47 interaction and activate FcγR. The recommended cell plating densities, induction time and assay buffer components described in Section 6 were established using Anti-CD47 blocking antibody [B6.H12] with the required CD47 CHO-K1 Target Cells. Representative data generated using Anti-CD47 blocking antibody [B6.H12] are shown in Section 9.A., Representative Assay Results. You may need to adjust the parameters provided here and optimize assay conditions for your own antibody or biologic samples.

Cell thawing, propagation and banking should be performed exactly as described in Sections 4 and 5. Cell seeding and propagation densities have been optimized to ensure stable cell growth, which is reflected in a steady cell doubling rate, to achieve optimal, consistent performance. An accurate, reliable and reproducible cell counting method is required for routine cell culturing and optimal bioassay performance.

The SIRPα/CD47 Blockade Bioassay, Fc-Dependent, Propagation Model, produces a bioluminescent signal and requires a sensitive luminescence plate reader. Bioassay development and performance data included in this Technical Manual were generated using the GloMax® Discover System (see Section 9.C, Related Products). An integration time of 0.5 second/well was used for all readings. The bioassay is compatible with most other plate-reading luminometers, though relative luminescence unit (RLU) readings will vary with the sensitivity and settings of each instrument. If using a reader with adjustable gain, we recommend a high-gain setting. The use of different instruments and gain adjustment will affect the magnitude of the raw data but should not affect the measured relative potency of test samples.

3.A. Materials to Be Supplied by the User

(Composition of Buffers and Solutions is provided in Section 9.B.)


Reagents

- user-defined, anti-CD47 blocking antibody or other Fc-functional biologic designed to inhibit SIRPα/CD47 interaction
- RPMI 1640 medium with L-glutamine and HEPES (e.g., Corning® Cat.# 10-041-CV or GIBCO™ Cat.# 22400105)
- Ham's F-12 medium with L-glutamine (e.g., GIBCO™ Cat.# 11765062)
- fetal bovine serum (e.g., VWR Cat.# 89510-194, GIBCO™ Cat.# 35-015-CV or HyClone Cat.# SH30071.03)
- hygromycin B (e.g., GIBCO™ Cat.# 10687010)
- G418 Geneticin® (e.g., GIBCO™ Cat.# 10131035)
- DMSO (e.g., Sigma Cat.# D2650)
- Accutase® solution (e.g., Sigma Cat.# A6964)
- DPBS (e.g., GIBCO™ Cat.# 14190144)
- Bio-Glo-NL™ Luciferase Assay System (Cat.# J3081, J3082, J3083)
- Trypan blue solution (e.g., Sigma Cat.# T8154)
- **optional:** Anti-CD47 blocking antibody [B6.H12] (e.g., Invitrogen Cat.# 16-0479-81)

Supplies and Equipment


- solid-white, flat-bottom 96-well assay plates (e.g., Corning® Cat.# 3917) or 384-well assay plates (e.g., Corning® Cat.# 3570) for plating and reading luminescence
- sterile clear V-bottom 96-well plate with lid (e.g., Costar® Cat.# 3896) for low volume antibody preparation (100-300µl per dilution), or sterile dilution reservoirs with lid (Dilux, Cat.# D-1002) for high volume antibody preparation (300µl-5ml per dilution)
- pipettes (single-channel and 12-channel; for best results use both manual and electronic pipettes as needed)
- sterile 15ml and 50ml conical tubes
- sterile reagent reservoirs (e.g., Corning®/Costar® Cat.# 4870)
- 37°C, 5% CO₂ incubator
- 37°C water bath
- sensitive plate reader with glow luminescence measuring capability or luminometer (e.g., GloMax® Discover System or equivalent)

4. Preparing SIRPa Effector Cells

 Follow institutional guidelines for handling, including use of personal protective equipment (PPE) and waste disposal for biohazardous material.

4.A. Cell Thawing and Initial Cell Culture

1. Prepare 20ml of initial cell culture medium by adding 2ml of FBS to 18ml of RPMI 1640 medium prewarmed to 37°C. This initial cell culture medium will be used for culturing the cells immediately after thawing.
2. Transfer 9ml of prewarmed initial cell culture medium to a 15ml conical tube.
3. Remove one vial of SIRPa Effector Cells from storage at -140°C and thaw in a 37°C water bath with gentle agitation (do not invert cell vial) until just thawed (typically 2–3 minutes).
4. Transfer all of the cells (approximately 1ml) to the 15ml conical tube containing 9ml of prewarmed initial cell culture medium.
5. Centrifuge at 150 × g for 10 minutes.
6. Carefully aspirate the medium and resuspend the cell pellet in 7ml of prewarmed initial cell culture medium.
7. Transfer the cell suspension to a T25 tissue culture flask and place the flask horizontally in a humidified 37°C, 5% CO₂ incubator.
8. Incubate for approximately 24 hours before passaging the cells.
9. Passage the cells at a seeding density of 5 × 10⁵ viable cells/ml using cell growth medium containing antibiotics.

 **Note:** When passaging cells for the first time after thawing, it is critical to use a minimum seeding density of 5 × 10⁵ viable cells/ml. Lower densities may reduce cell viability and growth.

10. Incubate for approximately 48 hours before passaging the cells according to the schedule outlined in Section 4.B.

4.B. Cell Maintenance and Propagation

For cell maintenance and propagation, use cell growth medium containing antibiotics and monitor cell viability and doubling rate during propagation. The cell growth rate will stabilize by 7–10 days after thawing, at which time cell viability is typically >90%, and the average cell doubling rate is 48 hours. Passage number should be recorded for each passage. In our experience, cells maintain their functionality for up to 25 passages, or 29 cell doublings, if passaging is performed on a Monday-Wednesday-Friday schedule.

1. On the day of cell passage, measure cell viability and density by Trypan blue staining.
2. Seed the cells at a density of 5 × 10⁵ cells/ml if passaging every two days (e.g., Monday-Wednesday or Wednesday-Friday) or 3 × 10⁵ cells/ml if passaging every three days (e.g., Friday-Monday). Always maintain the flasks in a horizontal position in the incubator. Do not allow the cells to grow to a density greater than 1 × 10⁶ cells/ml.
3. Maintain the cell culture by adding fresh cell growth medium to the cell suspension in the original flask or by transferring the cells to a new flask while maintaining a consistent ratio of culture volume to flask surface area (e.g., 25ml volume per T75 flask or 50ml volume per T150 flask).
4. Place the flasks horizontally in a humidified, 37°C, 5% CO₂ incubator.

4.C. Cell Freezing and Banking

1. On the day of cell freezing, prepare fresh cell freezing medium and keep on ice.
2. Gently mix the cells with a pipette to create a homogenous cell suspension.
3. Remove a sample for cell counting by Trypan blue staining. Calculate the volume of cell freezing medium needed based on desired cell freezing densities of 1×10^7 – 2×10^7 cells/ml.
4. Transfer the cell suspension to 50ml sterile conical tubes or larger sized centrifuge tubes, and centrifuge at $150 \times g$, 4°C for 10–15 minutes.
5. Gently aspirate the medium, taking care not to disturb the cell pellet.
6. Carefully resuspend the cell pellet in ice-cold cell freezing medium to a final cell density of 1×10^7 – 2×10^7 cells/ml. Combine the cell suspensions into a single tube and dispense into cryovials.
7. Freeze the cells using a controlled-rate freezer (preferred), or a Mr. Frosty® or a Styrofoam® rack in a -80°C freezer overnight. Transfer the vials to -140°C or below for long-term storage.

5. Preparing CD47 CHO-K1 Target Cells

5.A. Cell Thawing and Initial Cell Culture

1. Prepare 30ml of initial cell culture medium by adding 3ml of FBS to 27ml of Ham's F12 medium prewarmed to 37°C . This initial cell culture medium will be used for culturing the cells immediately after thawing.
2. Transfer 9ml of prewarmed initial cell culture medium to a 50ml conical tube.
3. Remove one vial of CD47 CHO-K1 Target Cells from storage at -140°C and thaw in a 37°C water bath with gentle agitation (no inversion) until just thawed (typically 2–3 minutes).
4. Transfer all the cells (approximately 1ml) to the 50ml conical tube containing 9ml of prewarmed initial cell culture medium.
5. Centrifuge at $180 \times g$ for 5 minutes.
6. Carefully aspirate the medium and resuspend the cell pellet in 15ml of prewarmed initial cell culture medium.
7. Transfer the cell suspension to a T75 tissue culture flask and place the flask horizontally in a 37°C , 5% CO_2 incubator.
8. Incubate for approximately 48 hours before passaging the cells according to the schedule outlined in Section 5.B.

5.B. Cell Maintenance and Propagation

For cell maintenance and propagation, use cell growth medium containing antibiotics and monitor cell viability and doubling rate during propagation. The cell growth rate will stabilize by 7–10 days post-thaw, at which time cell viability is typically >95%, and the average cell doubling rate is approximately 18–22 hours. Passage number should be recorded for each passage. In our experience, cells maintain their functionality for up to 25 passages if passaging is performed on a Monday-Wednesday-Friday schedule.

1. On the day of cell passage, aspirate the cell culture medium and wash the cells with DPBS.
2. Add 2ml of Accutase® solution to each T75 flask and place in a 37°C, 5% CO₂ incubator for 5–7 minutes or until the cells round up and detach from the bottom of the flask.
3. Add 8ml of cell growth medium to each T75 flask. Transfer the cell suspension to a sterile 15ml or 50ml conical tube.
4. Count the cells by Trypan blue staining. We suggest seeding the cells at a density of 4×10^4 cells/cm² if passaging every two days (e.g., Monday-Wednesday or Wednesday-Friday) or 1.33×10^4 cells/cm² if passaging every three days (e.g., Friday-Monday).
5. Add an appropriate amount of cell growth media to a new flask.
6. Transfer the appropriate volume of cell suspension to achieve the desired cell seeding density per area.
7. Place the flasks horizontally in a humidified 37°C, 5% CO₂ incubator.

5.C. Cell Freezing and Banking

1. On the day of cell freezing, make fresh cell freezing medium and keep on ice.
2. Aspirate the cell culture medium and wash the cells with DPBS.
3. Add 2ml of Accutase® solution to each T75 flask and place in a 37°C, 5% CO₂ incubator for 5–7 minutes or until the cells round up and detach from the bottom of the flask.
4. Add 8ml of cell growth medium to each T75 flask. Transfer the cell suspension to a sterile 15ml or 50ml conical tube.
5. Remove a sample for cell counting by Trypan blue staining. Calculate the volume of cell freezing medium needed based on desired cell freezing densities of 5×10^6 – 2×10^7 cells/ml.
6. Transfer the cell suspension to 50ml sterile conical tubes or larger-sized centrifuge tubes, and centrifuge for 10 minutes at $130 \times g$ at 4°C.
7. Carefully aspirate the supernatant and avoid disturbing the cell pellet.
8. Gently resuspend the cell pellet in ice-cold cell freezing medium to a final cell density of 5×10^6 – 2×10^7 cells/ml. Combine the cell suspensions into a single tube and dispense into cryovials.
9. Freeze the cells using a controlled-rate freezer (preferred), or a Mr. Frosty® or a Styrofoam® rack in a –80°C freezer overnight. Transfer the vials to at or below –140°C for long-term storage.

6. Assay Protocol

This procedure illustrates the use of the SIRP α /CD47 Blockade Bioassay, Fc-Dependent, to test two antibody samples against a reference sample in a single assay run using the SIRP α /CD47 Blockade Bioassay, Fc-Dependent, Propagation Model, format (Figure 5). Each test and reference antibody is run in triplicate, in a ten-point dilution series, in a single 96-well assay plate using the inner 60 wells. Other experimental and plate layouts are possible but may require further optimization.

Note: When preparing test and reference antibodies, choose an appropriate starting concentration and dilution scheme to achieve a complete dose-response curve with proper upper and lower asymptotes and sufficient points on the slope. For reference, we use 20 μ g/ml as a starting concentration (1X) and twofold serial dilution when testing Anti-CD47 blocking antibody [B6.H12].

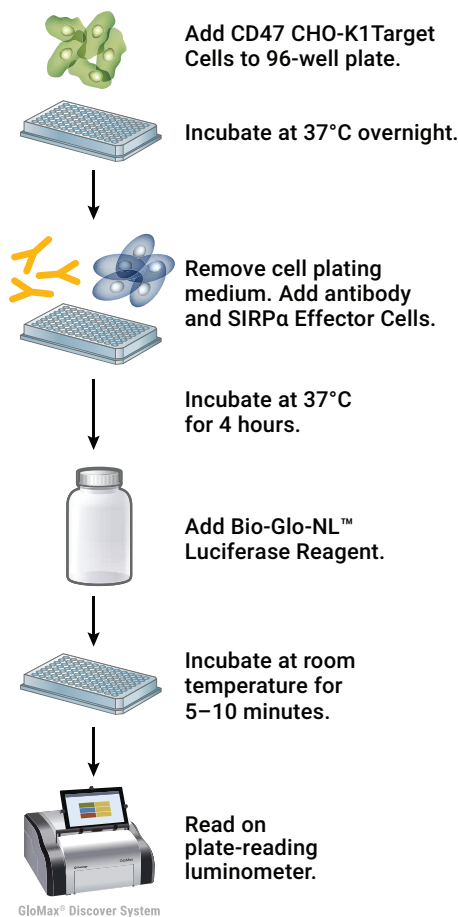


Figure 5. Schematic protocol for the SIRP α /CD47 Blockade Bioassay, Fc-Dependent, Propagation Model.


6.A. Preparing Cell Plating Medium, Assay Buffer, Bio-Glo-NL™ Reagent and Antibody Samples

CD47 CHO-K1 Target Cells Plating Medium: On the day before the assay, prepare an appropriate amount of cell plating medium (90% Ham's F-12/10% FBS). Thaw the FBS overnight at 4°C or in a 37°C water bath on the day of use. Mix well and warm to 37°C before use. For reference, 40ml of cell plating medium is typically sufficient for 120 wells in a 96-well assay format using the inner 60 wells.

Assay Buffer: On the day of the assay, prepare an appropriate amount of assay buffer (98% RPMI 1640/2% FBS). Mix well and warm to 37°C before use. For reference, 30ml of assay buffer is typically sufficient for 120 wells in a 96-well assay format using the inner 60 wells.

Note: The recommended assay buffer contains 2% FBS. This concentration of FBS works well for antibodies we have tested. If you experience assay performance issues when using this assay buffer, we recommend testing different serum concentrations in the range of 0.5–10%.

Bio-Glo-NL™ Luciferase Reagent: For reference, 10ml of Bio-Glo-NL™ Reagent is sufficient to assay 120 wells in a 96-well assay format. The Bio-Glo-NL™ Luciferase Assay Substrate should always be stored at –30°C to –10°C. Thaw the Bio-Glo-NL™ Luciferase Assay Buffer at room temperature (do not exceed 25°C) during the 4-hour assay induction period. We recommend preparing the reconstituted Bio-Glo-NL™ Luciferase Assay Reagent immediately before use. For instructions on use of the Bio-Glo-NL™ Luciferase Assay System, please refer to the *Bio-Glo-NL™ Luciferase Assay System Quick Protocol*, #FB227.

 **Note:** The SIRPα/CD47 Blockade Bioassay, Fc-Dependent, Propagation Model, is compatible only with Bio-Glo-NL™ Luciferase Assay Reagent. **Do not** use Bio-Glo™ Luciferase Assay Reagent with the SIRPα/CD47 Blockade Bioassay, Fc-Dependent, Propagation Model.

Test and Reference Samples: Using assay buffer as the diluent, prepare stock starting dilutions (dilu1, 1.5X final concentration) of two test antibodies (400µl each) and one reference antibody (800µl) in 1.5ml tubes. Store the tubes containing antibody starting dilutions appropriately before making antibody serial dilutions.

Note: If you are using Anti-CD47 blocking antibody [B6.H12], as a reference antibody in your assay, prepare an 800µl starting dilution of 30µg/ml antibody (dilu1, 1.5X final concentration) in assay buffer.

6.B. Plate Layout Design

For the protocol described here, use the plate layout illustrated in Figure 6 as a guide. The protocol describes serial replicate dilutions (n = 3) of test and reference antibody to generate two ten-point dose-response curves for each plate.

Recommended Plate Layout Design													
	1	2	3	4	5	6	7	8	9	10	11	12	
A	B	B	B	B	B	B	B	B	B	B	B	B	Assay Buffer (B)
B	B	no Ab	dilu9	dilu8	dilu7	dilu6	dilu5	dilu4	dilu3	dilu2	dilu1	B	Reference Ab
C	B	no Ab	dilu9	dilu8	dilu7	dilu6	dilu5	dilu4	dilu3	dilu2	dilu1	B	Test Ab
D	B	no Ab	dilu9	dilu8	dilu7	dilu6	dilu5	dilu4	dilu3	dilu2	dilu1	B	Reference Ab
E	B	no Ab	dilu9	dilu8	dilu7	dilu6	dilu5	dilu4	dilu3	dilu2	dilu1	B	Test Ab
F	B	no Ab	dilu9	dilu8	dilu7	dilu6	dilu5	dilu4	dilu3	dilu2	dilu1	B	Reference Ab
G	B	no Ab	dilu9	dilu8	dilu7	dilu6	dilu5	dilu4	dilu3	dilu2	dilu1	B	Test Ab
H	B	B	B	B	B	B	B	B	B	B	B	B	Assay Buffer (B)

Figure 6. Example plate layout showing nonclustered sample locations of test antibody and reference antibody dilution series and wells containing assay buffer only (denoted by “B”).

6.C. Preparing and Plating CD47 CHO-K1 Target Cells

While maintaining the CD47 CHO-K1 Target Cells, follow the recommended cell seeding density (Section 5). Changes in cell culture volume or seeding density will affect cell growth rate and assay performance. Do not allow the cells to grow to 100% confluence. Only use the cells in the assay after the cell doubling rate has stabilized during propagation.

! **Note:** Perform the following steps in a sterile cell culture hood.

1. Passage the CD47 CHO-K1 Target Cells two days before plating for the assay (as described in Section 5) for optimal and consistent assay performance.
2. On the day before performing the assay, prepare CD47 CHO-K1 Target cell plating medium (90% Ham's F-12/10% FBS).
3. Aspirate the cell culture medium from the CD47 CHO-K1 Target Cells and wash with DPBS.
4. Add 2ml of Accutase® solution to each T75 flask, and place the flask in a 37°C, 5% CO₂ incubator for 5–7 minutes or until the cells round up and detach from the bottom of the flask.
5. Add 8ml of CD47 CHO-K1 Target cell plating medium to the flask. Transfer the cell suspension to a 50ml (or larger) conical centrifuge tube.
6. Gently mix and count the CD47 CHO-K1 Target Cells by Trypan blue staining.
7. Centrifuge at 200 × *g* for 5 minutes.
8. Gently resuspend the cell pellet in cell plating medium to achieve a concentration of 1 × 10⁵ viable cells/ml.
9. Transfer the suspension to a sterile reagent reservoir. Using a multichannel pipette, immediately dispense 100µl of the cell suspension to each of the inner 60 wells of a 96-well white flat-bottom assay plate. The final cell number in each well should be 1 × 10⁴ cells/well.
10. Add 100µl of cell plating medium to each of the outside wells of the assay plates.
11. Place lids on the assay plates and incubate at 37°C, 5% CO₂ overnight (18–24 hours).

6.D. Preparing Antibody Serial Dilutions

The instructions described here are for preparation of a single stock of twofold serial dilutions of a single antibody for analysis in triplicate (200µl of each dilution provides a sufficient volume for analysis in triplicate). Alternatively, you can prepare three independent stocks of serial dilutions to generate triplicate samples. To prepare twofold serial dilutions, you will need 800µl of reference antibody at 1.5X the highest antibody concentration in your dose-response curve. You will need 400µl of each test antibody at 1.5X the highest antibody concentration in each of the test antibody dose-response curves. For other dilution schemes, adjust the volumes accordingly.

Note: If you are using Anti-CD47 blocking antibody [B6.H12], as a control in the assay, follow the instructions below to prepare twofold serial dilutions. A twofold serial dilution for test antibodies is listed as an example below as well.

1. On the day of the assay, prepare an appropriate amount of assay buffer as described in Section 6.A.
2. Add 400µl of reference antibody starting dilution (dilu1, 1.5X final concentration) to well 11 of two sterile dilution reservoirs (Figure 7).
3. Add 400µl of each test antibody starting dilution (dilu1, 1.5X final concentration) to well 11 in separate sterile dilution reservoirs (Figure 7).
4. Add 200µl of assay buffer to other wells in sterile dilution reservoirs, from well 10 to well 2.
5. Transfer 200µl of the antibody starting dilutions from well 11 into well 10. Mix well by pipetting. Avoid creating bubbles.
6. Repeat equivalent twofold serial dilutions across the dilution reservoirs from right to left through well 3. Do not dilute into well 2.

Note: Well 2 of each dilution reservoir contains 200µl of assay buffer without antibody as a negative control.

7. Cover dilution reservoirs with lids and keep at ambient temperature (22–25°C) while preparing the SIRPa Effector Cells.

Recommended Dilution Reservoir Layouts for Reference and Test Antibodies.													
	1	2	3	4	5	6	7	8	9	10	11	12	
Reservoir #1		no Ab	dilu9	dilu8	dilu7	dilu6	dilu5	dilu4	dilu3	dilu2	dilu1		Reference Ab
Reservoir #2		no Ab	dilu9	dilu8	dilu7	dilu6	dilu5	dilu4	dilu3	dilu2	dilu1		Reference Ab
Reservoir #3		no Ab	dilu9	dilu8	dilu7	dilu6	dilu5	dilu4	dilu3	dilu2	dilu1		Test Ab
Reservoir #4		no Ab	dilu9	dilu8	dilu7	dilu6	dilu5	dilu4	dilu3	dilu2	dilu1		Test Ab

Figure 7. Example layout showing antibody serial dilutions.

6.E. Preparing SIRPα Effector Cells

While maintaining the SIRPα Effector Cells, follow the recommended cell seeding density. Changes in cell culture volume or seeding density will affect cell growth rate and assay performance. Only use the cells in the assay after the cell doubling rate has stabilized during propagation, and when cell viability is $\geq 90\%$.

1. Passage the cells two days before performing the assay as described in Section 4.B.
2. Count the SIRPα Effector Cells by Trypan blue staining and calculate the cell density and viability.
3. Transfer an appropriate amount of SIRPα Effector Cells from the culture vessel to a 50ml conical tube or larger sized centrifuge tube.
4. Pellet the cells at $150 \times g$ for 10 minutes at ambient temperature, and resuspend the pellet in assay buffer at 70% of the full volume needed to generate the targeted final cell density of 1.2×10^6 cells/ml.
5. Count the cells again and adjust the volume of assay buffer to achieve a final cell density of 1.2×10^6 cells/ml. You will need at least 5ml of SIRPα Effector Cells to fill 120 assay wells, or the inner 60 wells of two assay plates.

6.F. Adding SIRPα Effector Cells and Antibody to Assay Plates

1. Take the 96-well assay plates containing CD47 CHO-K1 Target Cells out of the incubator. Invert the assay plate over a sink to remove the medium. Then, place the inverted plate on paper towels for 5–10 seconds to drain any remaining medium. Alternatively, remove 95 μ l of medium from each of the wells using a manual multichannel pipette.
2. Using a multichannel pipette, add 50 μ l of the appropriate antibody dilution (Figure 7) to the assay plates according to the plate layout in Figure 6.
3. Mix the SIRPα Effector Cells by tube inversion and transfer the suspension to a sterile reagent reservoir. Using a multichannel pipette, immediately dispense 25 μ l of the cell suspension to each of the inner 60 wells of the assay plates. Gently swirl the assay plates to ensure mixing of the Effector Cells and antibody.
4. Add 75 μ l of assay buffer to each of the outside wells of the assay plates.
5. Cover the assay plates with lids and incubate in a 37°C, 5% CO₂ incubator for 4 hours.

Note: The 4-hour incubation was optimized using Anti-CD47 blocking antibody [B6.H12]. We recommend optimizing assay time (3–24 hours) with your antibody or other biologic samples.

6.G. Preparing and Adding Bio-Glo-NL™ Reagent

We recommend preparing the Bio-Glo-NL™ Luciferase Assay Reagent immediately before use. Ensure that the Bio-Glo-NL™ Luciferase Assay Buffer is equilibrated to room temperature (do not exceed 25°C) before reconstituting the reagent. **Do not** store the reconstituted reagent. Once reconstituted, the reagent will lose 10% activity in approximately 8 hours at room temperature.

! **Note:** The SIRPa/CD47 Blockade Bioassay, Fc-Dependent, is compatible only with Bio-Glo-NL™ Luciferase Assay Reagent. **Do not** use Bio-Glo™ Luciferase Assay Reagent with the SIRPa/CD47 Blockade Bioassay, Fc-Dependent.

1. Remove the Bio-Glo-NL™ Luciferase Assay Substrate from –30°C to –10°C storage and mix by pipetting. Briefly centrifuge the tubes if the substrate has collected in the cap or on the sides of the tubes.
2. Prepare the desired amount of reconstituted Bio-Glo-NL™ Luciferase Assay Reagent by combining one volume of substrate with 50 volumes of buffer. For example, if the experiment requires 10ml of reagent, add 200µl of substrate to 10ml of buffer. Ten milliliters (10ml) of Bio-Glo-NL™ Reagent is sufficient for 120 wells (two assay plates, using the inner 60 wells of each plate).
3. Remove assay plates from the incubator after the incubation period and equilibrate to room temperature for 10–15 minutes.
4. Using a manual multichannel pipette, add 75µl of Bio-Glo-NL™ Reagent to the inner 60 wells of the assay plates, taking care not to create bubbles.
5. Add 75µl of Bio-Glo-NL™ Luciferase Assay Reagent to wells B1, D1 and F1 of each assay plate to measure background signal.
6. Wait 5–10 minutes, then measure the luminescence in a GloMax® Discover System or a plate reader with glow-type luminescence reading capabilities. The luminescence intensity will decay gradually, with a signal half-life of approximately 120 minutes at room temperature.

Note: Varying the Bio-Glo-NL™ incubation time will affect the raw relative light unit (RLU) values but should not significantly change the EC₅₀ value and maximum fold induction.

6.H. Data Analysis

1. Determine the plate background by calculating the average RLU from wells B1, D1 and F1.
2. Calculate fold induction:

$$\text{Fold Induction} = \frac{\text{RLU (induced - background)}}{\text{RLU (no antibody control - background)}}$$

3. Graph data as RLU versus Log₁₀ [antibody] and fold induction versus Log₁₀ [antibody]. Fit curves and determine the EC₅₀ value of antibody response using appropriate curve fitting software (such as GraphPad Prism® software).

7. Troubleshooting

For questions not addressed here, please contact your local Promega Branch Office or Distributor. Contact information available at: www.promega.com. E-mail: techserv@promega.com

Symptoms	Causes and Comments
Low luminescence measurements (RLU readout)	<p>Ensure that you are using Bio-Glo-NL™ Reagent, which is designed for NanoLuc® Luciferase reporter bioassays. The SIRPα/CD47 Blockade Bioassay, Fc-Dependent, is not compatible with Bio-Glo™ Reagent, which is designed for firefly luciferase reporter bioassays.</p> <hr/> <p>Choose an instrument designed for plate-reading luminescence detection. Instruments designed primarily for fluorescence detection are not recommended. Luminometers measure and report luminescence as relative values, and actual RLU numbers will vary between instruments.</p> <hr/> <p>Some models of luminometers with low sensitivity should be avoided. If using a reader with an adjustable gain, we recommend a high-gain setting.</p> <hr/> <p>Insufficient cells per well can lead to low RLU. Handle and plate cells according to the instructions to ensure a sufficient number of viable cells per well.</p> <hr/> <p>Low activity of Bio-Glo-NL™ Reagent leads to low RLU. Store and handle Bio-Glo-NL™ Reagent according to the instructions. For best results, prepare immediately before use.</p>
Weak assay response (low fold induction)	<p>Optimize the concentration range of your test sample(s) to achieve a full dose response with complete upper and lower asymptotes. The EC₅₀ value obtained with the SIRPα/CD47 Blockade Bioassay, Fc-Dependent, may vary from the EC₅₀ value obtained using other methods such as primary macrophage-based assays.</p> <hr/> <p>Assay response requires a functional Fc domain. For Fc-silent or Fc-null SIRPα/CD47 inhibitors, we recommend using the SIRPα/CD47 Blockade Bioassay (Cat.# JA6012).</p> <hr/> <p>The assay is sensitive to the concentration of FBS in assay buffer. Optimize the FBS concentration from 0.5–10% in assay buffer if assay performance is not ideal.</p> <hr/> <p>Optimize the assay incubation time within a range of 3–24 hours.</p> <hr/> <p>If untreated control RLU is less than 100-fold above plate reader background RLU, subtract plate background RLU from all samples before calculating fold induction.</p>

7. Troubleshooting (continued)

Symptoms

Variability in assay performance

Causes and Comments

Variations in cell growth conditions including cell plating, harvest density, cell viability and cell doubling time can cause low assay performance and high assay variation. Avoid one-day cell passages whenever possible, especially when using SIRPα Effector Cells. Use high-quality cell culture reagents (especially serum) and plasticware for maintaining cells in culture. Ensure consistent cell growth by handling the cells exactly according to the instructions.

Inappropriate cell handling during cell harvest, including long centrifuge times and high centrifuge speeds can cause low assay performance and high assay variation. Centrifuge the cells exactly according to the instructions.

Inappropriate cell freezing/DMSO exposure can cause low assay performance and high assay variation. Freeze the cells exactly according to the instructions.

Inappropriate cell counting methods can lead to variation in cell numbers in culture and assays and cause high assay variation. Ensure consistent and accurate cell counting methods.

8. References

- Overdijk, M.B. *et al.* (2015) Antibody-mediated phagocytosis contributes to the anti-tumor activity of the therapeutic antibody daratumumab in lymphoma and multiple myeloma. *MAbs* **7**, 311–21.
- Shi, Y. *et al.* (2015) Trastuzumab triggers phagocytic killing of high HER2 cancer cells in vitro and in vivo by interaction with Fcγ receptors on macrophages. *J. Immunol.* **194**, 4379–86.
- VanDerMeid, K.R. *et al.* (2018) Cellular cytotoxicity of next-generation CD20 monoclonal antibodies. *Cancer Immunol. Res.* **6**, 1150–60.
- Cao, X. *et al.* (2022) Promoting antibody-dependent cellular phagocytosis for effective macrophage-based cancer immunotherapy. *Sci. Adv.* **8**, eabl9171.
- Oldenborg, P.A. *et al.* (2000) Role of CD47 as a marker of self on red blood cells. *Science* **288**, 2051–4.
- Veillette, A. and Chen, J. (2018) SIRPα–CD47 immune checkpoint blockade in anticancer therapy. *Trends Immunol.* **39**, 173–84.

9. Appendix

9.A. Representative Assay Results

The following data were generated using the SIRPα/CD47 Blockade Bioassay, Fc-Dependent, Propagation Model with Anti-CD47 blocking antibody [B6.H12] (Figure 8).

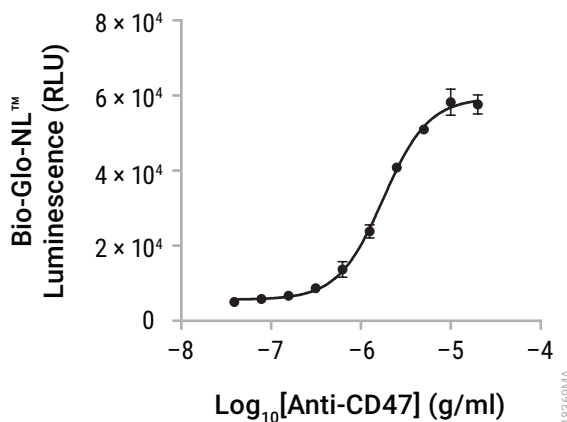


Figure 8. The SIRPα/CD47 Blockade Bioassay, Fc-Dependent, Propagation Model, measures the activity of Anti-CD47 blocking antibody. CD47 CHO-K1 Target Cells were added to a 96-well assay plate 24 hours prior to the assay. On the day of assay, SIRPα Effector Cells and a titration of Anti-CD47 blocking antibody [B6.H12], were added. After a 4-hour induction at 37°C, Bio-Glo-NL™ Reagent was added and luminescence measured using the GloMax® Discover System. Data were fitted to a four-parameter logistic curve using GraphPad Prism® software. The EC₅₀ was 1.8µg/ml and the fold induction was 12.

9.B. Composition of Buffers and Solutions

initial cell culture medium for SIRPα Effector Cells
 90% RPMI 1640 with L-glutamine and HEPES
 10% FBS

initial cell culture medium for CD47 CHO-K1 Target Cells
 90% Ham's F12
 10% FBS

cell growth medium for SIRPα Effector Cells
 90% RPMI 1640 with L-glutamine and HEPES
 10% FBS
 200µg/ml hygromycin B

cell growth medium for CD47 CHO-K1 Target Cells
 90% Ham's F12
 10% FBS
 0.5mg/ml Geneticin

cell freezing medium for SIRPα Effector Cells
 85% RPMI 1640 with L-glutamine and HEPES
 10% FBS
 5% DMSO

cell freezing medium for CD47 CHO-K1 Target Cells
 85% Ham's F12
 10% FBS
 5% DMSO

assay buffer
 98% RPMI 1640 with L-glutamine and HEPES
 2% FBS

cell plating medium for CD47 CHO-K1 Target Cells
 90% Ham's F12
 10% FBS

9.C. Related Products

Fc Effector Bioassays

Product	Size	Cat.#
ADCC Reporter Bioassay, Complete Kit (Raji)*	1 each	G7015
ADCC Reporter Bioassay, Core Kit*	1 each	G7010
ADCC Reporter Bioassay, F Variant, Core Kit**	1 each	G9790
ADCC Reporter Bioassay, Target Kit (Raji)*	1 each	G7016
FcγRIIIa-H ADCP Reporter Bioassay, Complete Kit**	1 each	G9901
FcγRIIIa-H ADCP Reporter Bioassay, Core Kit**	1 each	G9991
Mouse FcγRIV ADCC Bioassay, Complete Kit	1 each	M1201
Mouse FcγRIV ADCC Bioassay, Core Kit	1 each	M1211
Membrane TNFα Target Cells**	1 each	J3331
Membrane RANKL Target Cells**	1 each	J3381

*For Research Use Only. Not for use in diagnostic procedures.

**Not for Medical Diagnostic Use.

Additional kit formats are available.

Fc Effector Immunoassay

Product	Size	Cat.#
Lumit™ FcRn Binding Immunoassay	100 assays	W1151

Not for Medical Diagnostic Use. Additional kit formats and sizes are available.

Immune Checkpoint Bioassays

Product	Size	Cat.#
4-1BB Bioassay	1 each	JA2351
CD28 Bioassay	1 each	JA6701
CD28 Blockade Bioassay	1 each	JA6101
CD40 Bioassay	1 each	JA2151
CTLA-4 Blockade Bioassay	1 each	JA3001
GITR Bioassay	1 each	JA2291
ICOS Bioassay, Core Kit	1 each	JA6801
ICOS Blockade Bioassay	1 each	JA6001
LAG-3/MHCII Blockade Bioassay	1 each	JA1111
OX40 Bioassay	1 each	JA2191
PD-1/PD-L1 Blockade Bioassay	1 each	J1250
PD-1+TIGIT Combination Bioassay	1 each	J2211
PD-L1 Negative Cells	1 each	J1191
TIGIT/CD155 Blockade Bioassay	1 each	J2201

Macrophage-Directed Bioassays

Product	Size	Cat.#
SIRPα/CD47 Blockade Bioassay	1 each	JA6011
SIRPα/CD47 Blockade Bioassay, Fc-Dependent	1 each	JA4801
TLR Bioassay	1 each	JA9011

Not for Medical Diagnostic Use. Additional kit formats and sizes are available.

9.C. Related Products (continued)

T Cell Activation Bioassays

Product	Size	Cat.#
T Cell Activation Bioassay (IL-2)	1 each	J1651
T Cell Activation Bioassay (NFAT)	1 each	J1621
T Cell Activation Bioassay (TCR $\alpha\beta$ -KO, CD4+)	1 each	GA1172
T Cell Activation Bioassay (TCR $\alpha\beta$ -KO, CD8+)	1 each	GA1162
T Cell Activation Bioassay (TCR $\alpha\beta$ -KO, CD4+, CD8+)	1 each	GA1182

Not for Medical Diagnostic Use. Additional kit formats are available.

Cytokine and Growth Factor Bioassays

Product	Size	Cat.#
IL-2 Bioassay	1 each	JA2201
IL-6 Bioassay	1 each	JA2501
IL-12 Bioassay	1 each	JA2601
IL-15 Bioassay	1 each	JA2011
IL-23 Bioassay	1 each	JA2511
RANKL Bioassay	1 each	JA2701
VEGF Bioassay	1 each	GA2001

Not for Medical Diagnostic Use. Additional kit formats are available.

Control Antibodies and Proteins

Product	Size	Cat.#
Control Ab, Anti-4-1BB	50 μ g	K1161
Control Ab, Anti-CD20	5 μ g	GA1130
Control Ab, Anti-CD40	50 μ g	K1181
Control Ab, Anti-CTLA-4	100 μ g	JA1020
Control Ab, Anti-LAG-3	100 μ g	K1150
Control Ab, Anti-OX40	50 μ g	K1191
Control Ab, Anti-PD-1	100 μ g	J1201
Control Ab, Anti-SIRP α	50 μ g	K1251
Control Ab, Anti-TIGIT	100 μ g	J2051
Control Ab, Anti-TIM-3	100 μ g	K1210
Recombinant VEGF ligand	10 μ g	J2371

Detection Reagents

Product	Size	Cat. #
Bio-Glo™ Luciferase Assay System	10ml	G7941
	100ml	G7940
Bio-Glo-NL™ Luciferase Assay System	10ml	J3081
	100ml	J3082
	1,000ml	J3083

Not for Medical Diagnostic Use.

Luminometers

Product	Size	Cat. #
GloMax® Navigator System	1 each	GM2000
GloMax® Discover System	1 each	GM3000
GloMax® Explorer System	1 each	GM3500

For Research Use Only. Not for use in diagnostic procedures.

Note: Additional Fc Effector, Immune Checkpoint, T Cell Activation and Cytokine Bioassays are available. To view and order Promega Bioassay products visit: www.promega.com/products/reporter-bioassays/ or visit Promega Tailored Solutions web site: www.promega.com/custom-solutions/tailored-solutions/ or e-mail: tailoredsolutions@promega.com



^(a)NOT FOR MEDICAL DIAGNOSTIC USE. FOR IN VITRO USE ONLY. BY USE OF THIS PRODUCT, RECIPIENT AGREES TO BE BOUND BY THE TERMS OF THIS LIMITED USE STATEMENT. If the recipient is not willing to accept the conditions of this limited use statement, and the product is unused, Promega will accept return of the unused product and provide the recipient with a full refund.

This product may not be further sold or transferred by the recipient and may be used only by the recipient, and then only for (1) research use; (2) discovery, development and monitoring of biologic drugs and vaccines; (3) quality assurance testing of biologic drugs and vaccines; and (4) product release assays for biologic drugs and vaccines. No other commercial use is allowed. "Commercial use" means any and all uses of this product by recipient for monetary or other consideration, including providing a service, information or data to unaffiliated third parties, and resale of this product for any use. Recipient has no right to modify, derivatize, genetically engineer or otherwise create variations of the cells or genes stably transfected within the cells except that recipient may propagate and store the cells for long-term use. In addition, recipient must use Bio-Glo-NL™ Luciferase Assay System purchased from Promega Corporation for all luminescence assays using this product or contact Promega to obtain a license for use of this product with reagents other than Promega's. PROMEGA MAKES NO REPRESENTATIONS OR WARRANTIES OF ANY KIND, EITHER EXPRESSED OR IMPLIED, INCLUDING AS TO MERCHANTABILITY OR FITNESS FOR A PARTICULAR PURPOSE WITH REGARDS TO THIS PRODUCT. The terms of this agreement shall be governed under the laws of the State of Wisconsin, USA.

^(b)U.S. Pat. Nos. 8,557,970, 8,669,103, 9,777,311, 9,840,730, 9,951,373, 10,633,690 and 10,844,422; European Pat. Nos. 2456864, 2635595, 3181687 and 3409764; Japanese Pat. Nos. 6038649, 6155424, 6227615 and 6374420; and other patents and patents pending.

^(c)Licensed from Lonza Cologne GmbH under U.S. Pat. Nos. 7,700,357, 8,192,990 and 8,003,389, European Pat. Nos. 1297119, 1522587, 1607484, 1741778 and 3409764 and other pending and issued patents.

^(d)Product cannot be used for proficiency testing.

© 2023 Promega Corporation. All Rights Reserved.

GloMax and NanoLuc are registered trademarks of Promega Corporation. Bio-Glo and Bio-Glo-NL are trademarks of Promega Corporation.

Accutase is a registered trademark of Innovative Cell Technologies. Corning and Costar are registered trademarks of Corning, Inc. Genetecin is a registered trademark of Life Technologies, Inc. GIBCO is a trademark of Thermo Fisher Scientific. GraphPad Prism is a registered trademark of GraphPad Software, Inc. JMP is a registered trademark of SAS Institute, Inc. Mr. Frosty is a registered trademark of Nalgene Nunc International Corporation. Styrofoam is a registered trademark of Dow Chemical Company.

Products may be covered by pending or issued patents or may have certain limitations. Please visit our Web site for more information.

All prices and specifications are subject to change without prior notice.

Product claims are subject to change. Please contact Promega Technical Services or access the Promega online catalog for the most up-to-date information on Promega products.