



TECHNICAL MANUAL

# T Cell Activation Bioassay (NFAT)

Instructions for Use of Products  
**J1621 and J1625**

# T Cell Activation Bioassay (NFAT)

All technical literature is available at: [www.promega.com/protocols/](http://www.promega.com/protocols/)  
 Visit the web site to verify that you are using the most current version of this Technical Manual.  
 E-mail Promega Technical Services if you have questions on use of this system: [techserv@promega.com](mailto:techserv@promega.com)

<b>1.</b>	Description .....	<b>1</b>
<b>2.</b>	Product Components and Storage Conditions .....	<b>9</b>
<b>3.</b>	Before You Begin .....	<b>10</b>
<b>3.A.</b>	Materials to Be Supplied by the User .....	<b>10</b>
<b>4.</b>	Assay Protocol .....	<b>11</b>
<b>4.A.</b>	Preparing Bio-Glo™ Reagent, Assay Buffer and Test and Reference Samples .....	<b>13</b>
<b>4.B.</b>	Plate Layout Design .....	<b>14</b>
<b>4.C.</b>	Preparing and Plating Target Cells .....	<b>14</b>
<b>4.D.</b>	Preparing and Adding Antibody Serial Dilutions .....	<b>16</b>
<b>4.E.</b>	Preparing and Plating TCR/CD3 Effector Cells (NFAT) .....	<b>17</b>
<b>4.F.</b>	Adding Bio-Glo™ Reagent .....	<b>18</b>
<b>4.G.</b>	Data Analysis .....	<b>18</b>
<b>5.</b>	Troubleshooting .....	<b>19</b>
<b>6.</b>	References .....	<b>20</b>
<b>7.</b>	Appendix .....	<b>20</b>
<b>7.A.</b>	Representative Assay Results .....	<b>20</b>
<b>7.B.</b>	Related Products .....	<b>21</b>
<b>8.</b>	Summary of Changes .....	<b>23</b>

## 1. Description

T cells play a central role in cell-mediated immunity and can mediate long-term, antigen-specific, effector and memory responses. In recent years, a variety of immunotherapy strategies aimed at inducing, strengthening and/or engineering T cell responses have emerged as promising approaches for the treatment of diseases such as cancer and autoimmunity (1).

T cell activation is initiated by engagement of the T cell antigen receptor (TCR)/CD3 complex and the co-stimulatory receptor CD28. Co-engagement of these receptors on the cell surface leads to intracellular signaling events and the activation of nuclear transcription factors such as Nuclear Factor of Activated T cells (NFAT), NF-κB and AP-1. Specifically, engagement of the TCR/CD3 complex leads to the phosphorylation and activation of PLC-γ, intracellular calcium flux and transcriptional activation of NFAT pathway. By contrast, co-engagement of TCR/CD3 with the

## 1. Description (continued)

co-stimulatory receptor CD28 leads to activation of ERK/JNK and I $\kappa$ B kinase (IKK), which in turn regulate transcriptional activation of AP-1 and NF- $\kappa$ B pathways, respectively (2). The IL-2 promoter contains DNA binding sites for NFAT, NF- $\kappa$ B and AP-1. Therefore, co-engagement of TCR/CD3 and CD28 results in IL-2 production, which is commonly used as a functional readout for T cell activation. Other endpoints used to measure T cell activation include cell proliferation and production of additional cytokines such as IFN $\gamma$ .

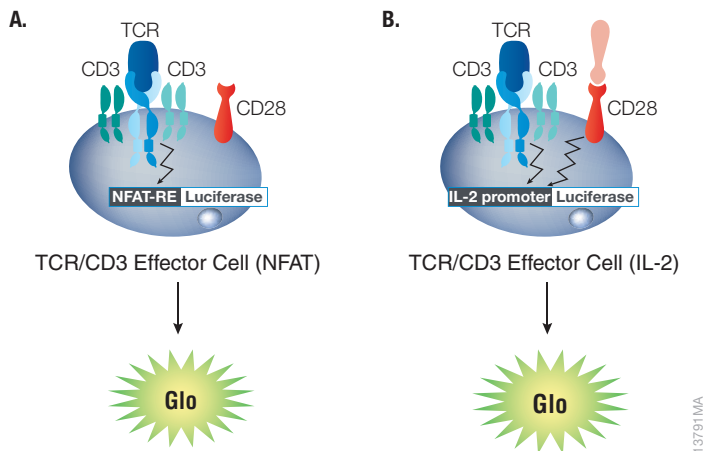
Current methods used to measure TCR-mediated T cell proliferation and cytokine production rely on primary peripheral blood mononuclear cells (PBMCs) as a source of T cells, which must be stimulated via co-culture with antigen presenting cells (APCs) or anti-TCR/CD3 antibodies. These assays are laborious and highly variable due to their reliance on donor primary cells, complex assay protocols and assay reagents not qualified for these protocols. As a result, these assays are difficult to establish in quality-controlled drug development settings.

The T Cell Activation Bioassay (NFAT)<sup>(a,b,c)</sup> (Cat.# J1621, J1625), is a bioluminescent cell-based assay that overcomes the limitations of existing assays and can be used for the discovery and development of novel biologic and cell therapies aimed at inducing, strengthening and/or engineering T cell responses. The assay consists of a genetically engineered Jurkat T cell line that expresses a luciferase reporter driven by an NFAT-response element (NFAT-RE). The TCR/CD3 Effector Cells (NFAT) are provided in a thaw-and-use format as cryopreserved cells that can be thawed, plated and used in an assay without the need for cell propagation (3)

**Note:** A second version of the T Cell Activation Bioassay that expresses a luciferase reporter driven by an IL-2 promoter is also available (see Related Products, Section 7.B). A schematic representation of the T Cell Activation Bioassays (NFAT or IL-2) is included in Figure 1 and data generated using TCR/CD3 Effector Cells (NFAT or IL-2) is included in Figure 2.

The TCR/CD3 Effector Cells express endogenous TCR, CD3 and CD28 receptors. When the TCR/CD3 Effector Cells (NFAT) are engaged with an appropriate TCR/CD3 ligand or anti-TCR/CD3 antibody, the TCR transduces intracellular signals resulting in NFAT-RE-mediated luminescence (Figure 1, Panel A). Similarly, when the TCR/CD3 Effector Cells (IL-2) are co-engaged with an anti-TCR/CD3 and an anti-CD28 stimulus, receptor-mediated signaling results in IL-2 promoter-mediated luminescence (Figure 1, Panel B). The bioluminescent signal is detected and quantified using Bio-Glo™ Luciferase Assay System (Cat.# G7940, G7941) and a standard luminometer, such as the GloMax® Discover System (see Related Products, Section 7.B).

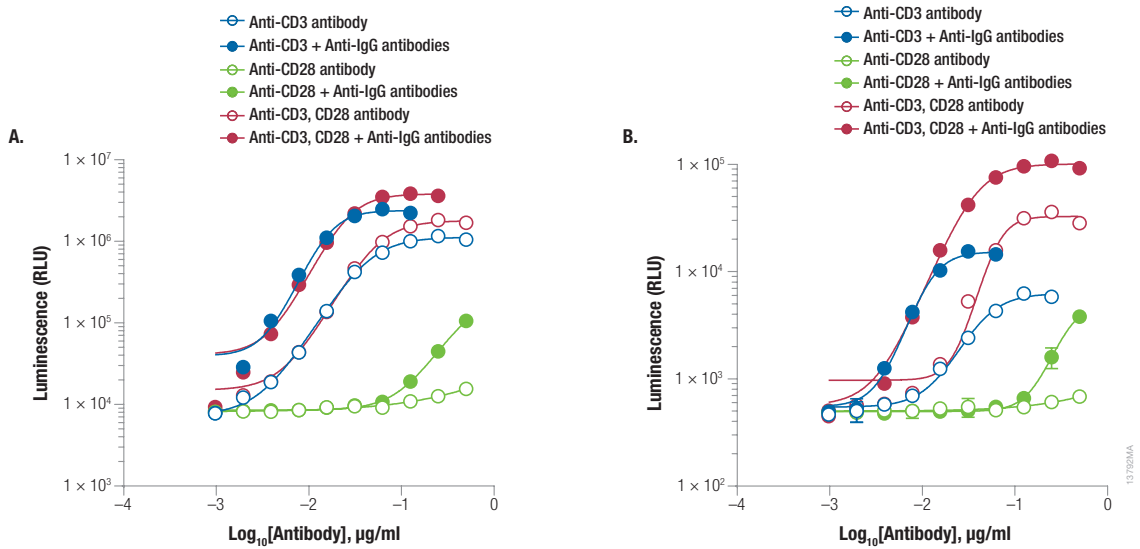
The T Cell Activation Bioassay reflects the mechanism of action (MOA) of biologics designed to engage the TCR and induce TCR-mediated T cell activation. Specifically, anti-CD3 antibody-mediated luminescence is detected using either the TCR/CD3 Effector Cells (NFAT) or the TCR/CD3 Effector Cells (IL-2), and the signal is enhanced following the addition of an anti-IgG crosslinking antibody (Figure 2). As expected, addition of an anti-CD28 co-stimulatory signal results in a further increase in luminescence using the TCR/CD3 Effector Cells (IL-2), but not the TCR/CD3 Effector Cells (NFAT). Importantly, TCR-mediated luminescence can also be detected in response to a TCR ligand presented in the context of an antigen presenting cell (Figure 3).



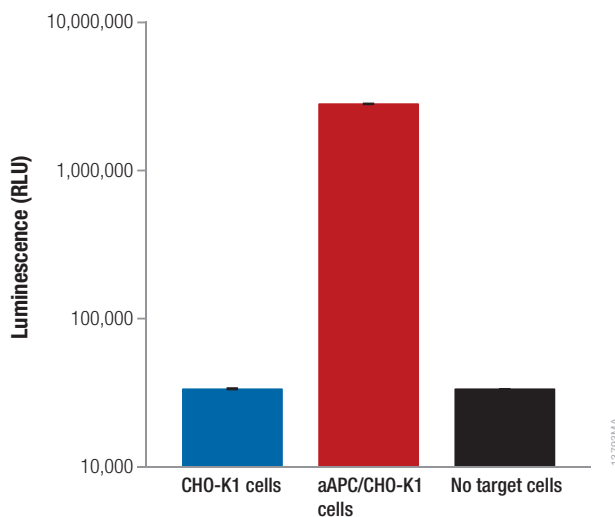
**Figure 1. Representation of the T Cell Activation Bioassay.** The T Cell Activation Bioassay (NFAT) and T Cell Activation Bioassay (IL-2) each consist of a genetically engineered cell line, TCR/CD3 Effector Cells (NFAT; **Panel A**) and TCR/CD3 Effector Cells (IL-2; **Panel B**), respectively. When engaged with either an anti-TCR/CD3 stimulus alone or an anti-TCR/CD3 and an anti-CD28 stimulus, receptor-mediated signaling induces luminescence (via activation of the NFAT or IL-2 pathway, respectively) that can be detected by addition of Bio-Glo™ Reagent and quantitation with a luminometer.

An important application of the T Cell Activation Bioassay is the discovery and development of bispecific antibodies designed to recruit effector T cells to eradicate tumor cells by simultaneously binding CD3 on the surface of T cells and tumor antigens expressed on tumor cells. Blinatumomab (trade name Blincyto™) is a bispecific antibody that simultaneously binds CD3 expressed on T cells and CD19 expressed on malignant B cells (4) (Figure 4, Panel A). Blinatumomab was the first bispecific antibody approved by the US Food and Drug Administration (FDA) for the treatment of acute B cell lymphoblastic leukemia. When incubated with Raji (CD19<sup>+</sup>) target cells and increasing concentrations of blinatumomab, the TCR/CD3 Effector Cells (NFAT) show a dose-dependent increase in luminescence (Figure 4, Panel B). Importantly, no response is detected in the absence of Raji (CD19<sup>+</sup>) target cells. The bioassay is prequalified according to ICH guidelines and shows the precision, accuracy and linearity required for routine use in potency and stability studies (Table 1 and Figure 5). In addition, the bioassay workflow is simple and robust, and compatible with both 96- and 384-well plate formats used for antibody screening in early drug discovery (Figure 6). Finally, the bioassay can be used in the presence of up to 33.3% human serum (final concentration) with an excellent assay window (Figure 7), indicating potential for further development into a neutralizing antibody bioassay.

## 1. Description (continued)



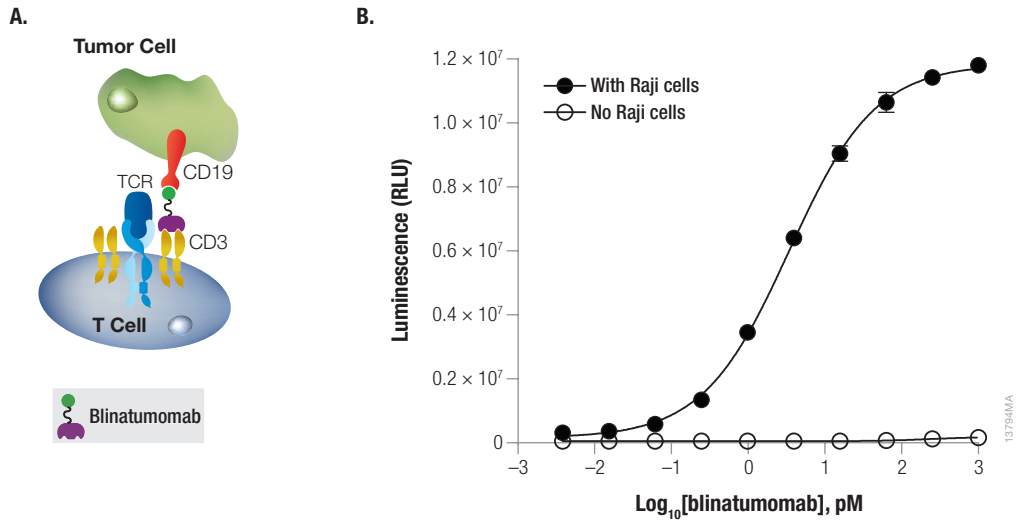
**Figure 2. The T Cell Activation Bioassay reflects the mechanism of action (MOA) of biologics designed to engage the TCR and induce TCR-mediated T cell activation.** TCR/CD3 Effector Cells (NFAT; Panel A) or TCR/CD3 Effector Cells (IL-2; Panel B) were incubated with anti-CD3, anti-CD28, or both antibodies followed by either no crosslinking or crosslinking with a goat anti-mouse IgG antibody, as indicated. Bio-Glo™ Reagent was added and luminescence was quantified using the GloMax® Multi+ Detection System. Data were fitted to a 4PL curve using GraphPad Prism® software. Data were generated using thaw-and-use cells.



**Figure 3. The T Cell Activation Bioassay recognizes TCR ligands presented in the context of an antigen presenting cell.**

TCR/CD3 Effector Cells (NFAT) were incubated for six hours alone (no target cells), with CHO-K1 cells lacking a TCR ligand, or with an artificial antigen presenting cell (aAPC) consisting of CHO-K1 cells expressing an engineered cell surface protein designed to activate cognate TCRs in an antigen-independent manner. Bio-Glo™ Reagent was added and luminescence was quantified using the GloMax® Multi+ Detection System. Data were analyzed using GraphPad Prism® software. Data were generated using thaw-and-use cells.

1. Description (continued)

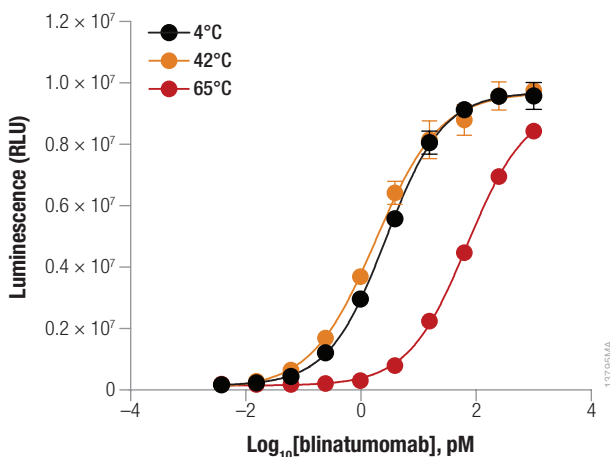


**Figure 4. The T Cell Activation Bioassay (NFAT) can be used to measure the activity and specificity of bispecific antibodies.** **Panel A.** Blnatumomab (trade name Blincyto™) is a bispecific antibody that simultaneously binds CD3 expressed on T cells and CD19 expressed on malignant B cells. **Panel B.** TCR/CD3 Effector Cells (NFAT) were incubated with increasing concentrations of blinatumomab in the absence or presence of Raji (CD19<sup>+</sup>) target cells. Bio-Glo™ Reagent was added and luminescence was quantified using the GloMax® Discover System. Data were fitted to a 4PL curve using GraphPad Prism® software. Data were generated using thaw-and-use cells.

**Table 1. The T Cell Activation Bioassay (NFAT) Shows Precision, Accuracy and Linearity.**

Parameter	Results	
Accuracy	% Expected Relative Potency	% Recovery
	50	95.7
	75	95.0
	150	89.6
	200	92.4
Repeatability (% CV)	100% (Reference)	3.0
Intermediate Precision (% CV)		9.2
Linearity ( $r^2$ )		0.995
Linearity ( $y = mx + b$ )		$y = 0.8934x + 4.9232$

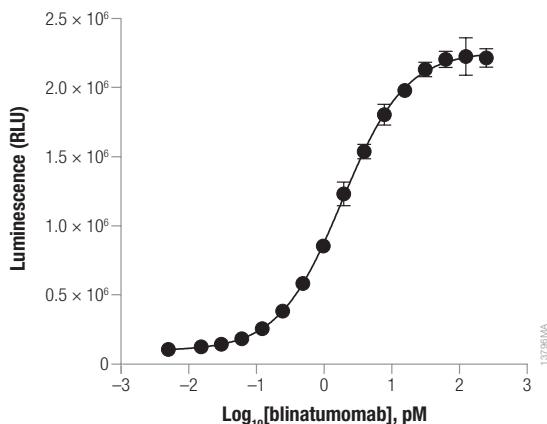
A 50–200% theoretical potency series of blinatumomab (anti-CD3 and anti-CD19 bispecific antibody) was analyzed in triplicate in three independent experiments performed on three days by two analysts. Bio-Glo™ Reagent was added and luminescence quantified using the GloMax® Discover System. Data were analyzed and relative potencies calculated after parallelism determination using JMP® software. Data were generated using thaw-and-use cells.



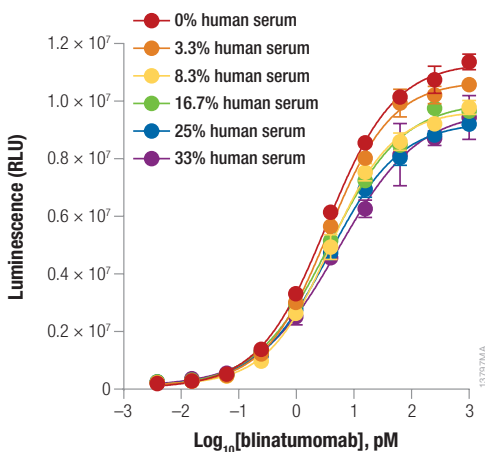
**Figure 5. The T Cell Activation Bioassay (NFAT) indicates stability.** Samples of blinatumomab were maintained at 4°C (control) or heat-treated (42°C or 65°C) for 1 hour, then analyzed using the T Cell Activation Bioassay (NFAT) and Raji (CD19<sup>+</sup>) target cells. Bio-Glo™ Reagent was added and luminescence was quantified using the GloMax® Multi+ Detection System. Data were fitted to a 4PL curve using GraphPad Prism® software. Data were generated using thaw-and-use cells.



1. Description (continued)



**Figure 6. The assay is amenable to 384-well plate format and compatible with laboratory automation.** Blinatumomab was tested in the T Cell Activation Bioassay (NFAT) Raji (CD19<sup>+</sup>) target cells using a Multidrop™ Combi nL (Thermo Scientific) dispenser. Bio-Glo™ Reagent was added and luminescence was quantified using the GloMax® Discover System. Data were fitted to a 4PL curve using GraphPad Prism® software. Data were generated using thaw-and-use cells.



**Figure 7. The T Cell Activation Bioassay (NFAT) tolerates human serum.** Blinatumomab was tested in the T Cell Activation Bioassay (NFAT) with Raji (CD19<sup>+</sup>) target cells in the absence or presence of increasing concentrations of pooled normal human serum (0–100% in the antibody sample), resulting in final assay concentration of human serum (0–33.3%). Bio-Glo™ Reagent was added and luminescence was quantified using the GloMax® Multi+ Detection System. Data were fitted to a 4PL curve using GraphPad Prism® software. Data were generated using thaw-and-use cells.

## 2. Product Components and Storage Conditions

PRODUCT	SIZE	CAT. #
<b>T Cell Activation Bioassay (NFAT)</b>	<b>1 each</b>	<b>J1621</b>

Not for Medical Diagnostic Use. Each kit contains sufficient reagents for 120 assays using the inner 60 wells of two 96-well plates. Includes:

- 1 vial TCR/CD3 Effector Cells (NFAT) (0.8ml per vial)
- 36ml RPMI 1640 Medium
- 4ml Fetal Bovine Serum
- 1 vial Bio-Glo™ Luciferase Assay Substrate (lyophilized)
- 10ml Bio-Glo™ Luciferase Assay Buffer

PRODUCT	SIZE	CAT. #
<b>T Cell Activation Bioassay (NFAT) 5X</b>	<b>5 each</b>	<b>J1625</b>

Not for Medical Diagnostic Use. Each kit contains sufficient reagents for 600 assays using the inner 60 wells of ten 96-well plates. Includes:

- 5 vials TCR/CD3 Effector Cells (NFAT) (0.8ml per vial)
- 5 × 36ml RPMI 1640 Medium
- 5 × 4ml Fetal Bovine Serum
- 5 vials Bio-Glo™ Luciferase Assay Substrate (lyophilized)
- 5 × 10ml Bio-Glo™ Luciferase Assay Buffer

**Note:** T Cell Activation Bioassay (NFAT) components are shipped separately because of differing temperature requirements. The TCR/CD3 Effector Cells are shipped on dry ice. The Bio-Glo™ Luciferase Assay System and Fetal Bovine Serum are shipped on dry ice, separately from the cells. The RPMI 1640 Medium is shipped at ambient temperature.

### Storage Conditions:

- Upon arrival, immediately transfer the cell vials to below  $-140^{\circ}\text{C}$  (freezer or liquid nitrogen vapor phase) for long-term storage. Do **not** store cell vials submerged in liquid nitrogen. Do **not** store cell vials at  $-80^{\circ}\text{C}$  as this will decrease cell viability and cell performance.
- Store Bio-Glo™ Luciferase Assay Substrate, Bio-Glo™ Luciferase Assay Buffer and Fetal Bovine Serum at  $-30^{\circ}\text{C}$  to  $-10^{\circ}\text{C}$ . Avoid multiple freeze-thaw cycles of the serum.
- For optimal performance, use reconstituted Bio-Glo™ Reagent on the day of preparation. However, once reconstituted, Bio-Glo™ Reagent can be stored at  $-30^{\circ}\text{C}$  to  $-10^{\circ}\text{C}$ . for up to 6 weeks.
- Store RPMI 1640 Medium at  $+2^{\circ}\text{C}$  to  $+10^{\circ}\text{C}$  protected from fluorescent light.

### **3. Before You Begin**

Please read through the entire protocol to become familiar with the components and the assay procedure before beginning.

The TCR/CD3 Effector Cells are provided in frozen, thaw-and-use format and are ready to be used without any additional cell culture or propagation. When thawed and diluted as instructed, the cells will be at the appropriate concentration for the assay. The cells are sensitive; carefully follow cell thawing and plating procedures exactly as described. Do not overmix or overwarm the cell reagents.

The T Cell Activation Bioassay (NFAT) is intended to be used with user-provided antibodies or other biologics designed to activate the CD3/TCR complex. The recommended cell plating density, induction time and assay buffer components described in Section 4 were established using a research-grade anti-CD3 antibody and blinatumomab (anti-CD3 and anti-CD19 bispecific antibody). You may need to adjust the parameters provided here and optimize assay conditions for your own antibodies or other biologic samples. Data generated using these reagents is shown in Sections 1 and 7.A.

The T Cell Activation Bioassay (NFAT) produces a bioluminescent signal and requires a sensitive luminometer or luminescence plate reader for the detection of luminescence. Bioassay development and performance data included in this Technical Manual were generated using the GloMax<sup>®</sup> Discover System and GloMax<sup>®</sup> Multi+ Detection System (see Related Products, Section 7.C). An integration time of 0.5 second/well was used for all readings. The bioassay is compatible with most other plate-reading luminometers; however, relative luminescence unit readings may vary due to the sensitivity and settings of each instrument. The use of different instruments should not affect the measured relative potency of test samples.

#### **3.A. Materials to Be Supplied by the User**

##### **Reagents**

- user-defined anti-CD3/TCR antibodies or other biologics samples
- user-defined target cells

##### **Supplies and Equipment**

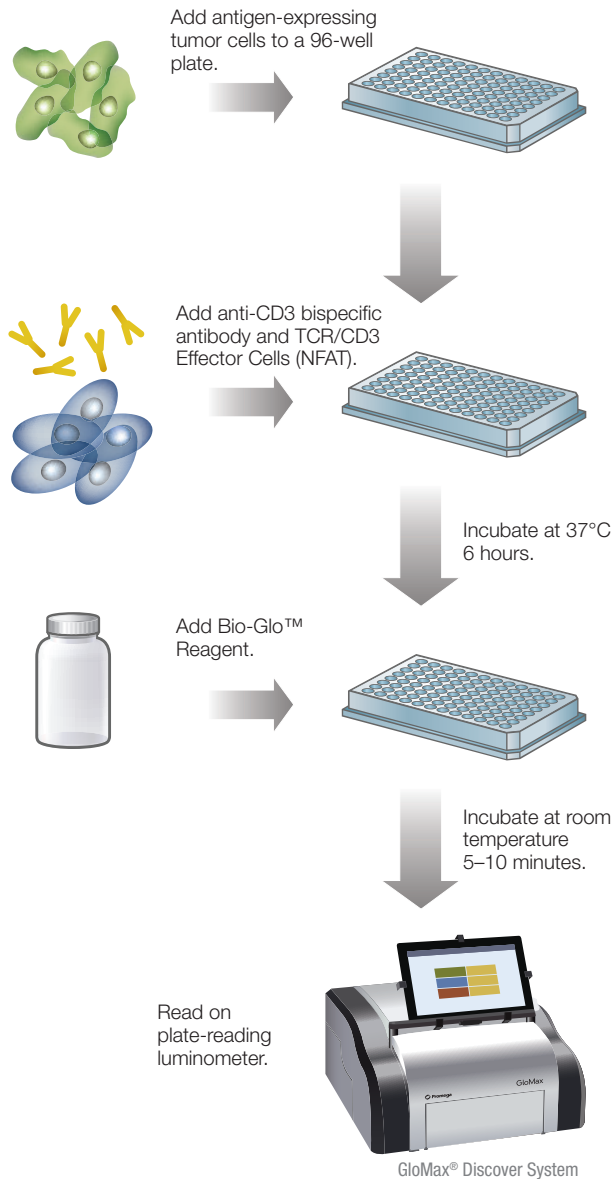
- white, flat-bottom 96-well assay plates (e.g., Corning Cat.# 3917)
- sterile clear 96-well plate with lid (e.g., Linbro Cat.# 76-223-05) for preparing antibody dilutions
- pipettes (single-channel and 12-channel)
- sterile 15ml and 50ml conical tubes
- sterile reagent reservoirs (e.g., Corning Cat.# 4870)
- 37°C, 5% CO<sub>2</sub> incubator
- 37°C water bath
- plate reader that measures glow luminescence or luminometer (e.g., GloMax<sup>®</sup> Discover System)

#### **4. Assay Protocol**

This assay protocol illustrates the use of the T Cell Activation Bioassay (NFAT) to test blinatumomab (anti-CD3 and anti-CD19 bispecific antibody) in the presence of Raji (CD19<sup>+</sup>) target cells, with two test antibody samples against a reference sample in a single assay run. Each test and reference antibody is run in triplicate, in a ten-point dilution series, in a single 96-well assay plate using the inner 60 wells. Other experimental and plate layouts are possible but may require further optimization.

##### **Notes:**

- a. When preparing test and reference antibodies, choose an appropriate starting concentration and dilution scheme to achieve a full dose-response curve with proper upper and lower asymptotes and sufficient points on the slope. For reference, we use 1nM as a starting concentration (1X) and fourfold serial dilutions when testing blinatumomab to achieve full dose curves.
- b. For testing blinatumomab, we use Raji (CD19<sup>+</sup>) target cells. For other bispecific or multivalent biologics, choose an antigen-expressing target cell relevant to your system. You may need to optimize the E:T (effector cell:target cell) ratio, cell densities, antibody dilution scheme, assay duration and any other assay conditions relevant to your system.
- c. To minimize assay setup time, prepare antibody serial dilutions prior to thawing and plating cells.



**Figure 8. Schematic protocol for the T Cell Activation Bioassay (NFAT) to measure the activity of anti-CD3 bispecific antibody in the presence of antigen-expressing tumor cells.**

#### 4.A. Preparing Bio-Glo™ Reagent, Assay Buffer and Test and Reference Samples

- Bio-Glo™ Reagent:** For reference, 10ml of Bio-Glo™ Reagent is sufficient to assay 120 wells in a 96-well assay format. Thaw the Bio-Glo™ Luciferase Assay Buffer in a refrigerator overnight or in a room temperature water bath on the day of assay. Equilibrate the Bio-Glo™ Luciferase Assay Buffer to ambient temperature, protected from light. Transfer all of the Bio-Glo™ Luciferase Assay Buffer into the amber bottle containing the Bio-Glo™ Luciferase Assay Substrate and mix by inversion until the Substrate is thoroughly dissolved. Equilibrate and store the reconstituted Bio-Glo™ Reagent at ambient temperature (22–25°C) protected from light before adding to assay plates.
- Assay Buffer:** Prepare an appropriate amount of assay buffer on the day of the assay. Thaw the fetal bovine serum (FBS) in a 37°C water bath taking care not to overheat it. Add 4ml of FBS to 36ml of RPMI 1640 medium to yield 90% RPMI 1640/10% FBS. Mix well and warm to 37°C prior to use. For reference, 40ml of assay buffer is typically sufficient for 120 wells in a 96-well assay format using the inner 60 wells.  
**Note:** The recommended assay buffer contains 10% FBS. This concentration of FBS works well for all of the anti-CD3 antibodies we have tested. If you experience assay performance issues when using this assay buffer, we recommend testing serum concentrations in the range of 0.5–10%.
- Test and Reference Samples:** Prepare starting dilutions (dilu1, 3X final concentration) of test and reference antibodies. Using assay buffer as the diluent, prepare 300µl of reference antibody starting dilution and 150µl of each test antibody starting dilution in 1.5ml tubes. Store the tubes containing antibody starting dilutions appropriately before making antibody serial dilutions.

#### 4.B. Plate Layout Design

For the protocol described here, use the plate layout illustrated in Figure 9 as a guide. The protocol describes serial replicate dilutions (n = 3) of test and reference antibodies to generate two 10-point dose-response curves for each plate.

Recommended Plate Layout Design													
	1	2	3	4	5	6	7	8	9	10	11	12	
A	B	B	B	B	B	B	B	B	B	B	B	B	Assay Buffer (B)
B	B	no Ab	dilu9	dilu8	dilu7	dilu6	dilu5	dilu4	dilu3	dilu2	dilu1	B	Reference Ab
C	B	no Ab	dilu9	dilu8	dilu7	dilu6	dilu5	dilu4	dilu3	dilu2	dilu1	B	Test Ab
D	B	no Ab	dilu9	dilu8	dilu7	dilu6	dilu5	dilu4	dilu3	dilu2	dilu1	B	Test Ab
E	B	no Ab	dilu9	dilu8	dilu7	dilu6	dilu5	dilu4	dilu3	dilu2	dilu1	B	Reference Ab
F	B	no Ab	dilu9	dilu8	dilu7	dilu6	dilu5	dilu4	dilu3	dilu2	dilu1	B	Reference Ab
G	B	no Ab	dilu9	dilu8	dilu7	dilu6	dilu5	dilu4	dilu3	dilu2	dilu1	B	Test Ab
H	B	B	B	B	B	B	B	B	B	B	B	B	Assay Buffer (B)

**Figure 9. Example plate layout showing non-clustered sample locations of test and reference antibody dilution series and wells containing assay buffer (denoted by “B”) alone.**

#### 4.C. Preparing and Plating Target Cells

To prepare the target cells for testing anti-CD3 bispecific antibody with the T Cell Activation Bioassay (NFAT), the target cells need to be cultured using standard practices to maintain viability of cells and density in a satisfactory range for good performance in a conventional T cell activation assay. Both suspension target cells and adherent target cells grown in continuous culture have been tested in the T Cell Activation Bioassay (NFAT) and demonstrated good results. While maintaining target cells, follow the recommended cell seeding density because changes in cell culture volume or seeding density will affect cell growth rate and assay performance. Only use the cells in an assay after the cell doubling rate has stabilized during propagation.

### Preparing Suspension Target Cell Lines from Continuous Culture

1. Passage the cells two days before performing the assay using the cell growth medium recommended for your specific target cell. As a reference, to ensure optimal and consistent assay performance of Raji (CD19<sup>+</sup>) target cells tested with blinatumomab, maintain the cell density, upon harvest, in the range of  $1.0\text{--}1.6 \times 10^6$  cells/ml and cell viability at greater than 95%.
2. On the day of assay, prepare an appropriate amount of assay buffer as described in Section 4.B.
3. Estimate the required target cell number needed for assay. Harvest and count the target cells by Trypan blue staining, and calculate the cell density and viability. Harvest at least twice the cell number needed for the assay.
4. Transfer an appropriate amount of target cells from the culture vessel to a 50ml conical tube or larger sized centrifuge tube.
5. Pellet the cells at  $130\text{--}180 \times g$  for 10 minutes at ambient temperature.
6. Resuspend the cells to a final cell density suitable for your assay to ensure that there is an appropriate cell number per well when you dispense 25 $\mu$ l to each well. To prepare Raji (CD19<sup>+</sup>) target cells to test with blinatumomab, you will need at least 4ml of cell suspension at  $8 \times 10^5$  cells/ml to fill 120 assay wells, or the inner 60 wells of two assay plates, and includes extra volume for accurate pipetting.
7. Transfer the cell suspension to a sterile reagent reservoir.
8. Using a multichannel pipette, immediately dispense 25 $\mu$ l of the cell suspension to each of the inner 60 wells of 96-well flat, white-bottom assay plates.
9. Dispense 75 $\mu$ l of assay buffer into the outermost wells, labeled "B" in Figure 9, of both assay plates.
10. Cover the assay plates with a lid and proceed to Section 4.D.

### Preparing Adherent Target Cell Lines from Continuous Culture



Follow the steps below using aseptic technique in a sterile cell culture hood if performing an overnight assay.

1. Passage cells 2–3 days before performing the assay using the cell growth medium recommended for your specific adherent target cell. To ensure optimal and consistent assay performance, maintain the cell density, upon harvest, below 100% confluency and cell viability at greater than 95%.
2. The day before the T Cell Activation Bioassay, estimate the required target cell number needed. Harvest target cells using trypsin (or other standard procedure), count cells by Trypan blue staining, and calculate the cell density and viability. Harvest at least twice the cell number needed for the assay.
3. Transfer an appropriate amount of the cells from the culture vessel to a 50ml conical tube or larger sized centrifuge tube.
4. Pellet the cells at  $180\text{--}200 \times g$  for 10 minutes at ambient temperature.
5. Resuspend the cells in compatible complete culture medium to a final cell density suitable for your assay to ensure that there is an appropriate cell number per well when you dispense 100 $\mu$ l to each well. As reference, we used cells at a density of  $4 \times 10^5$  cells/ml, and prepared 15ml of cell suspension (including extra volume for accurate pipetting) to fill 120 assay wells, or the inner 60 wells of two assay plates.



#### 4.C. Preparing and Plating Target Cells (continued)

##### Preparing Adherent Target Cell Lines from Continuous Culture (continued)

6. Transfer the resuspended cells to a sterile reagent reservoir.
7. Immediately dispense 100µl of the cell suspension to each of the inner 60 wells of 96-well flat, white-bottom assay plates using a multichannel pipette. The final cell concentration in each well should be around  $4 \times 10^4$  cells/well, and will vary depending on cell size. Target cells should be attached and 90–100% confluent at the start of the assay.
8. Dispense 100µl of complete culture medium into the outermost wells, labeled “B” in Figure 9, of both assay plates.
9. Cover the plates with lids and incubate in a humid 37°C, 5% CO<sub>2</sub> incubator for 20–24 hours.
10. On the morning of the T Cell Activation Bioassay, prepare an appropriate amount of assay buffer as described in Section 4.A.
11. Remove all of the culture medium from each of the wells using a multichannel pipette. Alternatively, flick medium from plates into a sink and blot plate dry on paper towels. If performing an overnight assay, do not use the alternate flick-and-blot method (see Section 4.E, Step 7).
12. Immediately dispense 25µl of Assay Buffer (prewarmed to 37°C) to each of the inner 60-wells of the assay plates using a multichannel pipette. Gently add medium by touching pipette tips to the walls of the wells to minimize disruption of the target cells.
13. Dispense 75µl of prewarmed assay buffer into the outermost wells, labeled “B” in Figure 9, of both assay plates.
14. Cover the plates with lids and proceed to Section 4.D.

#### 4.D. Preparing and Adding Antibody Serial Dilutions

The instructions described here are for preparation of a single stock of fourfold serial dilutions of a single antibody for analysis in triplicate (100µl of each dilution provides a sufficient volume for analysis in triplicate). Alternatively, you can prepare three independent stocks of serial dilutions to generate triplicate samples. To prepare fourfold serial dilutions, you will need 300µl of reference antibody at 3X the highest antibody concentration in your dose-response curve. You will need 150µl of each test antibody at 3X the highest antibody concentration in each of the test antibody dose-response curves. For other dilution schemes, adjust the volumes accordingly.

1. To a sterile clear 96-well plate, add 150µl of reference antibody starting dilution (dilu1, 3X final concentration) to wells A11 and B11. (See Figure 10.)
3. Add 150µl of test antibodies 1 and 2 starting dilution (dilu1, 3X final concentration) to wells E11 and G11, respectively.
4. Add 150µl of assay buffer to other wells in these four rows, from column 10 to column 2.
5. Transfer 50µl of the antibody starting dilutions from column 11 into column 10. Mix well by pipetting. Avoid creating bubbles.
6. Repeat equivalent fourfold serial dilutions across the columns from right to left until you reach column 3. Do not dilute into column 2.



**Note:** Wells A2, B2, E2 and G2 contain 150µl of assay buffer without antibody as a negative control.

7. Using an multichannel pipette, dispense 25µl of the antibody dilutions to the preplated target cells according to the plate layout in Figure 9.
8. Cover each assay plate with a lid and proceed to Section 4.F.

**Recommended Plate Layout for Antibody Dilutions Prepared from a Single Antibody Stock**

	1	2	3	4	5	6	7	8	9	10	11	12	
A		no Ab	dilu9	dilu8	dilu7	dilu6	dilu5	dilu4	dilu3	dilu2	dilu1		Reference Ab
B		no Ab	dilu9	dilu8	dilu7	dilu6	dilu5	dilu4	dilu3	dilu2	dilu1		Reference Ab
C													
D													
E		no Ab	dilu9	dilu8	dilu7	dilu6	dilu5	dilu4	dilu3	dilu2	dilu1		Test Ab 1
F													
G		no Ab	dilu9	dilu8	dilu7	dilu6	dilu5	dilu4	dilu3	dilu2	dilu1		Test Ab 2
H													

**Figure 10. Example plate layout showing antibody serial dilutions.**

**4.E. Preparing and Plating TCR/CD3 Effector Cells (NFAT)**

The thaw-and-use TCR/CD3 Effector Cells (NFAT) included in this kit are sensitive; carefully follow the cell thawing and plating procedures **exactly** as described. Do not overmix or overwarm the cell reagents. No additional cell culture or manipulation is required. We recommend that you thaw and dilute a maximum of two vials of thaw-and-use cells at a time.



Follow the steps below using aseptic technique in a sterile cell culture hood if performing an overnight assay.

1. Remove one vial of TCR/CD3 Effector Cells (NFAT) from storage at -140°C and transfer to the bench on dry ice.
2. Add 3.2ml of prewarmed (37°C) assay buffer to a 15ml conical tube.
3. Warm the cells in a 37°C water bath until just thawed (about 2–3 minutes). While thawing, gently agitate and visually inspect. **Do not invert.**
4. Gently mix the cell suspension by pipetting, then transfer 0.8ml of the cells to the 15ml conical tube containing 3.2ml of assay buffer. Mix well by gently pipetting or inverting 1–2 times.

#### 4.E. Preparing and Plating TCR/CD3 Effector Cells (NFAT; continued)

5. Transfer the cell suspension to a sterile reagent reservoir.
6. Using a multichannel pipette, immediately dispense 25 $\mu$ l of the cell suspension to each of the inner 60 wells of 96-well flat, white-bottom assay plates. The final cell concentration in each well should be  $1.0 \times 10^5$  cells/well, and final assay volume 75 $\mu$ l.
7. Cover each assay plates with a lid, and incubate in a humid 37°C, 5% CO<sub>2</sub> incubator for 6 hours.

**Note:** The 6 hour assay time was optimized using Raji (CD19<sup>+</sup>) target cells and blinatumomab bispecific antibody. We recommend optimizing assay time (3–24 hours) with your target cells and antibody.

#### 4.F. Adding Bio-Glo™ Reagent

**Note:** Bio-Glo™ Reagent should be at ambient temperature (22–25°C) when added to assay plates.

1. Remove the assay plates from the incubator and equilibrate to ambient temperature for 10–15 minutes.
2. Using a manual multichannel pipette, add 75 $\mu$ l of Bio-Glo™ Reagent to the inner 60 wells of the assay plates, taking care not to create bubbles.
3. Add 75 $\mu$ l of Bio-Glo™ Reagent to wells B1, C1 and D1 of each assay plate to measure the background signal.
4. Incubate at ambient temperature for 5–10 minutes.



**Note:** Varying the incubation time will affect the raw RLU values but should not significantly change the EC<sub>50</sub> value and fold induction.

5. Measure luminescence using a luminometer or luminescence plate reader.

#### 4.G. Data Analysis

1. Measure plate background by calculating the average relative light units (RLU) from wells B1, C1 and D1.
2. Calculate fold induction = RLU (induced–background)/RLU (no antibody control–background).



**Note:** When calculating fold induction, if sample RLUs are the same as or up to 100X the plate background RLU, there is no need to subtract plate background from sample RLU.

3. Graph data as RLU versus Log<sub>10</sub> [antibody] and fold induction versus Log<sub>10</sub> [antibody]. Fit curves and determine the EC<sub>50</sub> value of antibody response using appropriate curve fitting software (such as GraphPad Prism® software).

## 5. Troubleshooting

For questions not addressed here, please contact your local Promega Branch Office or Distributor. Contact information available at: [www.promega.com](http://www.promega.com). E-mail: [techserv@promega.com](mailto:techserv@promega.com)

<b>Symptoms</b>	<b>Possible Causes and Comments</b>
Assay performance is variable	If the target cells were not grown under controlled and consistent conditions, assay performance will vary. Follow the cell culture guidelines and ensure accurate and consistent cell seeding density and culture volume. Monitor cell doubling rate for consistency.
Low luminescence measurements (RLU readout)	<p>Choose an instrument designed for plate-reading luminescence detection. Instruments designed primarily for fluorescence detection are not recommended. Luminometers measure and report luminescence as relative values, and actual RLU numbers will vary between instruments.</p> <p>Insufficient cells per well can lead to low RLU. Handle and plate the cells according to the instructions to ensure a sufficient number of viable cells per well.</p> <p>Low activity of Bio-Glo™ Reagent leads to low RLU. Store and handle the Bio-Glo™ Reagent according to the instructions.</p>
Weak assay response (low fold induction)	<p>Optimize the concentration range of your test sample(s) to achieve a full dose response with complete upper and lower asymptotes. The EC<sub>50</sub> value obtained in the T Cell Activation Bioassay (NFAT) may vary from the EC<sub>50</sub> obtained using other methods such as primary T cell-based assays.</p> <p>Optimize the assay incubation time within a range of 3–24 hours.</p> <p>If untreated control RLU is less than tenfold above plate reader background RLU, subtract plate reader background RLU from all samples prior to calculating fold induction.</p>

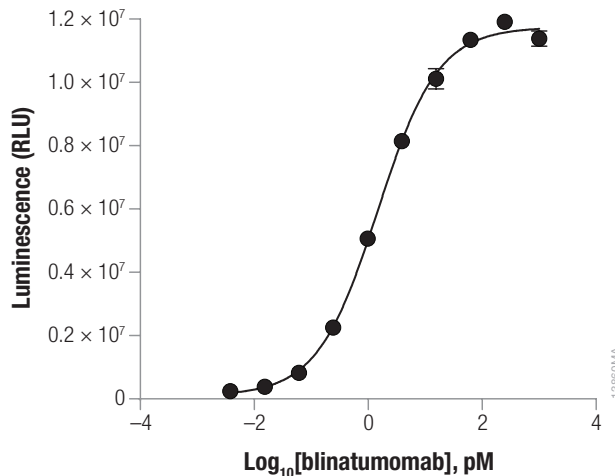
## 6. References

1. Hout, R. *et al.* (2015) T-cell-based immunotherapy: Adoptive cell transfer and checkpoint inhibition. *Cancer Immunol. Res.* **3**, 1115–22.
2. Fathman, C.G. and Lineberry, N.B. (2007) Molecular mechanisms of CD4+ T-cell anergy. *Nat. Rev. Immunol.* **7**, 599–609.
3. Stecha, P *et al.* (2015) Development of a robust reporter-based T-cell activation assay for bispecific therapeutic antibodies in immunotherapy. *American Association of Cancer Research (AACR) Annual Meeting*, Poster #5439
4. Löffler, A *et al.* (2000) A recombinant bispecific single-chain antibody, CD19 × CD3, induces rapid and high lymphoma-directed cytotoxicity by unstimulated T lymphocytes. *Blood* **95**, 2098–103.

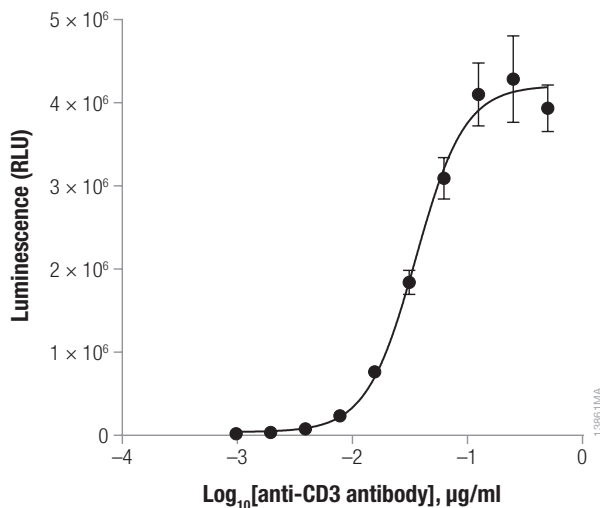
## 7. Appendix

### 7.A. Representative Assay Results

The following data were generated with the T Cell Activation Bioassay (NFAT) thaw-and-use cells, using blinatumomab (anti-CD3 and anti-CD19 bispecific antibody; Figure 11) or a research grade anti-CD3 antibody (Figure 12).



**Figure 11. The T Cell Activation Bioassay (NFAT) measures the potency of bispecific antibodies.** TCR/CD3 Effector Cells (NFAT) were incubated with increasing concentrations of blinatumomab (anti-CD3 and anti-CD19 bispecific antibody) and Raji (CD19<sup>+</sup>) target cells. Bio-Glo™ Reagent was added and luminescence was quantified using the GloMax® Multi+ Detection System. Data were analyzed using GraphPad Prism® software.



**Figure 12. The T Cell Activation (NFAT) Bioassay measures the potency of anti-CD3 antibody.** Anti-CD3 antibody crosslinked with anti-IgG antibody was tested in the T Cell Activation Bioassay (NFAT). After incubating for 6 hours, Bio-Glo™ Reagent was added and luminescence measured using the GloMax® Multi+ Detection System. Data were fitted to a 4PL curve using GraphPad Prism® software.

## 7.B. Related Products

### Fc Effector Bioassays

Product	Size	Cat.#
ADCC Reporter Bioassay, Complete Kit (Raji)*	1 each	G7015
ADCC Reporter Bioassay, Core Kit*	1 each	G7010
ADCC Reporter Bioassay, F Variant, Core Kit**	1 each	G9790
ADCC Reporter Bioassay, Target Kit (Raji)*	1 each	G7016
FcγRIIa-H ADCP Reporter Bioassay, Complete Kit**	1 each	G9901
FcγRIIa-H ADCP Reporter Bioassay, Core Kit**	1 each	G9991
Mouse FcγRIV ADCC Bioassay, Complete Kit	1 each	M1201
Mouse FcγRIV ADCC Bioassay, Core Kit	1 each	M1211
Membrane VEGF Target Cells	1 each	J3351
Membrane RANKL Target Cells	1 each	J3381

\*For Research Use Only. Not for use in diagnostic procedures.

\*\*Not for Medical Diagnostic Use. Additional kit formats are available.

## 7.B. Related Products (continued)

### Fc Effector Immunoassay

Product	Size	Cat.#
Lumit™ FcRn Binding Immunoassay	100 assays	W1151

Not for Medical Diagnostic Use. Additional kit formats and sizes are available.

### Immune Checkpoint Bioassays

Product	Size	Cat.#
4-1BB Bioassay	1 each	JA2351
CD28 Bioassay	1 each	JA6701
CD28 Blockade Bioassay	1 each	JA6101
CD40 Bioassay	1 each	JA2151
CTLA-4 Blockade Bioassay	1 each	JA3001
GITR Bioassay	1 each	JA2291
ICOS Bioassay	1 each	JA6801
ICOS Blockade Bioassay	1 each	JA6001
LAG-3/MHCII Blockade Bioassay	1 each	JA1111
OX40 Bioassay	1 each	JA2191
PD-1/PD-L1 Blockade Bioassay	1 each	J1250
PD-1+TIGIT Combination Bioassay	1 each	J2211
PD-L1 Negative Cells	1 each	J1191
TIGIT/CD155 Blockade Bioassay	1 each	J2201

Not for Medical Diagnostic Use. Additional kit formats are available.

### T Cell Activation Bioassays

Product	Size	Cat.#
T Cell Activation Bioassay (IL-2)	1 each	J1651

Not for Medical Diagnostic Use. Additional kit formats are available.

### Cytokine and Growth Factor Bioassays

Product	Size	Cat.#
IL-2 Bioassay	1 each	JA2201
IL-6 Bioassay	1 each	JA2501
IL-12 Bioassay	1 each	JA2601
IL-15 Bioassay	1 each	JA2011
IL-23 Bioassay	1 each	JA2511
RANKL Bioassay	1 each	JA2701
VEGF Bioassay	1 each	GA2001

Not for Medical Diagnostic Use. Additional kit formats are available.

### Control Antibodies and Proteins

Product	Size	Cat.#
Control Ab, Anti-4-1BB	50µg	K1161
Control Ab, Anti-CD20	5µg	GA1130
Control Ab, Anti-OX40	50µg	K1191
Control Ab, Anti-CD40	50µg	K1181
Control Ab, Anti-CTLA-4	100µg	JA1020
Control Ab, Anti-LAG-3	100µg	K1150
Control Ab, Anti-PD-1	100µg	J1201
Control Ab, Anti-TIGIT	100µg	J2051
Control Ab, Anti-TIM-3	100µg	K1210
Recombinant VEGF Ligand	10µg	J2371

### Detection Reagent

Product	Size	Cat.#
Bio-Glo™ Luciferase Assay System	10ml	G7941
	100ml	G7940
Bio-Glo-NL™ Luciferase Assay System	10ml	J3081
	100ml	J3082
	1,000ml	J3083

Not for Medical Diagnostic Use.



## 7.B. Related Products (continued)

### Luminometers

<b>Product</b>	<b>Size</b>	<b>Cat. #</b>
GloMax® Navigator System	1 each	GM2000
GloMax® Discover System	1 each	GM3000
GloMax® Explorer System	1 each	GM3500

For Research Use Only. Not for use in diagnostic procedures.

**Note:** Additional Immunotherapy and Fc Effector Bioassays are available. To view and order Promega Bioassay products visit: [www.promega.com/products/reporter-bioassays/](http://www.promega.com/products/reporter-bioassays/) or visit Promega Tailored Solutions web site: [www.promega.com/custom-solutions/tailored-solutions](http://www.promega.com/custom-solutions/tailored-solutions).

## 8. Summary of Changes

The following changes were made to the 1/24 revision of this document:

1. Updated patent statements.
2. Changed font and cover image.
3. Made minor text edits.

<sup>(6)</sup>NOT FOR MEDICAL DIAGNOSTIC USE. FOR IN VITRO USE ONLY. BY USE OF THIS PRODUCT, RECIPIENT AGREES TO BE BOUND BY THE TERMS OF THIS LIMITED USE STATEMENT. If the recipient is not willing to accept the conditions of this limited use statement, and the product is unused, Promega will accept return of the unused product and provide the recipient with a full refund.

This product may not be further sold or transferred by the recipient and may be used only by the recipient, and then only for (1) research use, (2) discovery, development and monitoring of biologic drugs and vaccines, (3) quality assurance testing of biologic drugs and vaccines, and (4) product release assays for biologic drugs and vaccines. No other commercial use is allowed. "Commercial use" means any and all uses of this product by recipient for monetary or other consideration, including providing a service, information or data to unaffiliated third parties, and resale of this product for any use. Recipient has no right to propagate, modify, derivatize, genetically engineer or otherwise create variations of the cells or genes stably transfected within the cells. In addition, recipient must use Bio-Glo™ Luciferase Assay System purchased from Promega Corporation for all luminescence assays using this product or contact Promega to obtain a license for use of this product with reagents other than Promega's. PROMEGA MAKES NO REPRESENTATIONS OR WARRANTIES OF ANY KIND, EITHER EXPRESSED OR IMPLIED, INCLUDING AS TO MERCHANTABILITY OR FITNESS FOR A PARTICULAR PURPOSE WITH REGARDS TO THIS PRODUCT. The terms of this agreement shall be governed under the laws of the State of Wisconsin, USA.

<sup>(6)</sup>U.S. Pat. No. 8,008,006 and 10,077,244.

<sup>(6)</sup>Licensed from Lonza Cologne GmbH under U.S. Pat. Nos. 7,700,357 and 8,003,389, European Pat. Nos. 1607484 and 1741778 and other pending and issued patents.

© 2016–2024 Promega Corporation. All Rights Reserved.

GloMax is a registered trademark of Promega Corporation. Bio-Glo and Bio-Glo-NL are trademarks of Promega Corporation.

Blinicyto is a trademark of Amgen Inc. GraphPad Prism is a registered trademark of GraphPad Software, Inc. JMP is a registered trademark of SAS Institute, Inc. Mr. Frosty is a registered trademark of Nalge Nunc International Corporation. Multichannel Arm is a trademark of Tecan Group Ltd. Multidrop is a trademark of Thermo Fisher Scientific, Ltd. Styrofoam is a registered trademark of Dow Chemical Company.

Products may be covered by pending or issued patents or may have certain limitations. Please visit our Web site for more information.

All prices and specifications are subject to change without prior notice.

Product claims are subject to change. Please contact Promega Technical Services or access the Promega online catalog for the most up-to-date information on Promega products.