

TECHNICAL BULLETIN

Trypsin Gold, Mass Spectrometry Grade

Instructions for Use of Product
V5280



Trypsin Gold, Mass Spectrometry Grade

All technical literature is available at: www.promega.com/protocols/
 Visit the web site to verify that you are using the most current version of this Technical Bulletin.
 E-mail Promega Technical Services if you have questions on use of this system: techserv@promega.com

1. Description.....		1
2. Product Components and Storage Conditions		2
3. Trypsin Protocols.....		3
3.A. In-Gel Protein Digestion		3
3.B. Digestion of Proteins in Solution.....		4
4. Troubleshooting.....		5
5. Appendix.....		6
5.A. Trypsin Inhibitors		6
5.B. ZipTip® Protocol		6
5.C. References		6
5.D. Related Products		7
5.E. Summary of Change		8

1. Description

Trypsin is a serine protease that specifically cleaves at the carboxylic side of lysine and arginine residues. The distribution of Lys and Arg residues in proteins is such that trypsin digestion yields peptides of molecular weights that can be analyzed by mass spectrometry. The pattern of peptides obtained is used to identify the protein.

The stringent specificity of trypsin is essential for protein identification. Native trypsin is subject to autolysis, generating pseudotrypsin, which exhibits a broadened specificity including a chymotrypsin-like activity (1). Such autolysis products, present in a trypsin preparation, would result in additional peptide fragments that could interfere with database analysis of the mass of fragments detected by mass spectrometry.

Trypsin Gold, Mass Spectrometry Grade, has been manufactured to provide maximum specificity. Lysine residues in the porcine trypsin have been modified by reductive methylation, yielding a highly active and stable molecule that is extremely resistant to autolytic digestion (2). The specificity of the purified trypsin is further improved by TPCK treatment, which inactivates chymotrypsin. The treated trypsin is then purified by affinity chromatography and lyophilized to yield Trypsin Gold, Mass Spectrometry Grade.

Trypsin Gold, Mass Spectrometry Grade, has extremely high specific activity. Modified trypsin is maximally active in the range of pH 7–9 and is reversibly inactivated at pH <4. It is resistant to mild denaturing conditions such as 0.1% SDS, 1M urea or 10% acetonitrile (3) and retains 50% of its activity in 2M guanidine HCl (4). The activity of trypsin is decreased when acidic residues are present on either side of a susceptible bond. If proline is at the carboxylic side of lysine or arginine, the bond is almost completely resistant to cleavage by trypsin.

1. Description (continued)

Trypsin is often used for in-gel digestion. In this procedure, complex protein mixtures such as cell extracts are resolved by gel electrophoresis, and the band or spot of interest is excised from the gel and digested with trypsin. The digestion products are purified and concentrated, then analyzed by mass spectrometry to determine their molecular weights. Then database searches can be performed using the mass of the peptides to identify the protein(s) resolved on the gel (5).

Figure 1 is a spectrogram generated using this protocol. When the masses observed on this spectrogram were entered into a database, the protein was identified as carbonic anhydrase II.

Each lot of quality-tested Trypsin Gold, Mass Spectrometry Grade, is qualified for use with in-gel digestion and mass spectrometric analysis. A copy of the spectrogram generated with carbonic anhydrase II and any lot of Trypsin Gold, Mass Spectrometry Grade, may be obtained from Promega Technical Services at 1-800-356-9526.

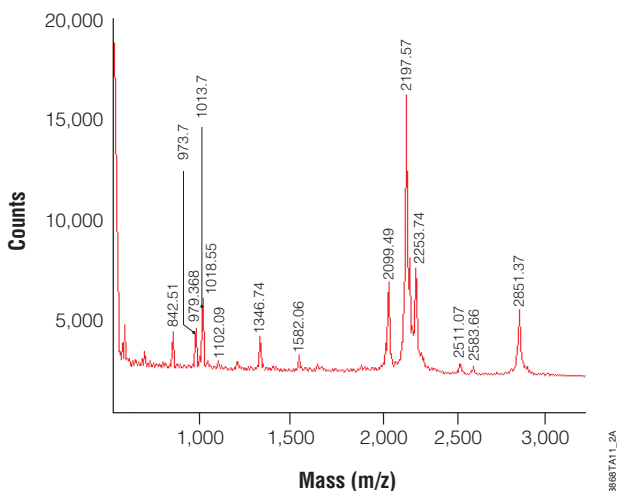


Figure 1. Spectrogram of bovine carbonic anhydrase II digested by Trypsin Gold, Mass Spectrometry Grade.

A 500ng sample of carbonic anhydrase II was separated by gel electrophoresis and digested with 500ng of Trypsin Gold, Mass Spectrometry Grade, overnight at 37°C. The peptides generated were purified as described in Sections 3 and 5 and analyzed using PerSeptive BioSystems Voyager-DE™ MALDI-TOF system. The peak at 842.51 is due to autolysis of trypsin.

2. Product Components and Storage Conditions

Product	Size	Cat.#
Trypsin Gold, Mass Spectrometry Grade	100µg	V5280

Storage Conditions: Store the lyophilized powder at –20°C. Reconstitute the powder in 50mM acetic acid and store at –20°C for up to one month. For long-term storage, freeze reconstituted trypsin at –70°C. Thaw the reconstituted trypsin at room temperature, placing on ice immediately after thawing. Remove the amount of trypsin needed, then refreeze the unused portion. To maintain maximum product activity, limit the number of freeze-thaw cycles to five.

3. Trypsin Protocols

3.A. In-Gel Protein Digestion

Numerous protocols for in-gel protein digestion have been described (6–8). The following procedure has been used successfully by Promega scientists.

Materials To Be Supplied by the User

- SimplyBlue™ SafeStain (Invitrogen Cat.# LC6060)
- trifluoroacetic acid (TFA)
- acetonitrile (ACN)
- 200mM NH_4HCO_3 buffer (pH 7.8)
- NANOpure® water
- ZipTip®_{SCX} pipette tips (Millipore Cat.# ZTSCXS096)
- α -cyano-4-hydroxycinnamic acid (CHCA)
- MALDI target
- ZipTip®_{C18} pipette tips (Millipore Cat.# ZTC18S096)



We recommend wearing gloves throughout the in-gel digestion procedure to avoid contamination of samples by protein present on hands.

1. Separate protein samples by electrophoresis on an SDS-Tris-Glycine gel (see Note 1 at the end of this section).
2. Rinse the gel three times, for 5 minutes each rinse, in NANOpure® water. Stain for 1 hour in SimplyBlue™ SafeStain (Invitrogen Corporation) at room temperature with gentle agitation (see Note 1 at the end of this section). When staining is complete, discard the staining solution.
3. Destain the gel for 1 hour in NANOpure® water at room temperature with gentle agitation. When destaining is complete, discard the solution.
4. Using a clean razor blade, cut the protein bands of interest from the gel, eliminating as much polyacrylamide as possible. Place the gel slices into a 0.5ml microcentrifuge tube that has been prewashed twice with 50% acetonitrile (ACN)/0.1% trifluoroacetic acid (TFA).

Note: To avoid contamination, razor blades, staining containers and all other equipment that comes into contact with the gel or gel slices should be cleaned with laboratory detergent (e.g., Alconox®) and rinsed well prior to use.

5. Destain the gel slices twice with 0.2ml of 100mM NH_4HCO_3 /50% ACN for 45 minutes each treatment at 37°C to remove the SimplyBlue™ SafeStain.
6. Dehydrate the gel slices for 5 minutes at room temperature in 100 μ l 100% ACN. At this point, the gel slices will be much smaller than their original size and will be whitish or opaque in appearance.
7. Dry the gel slices in a Speed Vac® for 10–15 minutes at room temperature to remove the ACN.
8. Resuspend the Trypsin Gold at 1 μ g/ μ l in 50mM acetic acid, then dilute in 40mM NH_4HCO_3 /10% ACN to 20 μ g/ml. Preincubate the gel slices in a minimal volume (10–20 μ l) of the trypsin solution at room temperature (do **not** exceed 30°C) for 1 hour. The slices will rehydrate during this time. If the gel slices appear white or opaque after one hour, add an additional 10–20 μ l of trypsin and incubate for another hour at room temperature.

Note: Trypsin specific activities can vary. Procedures describing the use of trypsin by weight may need to be optimized depending on the specific activity of the trypsin being used.

3.A. In-Gel Protein Digestion (continued)

9. Add enough digestion buffer (40mM NH_4HCO_3 /10% ACN) to completely cover the gel slices. Cap the tubes tightly to avoid evaporation. Incubate overnight at 37°C.

Note: Alternatively, the buffer solution may be removed from the in-gel digestion immediately following the overnight incubation, dried with a Speed Vac®, then prepared for mass spectrometry. The effectiveness and utility of the aqueous and organic extractions following in-gel digests depends on the target protein and should be determined by the user. In general, the aqueous and organic extractions are recommended for initial digestions or for previously uncharacterized samples.

10. Incubate the gel slice digests with 150µl of NANOpure® water for 10 minutes, with frequent vortex mixing. Remove and save the liquid in a new microcentrifuge tube (see Note 2 at the end of this section).
11. Extract the gel slice digests twice with 50µl of 50% ACN/5% TFA (with mixing) for 60 minutes each time at room temperature (see Note 2 at the end of this section).
12. Pool all extracts (Steps 10 and 11) and dry in a Speed Vac® at room temperature for 2–4 hours (do **not** exceed 30°C).
13. Purify and concentrate the extracted peptides using ZipTip® pipette tips (Millipore Corporation) following the manufacturer's directions or the ZipTip® protocol described in Section 5.B.
14. The peptides eluted from the ZipTip® tips are now ready for mass spectrometric analysis.

Note: Other gel systems and staining reagents can be used for in-gel digestions (6–8) but should be tested to ensure compatibility with the protein of interest and the detection system being used.

3.B. Digestion of Proteins in Solution

In general, proteins require denaturation and disulfide bond cleavage for enzymatic digestion to reach completion (4). If partial digestion of a native protein is desired, begin this protocol at Step 3.

1. Dissolve the target protein in 8M urea/50mM Tris-HCl (pH 8) [or 50mM ammonium bicarbonate (pH 7.8)]/5mM DTT and incubate at 37°C for 1 hour.

Note: Disulfide bond reducing is efficient at 37°C in the presence of high urea concentration. Higher temperatures do not further improve reducing efficiency. Moreover, high temperatures will induce protein carbamylation. Also, we do not recommend using GuCl to denature proteins as it inhibits trypsin even at low concentrations.
2. Add iodoacetamide to a final concentration of 15mM and incubate for additional 30 minutes in the dark at room temperature.
3. Dilute the reaction with three volumes of 50mM Tris-HCl (pH 8) [or 50mM ammonium bicarbonate (pH 7.8)] to allow for trypsin digestion.
4. Add trypsin and incubate overnight at 37°C.

4. Troubleshooting

Symptoms

No or insufficient in-gel digestion

Causes and Comments

Different target proteins may require different digestion conditions. Determine optimum conditions for each target protein. This includes optimizing trypsin:protein ratios and incubation times.

Peptides not eluting from the ZipTip® tips. Optimize the ZipTip® elution conditions. Follow the manufacturer's directions for use.

Incompatible reconstitution buffer. We do not recommend reconstituting Trypsin Gold in buffers other than 50mM acetic acid.

Loss of trypsin activity due to multiple freeze-thaw cycles. Reconstituted trypsin is stable for up to 5 freeze-thaw cycles.

The spectrogram contains peaks at 842 and 2211

These peaks are due to autocatalytic trypsin cleavage at arginine residues, which are not protected by reductive methylation. These peaks are often used to calibrate the mass spectrometer.

Apparent chymotrypsin peaks on mass spectrogram

The presence of chymotrypsin is very unlikely because it is inhibited by TPCK. These peaks are most likely due to pseudotrypsin activity (1).

- Try using lower trypsin:protein ratios and shorter incubation times.
- We do not recommend reconstituting Trypsin Gold, Mass Spectrometry Grade, in buffers other than 50mM acetic acid.
- Reconstituted trypsin subjected to more than 5 freeze-thaw cycles may contain products of autolysis.

Reaction contamination

Keratin is a contaminant from skin and hair commonly introduced during sample handling. Wear gloves. Work in a hood. Thoroughly clean all equipment and use disposable components when possible.

5. Appendix

5.A. Trypsin Inhibitors

The following are general trypsin inhibitors:

Antipain (50µg/ml), antithrombin (1 unit/ml), APMSF (0.01–0.04mg/ml), aprotinin (0.06–2µg/ml), leupeptin (0.5µg/ml), PMSF (17–170µg/ml), TLCK (37–50µg/ml), trypsin inhibitors (10–100µg/ml).

5.B. ZipTip® Protocol

Promega scientists have successfully used the following ZipTip® (ZipTip®_{SCX} or ZipTip®_{C18}) pipette tip protocol for purification and sample concentration. These conditions may not be optimal for all proteins/peptides.

1. Prepare ZipTip® tips by washing with 10µl of 100% ACN, then washing 2–3 times with 10µl of 0.1% TFA.
2. Reconstitute the samples with 10µl of 0.1% TFA.
3. Draw the sample into ZipTip® tips by pipetting fully into and out of tips 4–5 times. Expel liquid.
4. Wash ZipTip® tips 2–3 times with 10µl of 0.1% TFA to remove contaminants.
5. Elute peptides in 2.5µl of 70% ACN/0.1% TFA containing 10mg/ml α-cyano-4-hydroxycinnamic acid (CHCA) and spot directly onto MALDI target.

5.C. References

1. Keil-Dlouha, V. *et al.* (1971) Proteolytic activity of pseudotrypsin. *FEBS Lett.* **16**, 291–5.
2. Rice, R.H., Means, G.E. and Brown, W.D. (1977) Stabilization of bovine trypsin by reductive methylation. *Biochem. Biophys. Acta* **492**, 316–21.
3. Bond, J.S. (1989) “Commercially Available Proteases”, Appendix II. In: *Proteolytic Enzymes, A Practical Approach*, R.J. Beynon and J.S. Bond, eds., IRL Press, Oxford, 240.
4. Wilkinson, J.M. (1986) “Fragmentation of Polypeptides by Enzymic Methods”. In: *Practical Protein Chemistry: A Handbook*, A. Darbre, ed., John Wiley and Sons, New York, 122.
5. Mann, M., Hendrickson, R.C. and Pandey, A. (2001) Analysis of proteins and proteomes by mass spectrometry. *Annu. Rev. Biochem.* **70**, 437–73.
6. Flannery, A.V., Beynon, R.J. and Bond, J.S. (1989) “Proteolysis of Proteins for Sequencing Analysis and Peptide Mapping”. In: *Proteolytic Enzymes: A Practical Approach*, R.J. Beynon and J.S. Bond, eds., IRL Press, Oxford, 45.
7. Shevchenko, A. *et al.* (1996) Mass spectrometric sequencing of proteins silver-stained polyacrylamide gels. *Anal. Chem.* **68**, 850–8.
8. Rosenfeld, J. *et al.* (1992) In-gel digestion of proteins for internal sequence analysis after one- or two-dimensional gel electrophoresis. *Anal. Biochem.* **203**, 173–9.
9. Sheer, D.G. (1994) Techniques in Protein Chemistry, J.W. Crabb ed., Academic, San Diego **Volume V**, 243.

5.D. Related Products

Product	Size	Conc.	Cat.#
Asp-N, Sequencing Grade	2µg		V1621
Arg-C, Sequencing Grade	10µg		V1881
Chymotrypsin, Sequencing Grade	25µg		V1061
	100µg (4 × 25µg)		V1062
Elastase	5mg		V1891
Endo H	10,000u	500u/µl	V4871
	50,000u	500u/µl	V4875
Endoproteinase Lys-C, Sequencing Grade	5µg		V1071
Fetuin	500µg	10mg/ml	V4961
Glu-C, Sequencing Grade	50µg (5 × 10µg)		V1651
Immobilized Trypsin	2ml		V9012
	4ml (2 × 2ml)		V9013
Pepsin	250mg		V1959
PNGase F	500u	10u/µl	V4831
ProteaseMAX™ Surfactant, Trypsin Enhancer	1mg		V2071
	5 × 1mg		V2072
Protein Deglycosylation Mix	20 reactions		V4931
rLys-C, Mass Spec Grade	15µg		V1671
Sequencing Grade Modified Trypsin	100µg (5 × 20µg)		V5111
	100µg (1 × 100µg)		V5117
Sequencing Grade Modified Trypsin, Frozen	100µg (5 × 20µg)		V5113
Thermolysin	25mg		V4001
Trypsin/Lys-C Mix, Mass Spec Grade	20µg		V5071
	100µg (1 × 100µg)		V5072
	100µg (5 × 20µg)		V5073
6 x 5 LC-MS/MS Peptide Reference Mix	50µl		V7491
	200pmoles		V7495
MS Compatible Yeast Protein Extract, Digest	100µg		V7461
MS Compatible Human Protein Extract, Digest	100µg		V6951



5.E. Summary of Change

The following change were made to the 10/18 revision of this document:

Reformatted the second Note in Section 3.A.

© 2002—2018 Promega Corporation. All Rights Reserved.

Alconox is a registered trademark of Alconox, Inc. NANOpure is a registered trademark of Barnstead/ThermoFisher Corporation. SimplyBlue is a trademark of Life Technologies, Inc. Speed Vac is a registered trademark of Savant Instruments, Inc. Voyager-DE is a trademark of Applera Corporation. ZipTip is a registered trademark of Millipore Corporation.

Products may be covered by pending or issued patents or may have certain limitations. Please visit our Web site for more information.

All prices and specifications are subject to change without prior notice.

Product claims are subject to change. Please contact Promega Technical Services or access the Promega online catalog for the most up-to-date information on Promega products.