

Transcend™ Non-Radioactive Translation Detection Systems

INSTRUCTIONS FOR USE OF PRODUCTS L5061, L5070 AND L5080.

Quick
PROTOCOL

Non-Radioactive Translation and Detection Protocol

Translation Protocol

1. Thaw the Transcend™ tRNA on ice. Thaw the translation lysate by hand-warming and immediately place on ice. Thaw all other components at 37°C and then store on ice.
2. Set up reactions on ice, adding all the components except the Transcend™ tRNA. Gently mix the samples and briefly centrifuge if necessary. Add the Transcend™ tRNA.

Rabbit Reticulocyte Lysate	35µl
Nuclease-Free Water	10µl
RNasin® Ribonuclease Inhibitor (40u/µl)	1µl
1mM complete amino acid mixture (or mixture of two minus amino acid mixtures)	1µl
RNA template in Nuclease-Free Water	2µl
Transcend™ tRNA	1–2µl
final volume	50µl

3. Immediately incubate the translation reaction at 30°C for 60 minutes.
4. Place the tube on ice to terminate the reaction.

Denaturing Gel Analysis of Translation Products

1. Remove 1µl of the 50µl translation reaction and add it to 15µl of SDS sample buffer.
2. Heat to 90°C for 2 minutes.
3. Load the denatured samples onto an SDS-polyacrylamide gel and perform electrophoresis.

See the reverse side for colorimetric and chemiluminescent detection of translation products.



Set up reaction on ice.



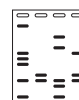
Add 1–2µl of Transcend™ tRNA.



Immediately incubate at 30°C for 60 minutes.



Place tube on ice to terminate reaction.



Aliquot 1µl of the translation reaction to 15µl of SDS sample buffer. Heat to 90°C for 2 minutes. Analyze sample by SDS-PAGE.

3004MA07_0A

See additional protocol information in Technical Bulletin #TB182, available online at: www.promega.com/tbs

ORDERING/TECHNICAL INFORMATION:

www.promega.com • Phone 608-274-4330 or 800-356-9526 • Fax 608-277-2601



Promega

Printed in USA. Revised 3/09.
Part# 9FB050

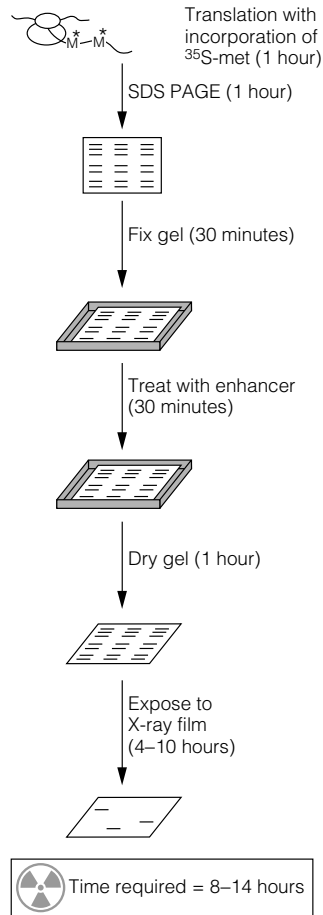
Transcend™ Non-Radioactive Translation Detection Systems

INSTRUCTIONS FOR USE OF PRODUCTS L5061, L5070 AND L5080.

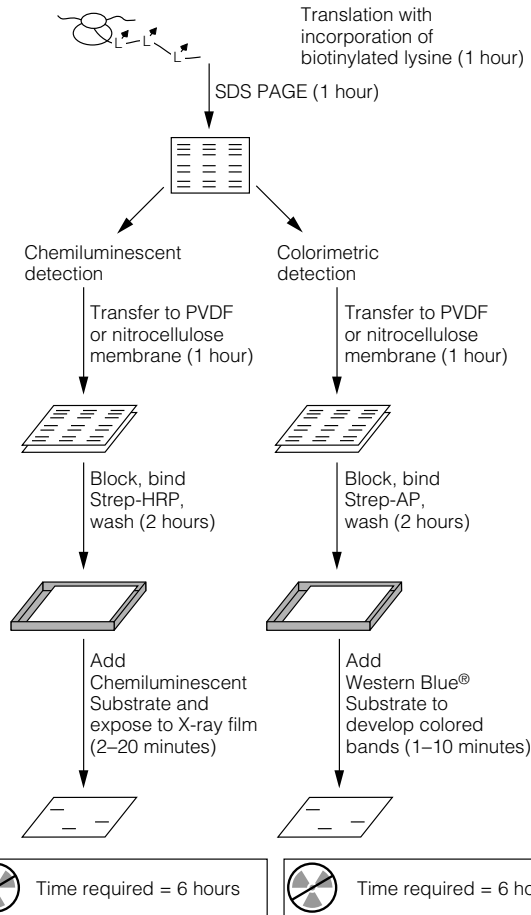
Quick
PROTOCOL

Colorimetric and Chemiluminescent Detection of Translation Products

Standard radioisotopic incorporation and detection



Transcend™ Biotinylated Lysine tRNA incorporation and detection



0878MA08_3A

ORDERING/TECHNICAL INFORMATION:

www.promega.com • Phone 608-274-4330 or 800-356-9526 • Fax 608-277-2601



Promega