

TECHNICAL MANUAL

Maxwell[®] RSC Methods Installation



Maxwell® RSC Methods Installation

All technical literature is available at: www.promega.com/protocols/
 Visit the web site to verify that you are using the most current version of this Technical Manual.
 E-mail Promega Technical Services if you have questions on use of this system: techserv@promega.com

1.	Maxwell® RSC Methods	1
2.	Importing a New Method	2

1. Maxwell® RSC Methods

This Technical Manual provides instructions on the installation of new or updated methods onto the Maxwell® RSC Instrument.

As Promega provides new purification kits, new protocol methods can be added to the Maxwell® RSC Instrument. Occasionally, an existing protocol method may have to be updated. Only Administrators can add new protocol methods or update existing methods. Administrators can download protocol methods from the Promega web site at: www.promega.com/resources/tools/maxwellrscmethod

Administrators can view all of the methods installed on the Maxwell® RSC Instrument or import new methods by touching the **Methods** button on the Administrator page window (Figure 1). The **Methods** window displays a list of the currently installed methods in the user interface including the *name*, *version number*, and *catalog number* for each method.

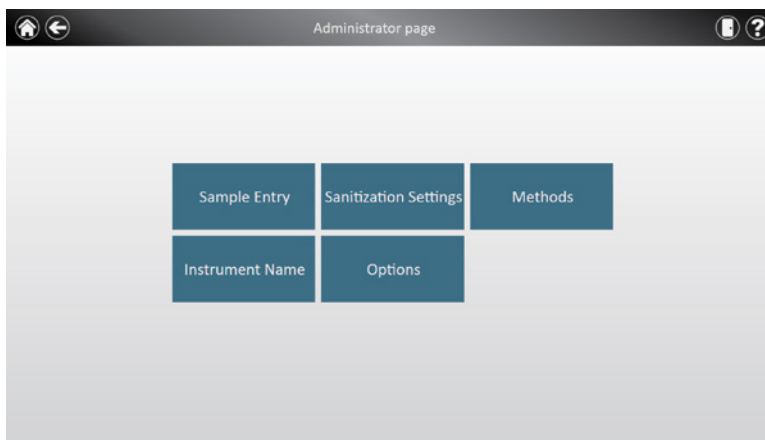


Figure 1. Administrator Page window. The Administrator can view the Methods installed on this instrument or import new methods settings by touching the **Methods** button on the **Administrator page** window.

2. Importing a New Method

Methods for the Maxwell® RSC Instrument are provided as encrypted files with a .package extension and can be downloaded from the Promega web site at: www.promega.com/resources/tools/maxwellrscmethod. After downloading the .package file to a PC, follow the steps below to import the new method(s) into the Maxwell® RSC software.

Note: Administrator-level access to the Maxwell® RSC Software is required to import new methods.

1. Use a USB drive to transfer the new package file from the PC to the hard drive on the tablet attached to your Maxwell® RSC Instrument. Note the path to the package file containing the method(s) you wish to import.

Note: Package files containing the original methods installed on your Maxwell® RSC instrument are found in the path:

C:\Program Files\Promega\Instruments\Maxwell RSC\Packages

2. Log into the Maxwell® RSC Software as an Administrator. From the **Home** screen you will have access to the **Settings** button, which allows modification of software-specific settings including import of new methods (Figure 2).

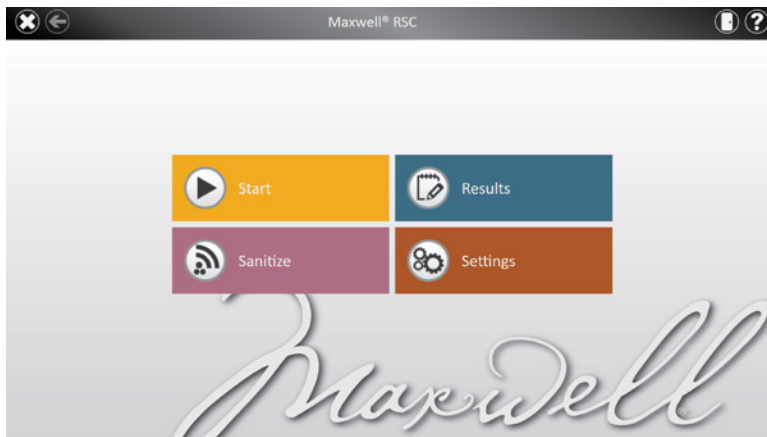


Figure 2. Maxwell® RSC Home screen. Operators can touch the **Settings** button to access installed method information and import new methods onto the Maxwell® RSC Instrument.

3. Touch the **Settings** button to open the **Settings** window (Figure 3).

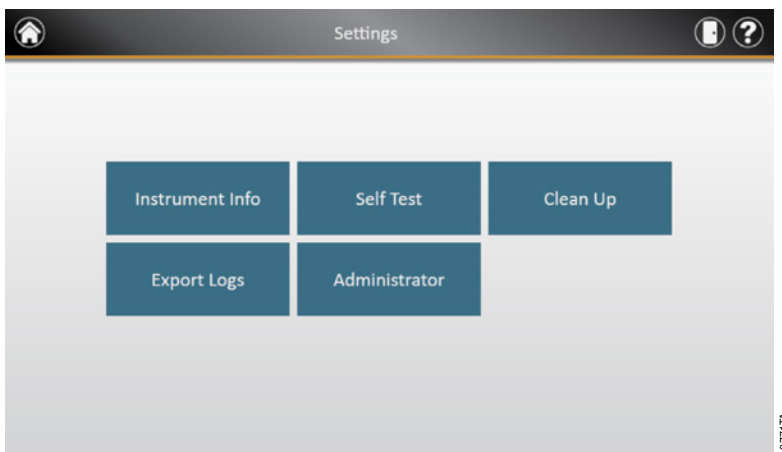


Figure 3. Maxwell® RSC Settings screen. Administrators can access the Administrator settings from this screen.

4. From the **Settings** window, touch the **Administrator** button to open the **Administrator page** window (Figure 4).
5. From the **Administrator page** window touch the **Methods** button to open the **Methods** window (Figure 5). The **Methods** window displays a list of the currently installed methods in the Maxwell® RSC Software. This list shows the name, version number, and kit catalog number for each method.

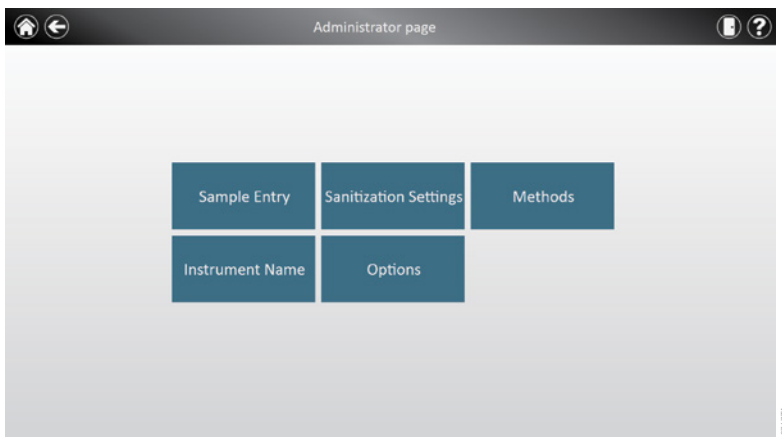
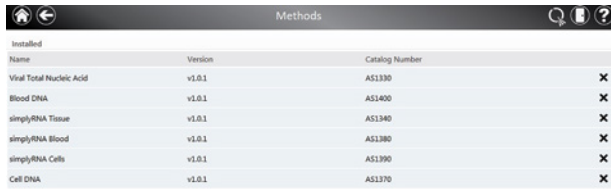


Figure 4. Administrator Page window. From this window administrators can access the **Methods** window to see the methods currently installed in the Maxwell® RSC Software and import new methods.

2. Importing a New Method (continued)



Installed		
Name	Version	Catalog Number
Viral Total Nucleic Acid	v1.0.1	AS1330
Blood DNA	v1.0.1	AS1400
simplyRNA Tissue	v1.0.1	AS1340
simplyRNA Blood	v1.0.1	AS1380
simplyRNA Cells	v1.0.1	AS1390
Cell DNA	v1.0.1	AS1370

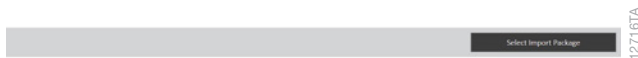


Figure 5. Methods window. This window displays a list of the methods installed in the Maxwell® RSC Software.

- The **Select Import Package** button in the bottom right corner of the **Methods** window allows the Administrator to select a package file containing the method script for import into the Maxwell® RSC Software. Touching the **Select Import Package** button displays the **Select File** window from which you can navigate to the location of the package file you wish to import (Figure 6).

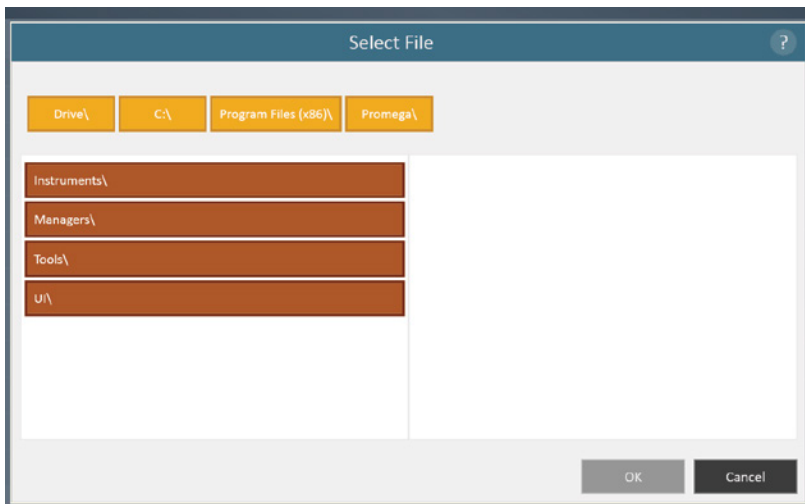


Figure 6. Select file for importing. This figure shows the screen for selecting a new method import file.

- The current path is indicated by the yellow rectangles at the top of the **Select File** window. Any folders present within the default path are displayed as red rectangles in the main portion of the window and package files are displayed as blue rectangles. Touch any of the yellow or red boxes to navigate to the location of the desired package file. Touching a blue package file button (Figure 7) will activate the **OK** button in the bottom right corner of the window. Touch the **OK** button to return to the **Methods** window and view the method(s) present in that package file (Figure 7).

! **Important:** If an update to an existing kit method is imported into the Maxwell® RSC Software, the new method will overwrite the original.

Note: The package file(s) containing the methods originally installed in the Maxwell® RSC Software can be accessed from the path: C:\Program Files\Promega\Instruments\Maxwell RSC\Packages

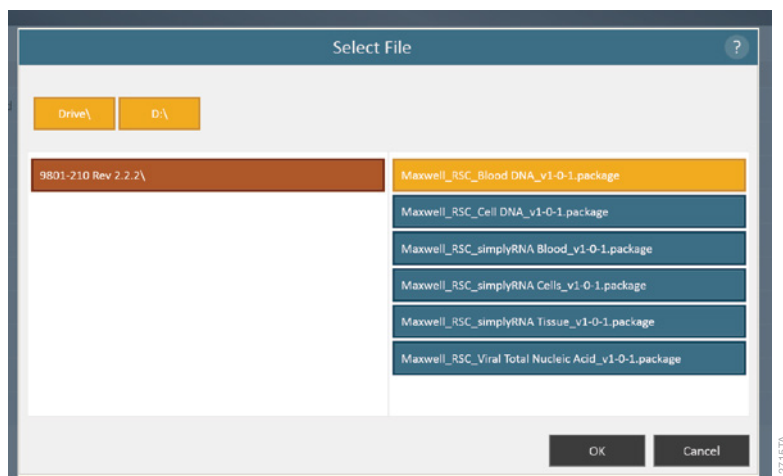


Figure 7. Methods window. After navigating to the appropriate package file, the Administrator can touch the **OK** button to import the new method.

2. Importing a New Method (continued)

8. Once the import is complete, a message will appear indicating that the method was successfully imported (Figure 8). Touch the **OK** button to view the installed methods. Touch the **Back** button to return to the **Administrator** page. Touch the **Home** button in the title bar to return to the **Home** screen.

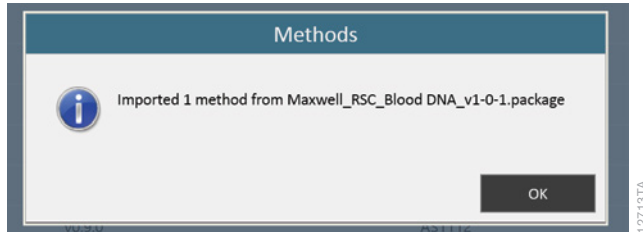


Figure 8. Confirmation of method import. A message will appear indicating that the method was successfully imported.

9. To delete methods from the Maxwell[®] RSC Instrument Software, the Administrator should touch the X icon on the right side of the specified method. Deleted methods can be re-imported at a later date, if desired. Each method has a version number, which can be accessed by an Administrator. If you need to reinstall a previous method, you will need the package file for that version. After importing a new kit and associated method, the Maxwell[®] RSC Software database is updated, allowing users to scan the new kit bar code and have the new method automatically loaded. Promega will notify registered users of any Maxwell[®] RSC Software updates. Administrators can download updated Maxwell[®] RSC Software from the Promega web site.

It is the manufacturer's responsibility to provide equipment electromagnetic compatibility information to the customer or user.

It is the user's responsibility to ensure that a compatible electromagnetic environment for the equipment can be maintained in order that the device will perform as intended.

© 2014 Promega Corporation. All Rights Reserved.

Maxwell is a registered trademark of Promega Corporation.

Products may be covered by pending or issued patents or may have certain limitations. Please visit our Web site for more information.

All prices and specifications are subject to change without prior notice.

Product claims are subject to change. Please contact Promega Technical Services or access the Promega online catalog for the most up-to-date information on Promega products.