



Promega

Technical Bulletin

PowerPlex[®] Matrix Standards, 310

INSTRUCTIONS FOR USE OF PRODUCT DG4640.



www.promega.com

PRINTED IN USA.
Revised 8/10

Part# TBD021

PowerPlex[®] Matrix Standards, 310

All technical literature is available on the Internet at: www.promega.com/tbs/
 Please visit the web site to verify that you are using the most current version of this Technical Bulletin. Please contact Promega Technical Services if you have questions on use of this system. E-mail techserv@promega.com.

1. Description.....	1
2. Product Components and Storage Conditions	2
3. Detection of Matrix Fragments Using the ABI PRISM [®] 310 Genetic Analyzer and GeneMapper [®] ID Software	3
A. Instrument Preparation	3
B. Matrix Sample Preparation.....	4
C. Capillary Electrophoresis and Detection.....	4
D. Matrix Generation for the ABI PRISM [®] 310 Genetic Analyzer	5
4. Troubleshooting.....	7
5. Appendix.....	10
A. Detection of Matrix Fragments Using the ABI PRISM [®] 377 DNA Sequencer.....	10
B. Detection of Matrix Fragments Using the ABI PRISM [®] 310 Genetic Analyzer and GeneScan [®] Software	14
C. Composition of Buffers and Solutions	17
6. Related Products	17

1. Description

Proper generation of a matrix file is critical to evaluate multicolor systems with the ABI PRISM[®] 310 Genetic Analyzer and ABI PRISM[®] 377 DNA Sequencer. To prepare a matrix, four standards are analyzed using the same electrophoresis conditions as those for samples and allelic ladders. The PowerPlex[®] Matrix Standards, 310, consists of DNA fragments labeled with four fluorescent dyes: one tube contains DNA fragments labeled with fluorescein, one tube contains DNA fragments labeled with carboxy-tetramethylrhodamine (TMR), one tube contains DNA fragments labeled with 6-carboxy-4',5'-dichloro-2',7'-dimethoxyfluorescein (JOE), and one tube contains DNA fragments labeled with carboxy-X-rhodamine (CXR).

1. Description (continued)

Use the fluorescein Matrix, JOE Matrix, TMR Matrix and CXR Matrix for the blue, green, yellow and red standards, respectively. The PowerPlex® Matrix Standards, 310, can be used with the PowerPlex® 16, PowerPlex® 16 HS, PowerPlex® Y, PowerPlex® ES and PowerPlex® S5 Systems. It also can be used with the PowerPlex® 1.2 System (fluorescein- and TMR-labeled) or any of the fluorescent STR systems (fluorescein-labeled). A matrix should be generated for each individual instrument. Protocols to operate the fluorescence-detection instrumentation should be obtained from the manufacturer.

For information on other Promega fluorescent STR systems, refer to the *PowerPlex® 16 System Technical Manual #TMD012*, *PowerPlex® 16 HS System Technical Manual #TMD022*, *PowerPlex® Y System Technical Manual #TMD018*, *PowerPlex® ES System Technical Manual #TMD017*, *PowerPlex® S5 System Technical Manual #TMD021* and *GenePrint® Fluorescent STR Systems Technical Manual #TMD006*. These Technical Manuals and additional product information are available at: www.promega.com

2. Product Components and Storage Conditions

Product	Size	Cat.#
PowerPlex® Matrix Standards, 310	50µl (each dye)	DG4640

Not for Medical Diagnostic Use. Includes:

- 50µl Fluorescein Matrix
- 50µl JOE Matrix
- 50µl TMR Matrix
- 50µl CXR Matrix
- 1ml Blue Dextran Loading Solution


Storage Conditions: Store all components at -20°C in a nonfrost-free freezer. Do not store reagents in the freezer door, where the temperature can fluctuate. The fragments in the matrix standards are light-sensitive and must be stored in the dark. We strongly recommend that the matrix standards be stored with post-amplification reagents (away from pre-amplification materials) and used separately with different pipettes, tube racks, etc.


Additional product information and ordering information for accessory components and related products are available upon request from Promega or at: www.promega.com

3. Detection of Matrix Fragments Using the ABI PRISM® 310 Genetic Analyzer and GeneMapper® ID Software

Materials to Be Supplied by the User

- dry heating block, water bath or thermal cycler
- crushed ice or ice-water bath
- 310 capillaries, 47cm × 50µm
- performance optimized polymer 4 (POP-4™ polymer)
- 10X genetic analyzer buffer
- sample tubes and septa
- aerosol-resistant pipette tips
- Hi-Di™ formamide (Applied Biosystems Cat.# 4311320)

 The quality of formamide is critical. Use Hi-Di™ formamide. Freeze formamide in aliquots at -20°C. Multiple freeze-thaw cycles or long-term storage at 4°C may cause breakdown of formamide. Poor-quality formamide may contain ions that compete with DNA during injection, which results in lower peak heights and reduced sensitivity. A longer injection time may not increase the signal.

 Formamide is an irritant and a teratogen; avoid inhalation and contact with skin. Read the warning label, and take the necessary precautions when handling this substance. Always wear gloves and safety glasses when working with formamide.

3.A. Instrument Preparation

Refer to the *ABI PRISM® 310 Genetic Analyzer User's Manual* for instructions on cleaning the pump block, installing the capillary, calibrating the autosampler and adding polymer to the syringe.

1. Open the ABI PRISM® 310 Data Collection Software, Version 3.1.0.
2. To preheat the ABI PRISM® 310 Genetic Analyzer to 60°C, select "Manual Control" in the Window menu. In the Function menu, select "Temperature Set". Set Value to "60.0", then select "Execute". Close the Manual Control screen.
3. In the File menu, select "New" to open the Create New menu. Open a GeneScan® sample sheet (either "48-Tube" or "96-Tube").
4. In the upper right corner of the sample sheet, "4 Dyes" should be selected. Enter the appropriate sample information in the Sample Name field. Matrix sample names should be descriptive; for example, add the color to the sample name. Label tubes with the corresponding sample names.
5. To save the sample sheet, select "Save As" in the File menu. Assign a name to the file, and save to the Sample Sheet folder. Close the file.
6. In the File menu, select "New" to open the Create New menu.
7. Open the GeneScan® injection list.

3.A. Instrument Preparation (continued)

8. Select the sample sheet (i.e., the .gss file) that was created in Step 5.
9. The recommended module is GS STR POP4 (1mL) **F.md4**; choose this module using the pull-down menu.

The settings should be:

Inj. Secs:	3
Inj. kV:	15.0
Run kV:	15.0
Run °C:	60
Run Time (minutes):	30

Note: The injection time may need to be increased or decreased, depending on instrument sensitivity. Peak heights of 1,000–4,000RFU are optimal for matrix generation.

10. Select “none” for the matrix file.

3.B. Matrix Sample Preparation

1. Thaw the matrix standards. For each matrix standard, vortex the tube for 5–10 seconds to mix, then add 2µl of matrix standard to 25µl of Hi-Di™ formamide.
2. Denature each sample for 3 minutes at 95°C, and immediately chill on crushed ice or in an ice-water bath for 3 minutes. Denature samples just prior to loading.
3. Place tubes in the appropriate autosampler tray (48-tube or 96-tube).
4. Place the autosampler tray in the instrument, and close the instrument doors.

3.C. Capillary Electrophoresis and Detection

1. After loading the sample tray and closing the doors, select “Run” to start the capillary electrophoresis system.
2. Monitor the electrophoresis by observing the raw data and status windows.

Each sample will take approximately 40 minutes for syringe pumping, sample injection and electrophoresis.

Note: The matrix files that are created will be .fsa files. After the run is finished, save or transfer the .fsa files to a secure location where they can be opened in a GeneMapper® project.

3.D. Matrix Generation for the ABI PRISM® 310 Genetic Analyzer

1. Open a new GeneMapper® project. To add matrix sample files to the new project, select "Add Samples to Project" in the File menu. Choose the appropriate run folder containing the .fsa files from Section 3.C. Highlight the run folder, select "Add To List", then "Add".
2. To open the raw data for a specific matrix sample file, locate "Project" in the upper left corner of the screen, and double-click on the run folder to reveal the .fsa files
3. Choose a single .fsa file to observe the raw data. While viewing the raw data, move the cursor to the region that is to the right of the primer peak and to the left of at least five peaks. Choose a region in a flat part of the baseline.
4. Record the data point value found at the lower left portion of the screen for use in Step 6. Repeat this step for each matrix standard.

<u>Dye Color</u>	<u>Corresponding Matrix</u>	<u>"Start At" Value</u>
Blue	Fluorescein Matrix	
Green	JOE Matrix	
Yellow	TMR Matrix	
Red	CXR Matrix	

5. To create a new matrix, select "GeneMapper Manager" in the Tools menu. Select the Matrices tab, then "New".
6. Define the new matrix in the Matrix Editor (Figure 1).

Note: The Matrix Name, "Start At" values and Matrix Result values shown in Figure 1 will change, depending on your instrument.

- a. Assign a matrix name in the Matrix Name field.
- b. Set Number of Dyes to "4".
- c. To select each matrix standard sample file, click on the dye color for each matrix (B for fluorescein, G for JOE, Y for TMR and R for CXR). Navigate to the .fsa sample file that corresponds to that dye, and double-click on it to add the sample file. Repeat this step for each matrix standard.

Note: To find the .fsa files in the default location, go to: "My Computer", "AB SW8DATA (D)", "Applied Bio", "310", then "Runs", and locate the correct run folder.

3.D. Matrix Generation for the ABI PRISM® 310 Genetic Analyzer (continued)

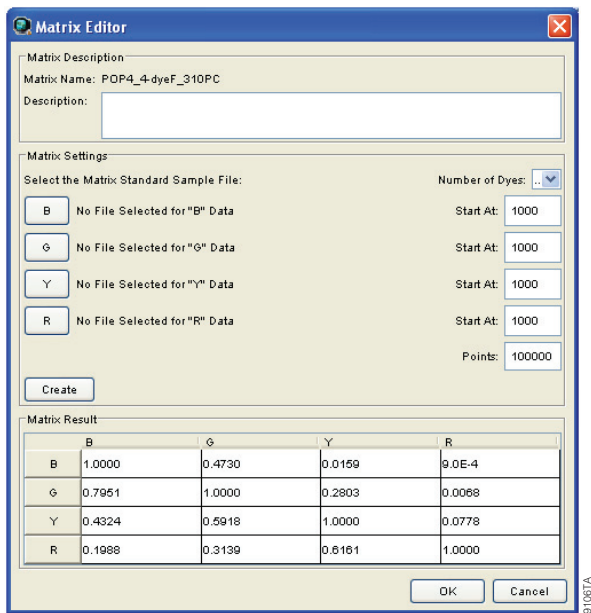


Figure 1. The Matrix Editor.

- d. Enter the data point value recorded from Step 4 in the “Start at” field. Repeat this step for each matrix standard.
- e. Click on the Create button. The Matrix Result should give a value of 1.000 when comparing a dye to itself. Typically, all other values will be less than 1.000.

Select “OK”, and the matrix will be created in the Matrices tab of the GeneMapper Manager. Select “Done”.

4. Troubleshooting

For questions not addressed here, please contact your local Promega Branch Office or Distributor. Contact information available at: www.promega.com. E-mail: techserv@promega.com

Symptoms	Causes and Comments
Unable to generate a matrix due to faint or no peaks	<p>Poor capillary electrophoresis (CE) injection. Re-inject the sample. Check the syringe for leakage. Check the laser power.</p> <hr/> <p>Poor-quality formamide was used. Use only fresh Hi-Di™ formamide when running samples on the ABI PRISM® 310 Genetic Analyzer.</p> <hr/> <p>Samples were degraded due to improper storage. Store matrix standards in the dark at -20°C protected from light. Do not store in the freezer door or in a frost-free freezer.</p> <hr/> <p>Peak heights were too low. Peak heights should be 1,000-4,000RFU for the ABI PRISM® 310 Genetic Analyzer and 800-2,000RFU for the ABI PRISM® 377 DNA Sequencer. To increase peak heights, increase injection time or loading volume.</p> <hr/> <p>Samples were not denatured. Heat-denature samples, and immediately chill on crushed ice or in an ice-water bath before loading the gel or capillary. Denature samples just prior to loading.</p>
Poor-quality matrix (extra peaks visible in one or all color channels)	<p>CE-related artifacts (“spikes”). Minor voltage changes or urea crystals passing by the laser can cause “spikes” or unexpected peaks. Spikes sometimes appear in one color but often are easily identified by their presence in more than one color. Re-inject the samples to confirm.</p> <hr/> <p>CE-related artifacts (contaminants). Contaminants in the water used with the ABI PRISM® 310 Genetic Analyzer and for diluting the 10X genetic analyzer buffer can generate peaks in the blue and green dye colors. Use autoclaved water to clean the pump block and prepare sample dilutions. Change vials, and wash the buffer reservoir.</p>

4. Troubleshooting (continued)

Symptoms	Causes and Comments
Poor-quality matrix (elevated baseline and/or inverted peaks in analyzed samples; see Figure 2)	<p>Matrix used was generated on another instrument. A matrix must be generated for each instrument.</p> <hr/> <p>Wrong dye was used. Generate the matrix using the same dyes as those in the samples.</p> <hr/> <p>Oversubtraction of signal occurred because signal was saturated. When generating a matrix, avoid choosing samples with peak heights that are higher than the recommended RFU values, as this can result in a matrix that causes inverted peaks or elevated baseline. Analyzed sample results may be improved by diluting the matrix samples in water before preparing them for use.</p>

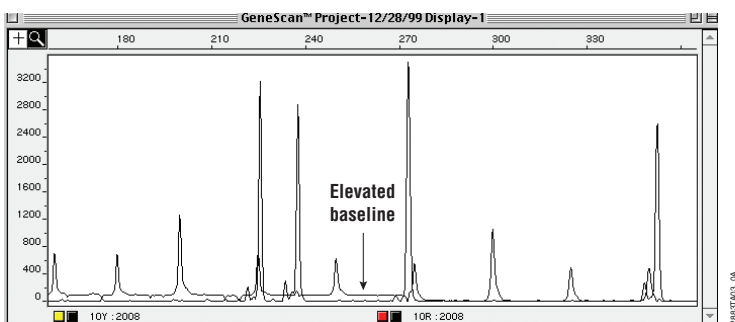


Figure 2. Elevated baseline. A sample was analyzed using an ABI PRISM® 310 Genetic Analyzer and GeneScan® analysis software. The resulting electropherogram shows an elevated baseline below 270 bases.

Symptoms	Causes and Comments
Inverted peaks in the matrix baseline (Figure 3)	<p>Incorrect or no "Start At" value was entered. The "Start At" value chosen in Section 3.D, 5.A or 5.B should have a flat baseline.</p> <p>Wrong colors were assigned to the dyes. Confirm the dye and color selection: Fluorescein: Blue JOE: Green TMR: Yellow CXR: Red</p>
Previously generated matrix no longer performs optimally	<p>Changes to or aging of instrument components. Instrument sensitivity can change if the instrument was moved or recently serviced (replacement or realignment of the laser, CCD camera, power supply or mirrors). The sensitivity also can change over time due to aging of the instrument. These changes can result in poor matrix performance. Generate a new matrix.</p>

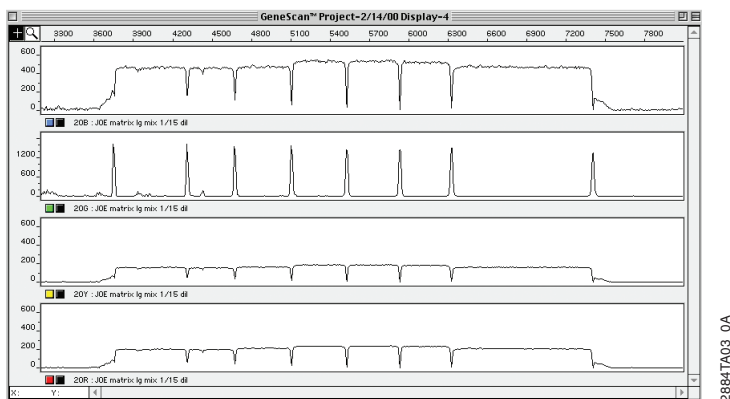


Figure 3. Inverted baseline. The four matrix samples from the PowerPlex® Matrix Standards, 310, were analyzed using an ABI PRISM® 310 Genetic Analyzer. A matrix was made using the GeneScan® analysis software, but no "Start At" point was entered for the matrix samples. The resulting matrix was applied to the JOE Matrix sample file, and analysis was performed using all four colors. The result shows inverted peaks in the blue, yellow and red channels.


5. Appendix

5.A. Detection of Matrix Fragments Using the ABI PRISM® 377 DNA Sequencer

Materials to Be Supplied by the User

(Solution compositions are provided in Section 5.C.)

- dry heating block, water bath or thermal cycler
- crushed ice or ice-water bath
- Long Ranger® gel solution (Lonza Cat.# 50611) or Long Ranger Singel® pack for ABI sequencers 377-36cm (Lonza Cat.# 50691)
- 10% ammonium persulfate
- TEMED
- Urea (Cat.# V3171)
- TBE 10X buffer
- Nalgene® tissue culture filter (0.2 micron)
- aerosol-resistant pipette tips
- gel-loading pipette tips
- 36cm front and rear glass plates
- 36cm gel spacers (0.2mm thick)
- 36-well sharktooth comb or 34-well squaretooth comb (0.2mm thick)
- clamps (e.g., large office binder clamps)
- Liqui-Nox® or other detergent
- 60cc syringe
- 30cc syringe
- 18-gauge needles

 Acrylamide (Long Ranger® gel solution) is a neurotoxin and suspected carcinogen; avoid inhalation and contact with skin. Read the warning label, and take the necessary precautions when handling this substance. Always wear gloves and safety glasses when working with acrylamide solutions.

Polyacrylamide Gel Preparation

Hazardous reagents are used in the preparation and use of gels for the ABI PRISM® 377 DNA Sequencer. The reagents and their hazards are listed in Table 1.

Table 1. Hazardous Reagents.

Reagents for ABI PRISM® 377 DNA Sequencer	Hazard
acrylamide (Long Ranger® gel solution)	suspected carcinogen, toxic
ammonium persulfate	oxidizer, corrosive
TEMED	corrosive, flammable
urea	irritant
formamide (contained in the Blue Dextran Loading Solution)	irritant, teratogen

The following protocol is for preparing a 36cm denaturing polyacrylamide gel for use with the ABI PRISM® 377 DNA Sequencer. Low-fluorescence glass plates are recommended and can be obtained from the instrument manufacturer.

1. Thoroughly clean glass plates with hot water and a 1% Liqui-Nox® solution or another dilute laboratory detergent solution. Rinse extremely well using deionized water. Allow glass plates to air-dry in a dust-free environment.
2. Assemble glass plates by placing 0.2mm side gel spacers between the front and rear glass plates. Hold plates together using binder clamps (four clamps on each side). Place the assembly horizontally on a test tube rack or similar support.
3. Prepare a 5% Long Ranger® acrylamide gel (total of 50ml) by combining the reagents listed in Table 2. Stir the solution until the urea has dissolved.

Table 2. Preparation of a 5% Long Ranger® Polyacrylamide Gel.

Component	5% Gel	Final Concentration
urea	18g	6M
deionized water	26ml	-
10X TBE	5ml	1X
50% Long Ranger® gel solution	5ml	5%
total volume	50ml	

Note: Long Ranger Singel® Packs can be used.

4. Filter the acrylamide solution through a 0.2 micron filter (e.g., Nalgene® tissue culture filter), and degas for 5 minutes.
5. Add 35µl of TEMED and 250µl of fresh 10% ammonium persulfate to the 50ml of acrylamide solution, and mix gently.
6. Using a disposable 60cc syringe, pour the gel by starting at the well end of the plates and carefully injecting the acrylamide between the horizontal glass plates. Allow the solution to fill the top width of the plates. While maintaining a constant flow of solution, gently tap the glass plates to assist the movement of solution to the bottom of the plates.
7. Insert a 36-well sharktooth comb or 34-well squaretooth comb between the glass plates. Sharktooth combs with 64 or 96 wells also can be used.

Note: The gel can be stored overnight by placing a paper towel saturated with deionized water around the top and bottom and covering with plastic wrap to prevent the gel from drying out. Crystallization of the urea will destroy the gel.

8. Secure the comb with three evenly spaced clamps.
9. Keep the remaining acrylamide solution as a polymerization control.
10. Allow polymerization to proceed for >2 hours. Check the polymerization control to be sure that polymerization has occurred.

5.A. Detection of Matrix Fragments Using the ABI PRISM® 377 DNA Sequencer (continued)

Instrument Preparation

1. Open the ABI PRISM® 377 Data Collection Software.
2. Prepare a sample sheet as described in the *GeneScan® Analysis Software User's Manual*. Enter the appropriate sample information in the Sample Info column.
3. Create a new GeneScan® run, and use the following settings:

Plate Check Module:	Plate Check A
PreRun Module:	PR GS 36A-2400
Run Module:	GS 36A-2400
Collect Time:	3 hours
Well-to-Read Distance:	36cm
4. Select the appropriate sample sheet and comb selection using the pull-down menus.
5. Select "none" for the gel matrix file.

Gel Prerun

1. Remove the clamps from the polymerized acrylamide gel. If necessary, clean any excess acrylamide from the glass plates with paper towels saturated with deionized water.
2. Shave any excess polyacrylamide away from the comb, and remove the comb. If using a sharktooth comb, carefully insert the sharktooth comb teeth into the gel approximately 1–2mm.
3. Position the gel/glass plate unit in the 377 cassette.
4. Secure the cassette in the instrument, and perform a plate check as recommended in the *ABI PRISM® 377 DNA Sequencer User's Manual*. If the horizontal line graph is not flat, remove the cassette, clean the plate surface and repeat plate check.
5. Add 1X TBE buffer to the top and bottom buffer chambers of the instrument.
6. Using a 30cc syringe filled with buffer, remove any air bubbles and unpolymerized acrylamide from the well area of the gel, and place the lid on the upper buffer chamber. Using a syringe with a bent 18-gauge needle, remove any air bubbles from the bottom of the gel.
7. Attach the heating plate, connect the water tubing, attach all electrodes, close the instrument door, and click on the PreRun button. Allow the gel to prerun for 15–20 minutes or until the gel temperature is at least 40°C. Open the status window to monitor the gel temperature.
8. Prepare the matrix standards during the gel prerun.

Sample Preparation and Loading

1. Combine 1.5µl of each matrix standard with 1.5µl of Blue Dextran Loading Solution.
2. Denature each sample for 3 minutes at 95°C, and immediately chill on crushed ice or in an ice-water bath for 3 minutes. Denature samples just prior to loading the gel.
Note: Instrument detection limits vary; therefore, the amount of product mixed with loading cocktail may need to be increased or decreased.
3. After the 15- to 20-minute prerun, pause the instrument by selecting "Pause". When the prerun is paused, the water will continue to circulate to keep the gel warm during the sample loading.
4. Use a 30cc syringe filled with buffer to flush the urea from the well area.
5. Load 1.5µl of each denatured sample into the respective wells.
6. Place the lid on the upper buffer chamber, and close the instrument door.

Gel Electrophoresis and Detection

1. After loading, select "Cancel" to stop the prerun. Make sure that the run time is set at 3 hours, then select "Run" to begin electrophoresis.
2. Monitor electrophoresis by observing the gel image and status windows.
3. Allow electrophoresis to proceed for 3 hours. The largest fragment will have migrated past the laser.
4. Track and extract the gel lanes.

Matrix Generation for the ABI PRISM® 377 DNA Sequencer

1. Open the GeneScan® project.
2. Review the raw data from the individual matrix samples. Highlight the sample file name, then go to the Sample menu and select "raw data". Move the cursor beyond the primer peak so the crosshair is on a flat portion of the baseline. Record the X value number shown at the bottom of the window. Select an area for matrix generation. For optimal results, use as many peaks as possible. See Figure 4.
3. In the File menu, select "New", then click on the matrix icon. The Points field should have the default value of 100,000. Click on the dye color for each matrix, and indicate the sample file that corresponds to that dye. Enter the recorded X value from Step 2 in the Start At field.

<u>Dye Color</u>	<u>Corresponding Matrix</u>	<u>"Start At" Value</u>
Blue	Fluorescein Matrix	
Green	JOE Matrix	
Yellow	TMR Matrix	
Red	CXR Matrix	

5.A. Detection of Matrix Fragments Using the ABI PRISM® 377 DNA Sequencer (continued)

4. Select "OK", and the matrix file will be generated.
5. Save the matrix file in the Matrix Standards folder located in the GeneScan® folder. A copy of the matrix file should be stored in the ABI folder located in the system folder.
6. A new matrix can be applied to previously run samples by highlighting the sample in the GeneScan® project. In the Sample menu, select "Install new matrix", highlight the new matrix and select "Open". The new matrix will be applied to the sample file, and the samples can be analyzed using the new matrix.

Reuse of Glass Plates


Separate the glass plates, and discard the gel. Clean glass plates with hot water and a detergent such as 1% Liqui-Nox® detergent. Rinse extremely well with deionized water, and allow plates to air-dry. Do not scrape plates with abrasive materials during this process.


Gel extrusion (i.e., gel expands into the comb during a run) can occur due to a buildup of residue. If this occurs, soak the plates in 2N HCl for 15 minutes, then rinse thoroughly.

5.B. Detection of Matrix Fragments Using the ABI PRISM® 310 Genetic Analyzer and GeneScan® Software

Materials to Be Supplied by the User

- dry heating block, water bath or thermal cycler
- crushed ice or ice-water bath
- 310 capillaries, 47cm × 50µm
- performance optimized polymer 4 (POP-4™ polymer)
- glass syringe (1ml)
- sample tubes and septa
- aerosol-resistant pipette tips
- 10X genetic analyzer buffer
- Hi-Di™ formamide (Applied Biosystems Cat.# 4311320)

 The quality of formamide is critical. Use Hi-Di™ formamide. Freeze formamide in aliquots at -20°C. Multiple freeze-thaw cycles or long-term storage at 4°C may cause breakdown of formamide. Poor-quality formamide may contain ions that compete with DNA during injection, which results in lower peak heights and reduced sensitivity. A longer injection time may not increase the signal.

 Formamide is an irritant and a teratogen; avoid inhalation and contact with skin. Read the warning label, and take the necessary precautions when handling this substance. Always wear gloves and safety glasses when working with formamide.

Instrument Preparation

1. Refer to the *ABI PRISM® 310 Genetic Analyzer User's Manual* for instructions on cleaning the pump block, installing the capillary, calibrating the autosampler and adding polymer to the syringe.
2. Open the ABI PRISM® 310 Data Collection Software.
3. Prepare a GeneScan® sample sheet as described in the *ABI PRISM® 310 Genetic Analyzer User's Manual*. Enter the appropriate sample information in the Sample Info column. Create a new GeneScan® injection list. Select the appropriate sample sheet using the pull-down menu.
4. Select the "GS STR POP4 (1ml) A" Module using the pull-down menu. Change the run time to 30 minutes, and keep the settings for the remaining parameters as shown below:

Inj. Secs:	5
Inj. kV:	15.0
Run kV:	15.0
Run °C:	60
Run Time (minutes):	30

Note: The injection time may need to be optimized for individual instruments.
5. Select "none" for the matrix file.

Sample Preparation

1. Thaw the matrix standards. For each matrix standard, vortex the tube for 5–10 seconds to mix, then add 2µl of matrix standard to 25µl of Hi-Di™ formamide or water.
2. Denature each sample for 3 minutes at 95°C, and immediately chill on crushed ice or in an ice-water bath for 3 minutes. Denature samples just prior to loading.
3. Place tubes in the appropriate autosampler tray (48-tube or 96-tube).
4. Place the autosampler tray in the instrument, and close the instrument doors.

Capillary Electrophoresis and Detection

1. After loading the sample tray and closing the doors, select "Run" to start the capillary electrophoresis system.
2. Monitor the electrophoresis by observing the raw data and status windows.

Each sample will take approximately 40 minutes for syringe pumping, sample injection and electrophoresis.

5.B. Detection of Matrix Fragments Using the ABI PRISM® 310 Genetic Analyzer and GeneScan® Software (continued)

Matrix Generation for the ABI PRISM® 310 Genetic Analyzer

1. Open the GeneScan® project.
2. Review the raw data from the individual matrix standards. Highlight the sample file name, then go to the Sample menu and select “raw data”. Move the cursor beyond the primer peak, so the crosshair is on a flat portion of the baseline. Record the X value number shown at the bottom of the window. See Figure 4. Select an area for matrix generation. For optimal results, use as many peaks as possible.
3. In the File menu, select “New,” then click on the Matrix icon. The “points” field should have the default value of 100,000. Click on the dye color for each matrix, and indicate the sample file that corresponds to that dye. Enter the X value recorded from Step 2 in the “Start At” field.

Dye Color	Corresponding Matrix	“Start At” Value
Blue	Fluorescein Matrix	
Green	JOE Matrix	
Yellow	TMR Matrix	
Red	CXR Matrix	

4. Select “OK”, and the matrix file will be generated.
5. Save the matrix file in the Matrix Standards folder located in the GeneScan® folder. For the Macintosh® version of the software, a copy of the matrix file is automatically saved in the GS Matrix folder. For the Windows NT® version of the software, store a copy of the matrix file in the Matrix folder at: C:\appliedbio\shared\analysis\sizecaller\matrix.

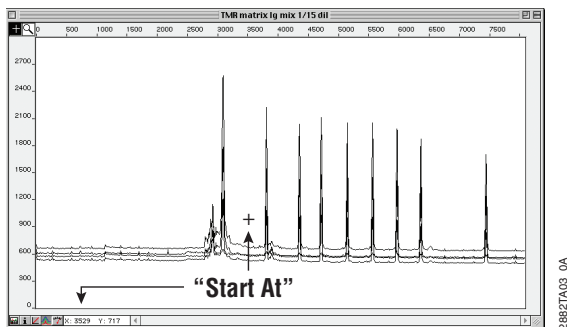


Figure 4. TMR matrix raw data. The TMR matrix standard was analyzed using an ABI PRISM® 310 Genetic Analyzer. GeneScan® analysis software was used to view the “raw data” (in the Sample menu). The cursor was placed on the baseline, and the “Start At” value of 3529 was determined using the readout in the lower left corner of the window.

6. A new matrix can be applied to previously run samples by highlighting the sample in the GeneScan® project. In the Sample menu, select “Install new matrix”, highlight the new matrix and select “Open”. The new matrix will be applied to the sample file, and the samples can be analyzed using the new matrix.

5.C. Composition of Buffers and Solutions

10% ammonium persulfate

Add 0.05g of ammonium persulfate (Cat.# V3131) to 500µl of deionized water. Use 250µl of 10% ammonium persulfate for each 50ml of acrylamide gel solution.

Blue Dextran Loading Solution

88.25% formamide
 15mg/ml blue dextran
 4.1mM EDTA (pH 8.0)

TBE 10X buffer

107.8g Tris base
 7.44g EDTA
 (Na₂EDTA • 2H₂O)
 ~55.0g boric acid

Dissolve Tris base and EDTA in 800ml of deionized water. Slowly add boric acid, and monitor the pH until the desired pH of 8.3 is obtained. Bring the volume to 1 liter with deionized water.

6. Related Products

Product	Size	Cat.#
PowerPlex® Matrix Standards, 3100/3130	25µl (each dye)	DG4650
PowerPlex® 16 System	100 reactions	DC6531
	400 reactions	DC6530
PowerPlex® 16 HS System	100 reactions	DC2101
	400 reactions	DC2100
PowerPlex® Y System	50 reactions	DC6761
	200 reactions	DC6760
PowerPlex® S5 System	100 reactions	DC6951
	400 reactions	DC6950
PowerPlex® 1.2 System	100 reactions	DC6101
PowerPlex® ES System	100 reactions	DC6731
	400 reactions	DC6730

Not for Medical Diagnostic Use.

6. Related Products (continued)

Accessory Components

<u>Product</u>	<u>Size</u>	<u>Cat.#</u>
Internal Lane Standard 600*	150µl	DG1071
Gold ST★R 10X Buffer	1.2ml	DM2411
Nuclease-Free Water*	50ml	P1193

*For Laboratory Use.

© 2006, 2010 Promega Corporation. All Rights Reserved.

GenePrint and *PowerPlex* are registered trademarks of Promega Corporation.

ABI PRISM, GeneMapper and GeneScan are registered trademarks of Applied Biosystems Corporation. Hi-Di and POP-4 are trademarks of Applied Biosystems Corporation. Liqui-Nox is a registered trademark of Alconox, Inc. Long Ranger and Long Ranger Singel are registered trademarks of Lonza BioProducts. Macintosh is a registered trademark of Apple Computer, Inc. Nalgene is a registered trademark of Nalge Nunc International. Windows NT is a registered trademark of Microsoft Corporation.

Products may be covered by pending or issued patents or may have certain limitations. Please visit our Web site for more information.

All prices and specifications are subject to change without prior notice.

Product claims are subject to change. Please contact Promega Technical Services or access the Promega online catalog for the most up-to-date information on Promega products.