

## Product Contents

### Anti-pT<sup>183</sup> MAPK pAb, Rabbit:

Part No.	Size
V808A	50µl

**Description:** Anti-pT<sup>183</sup> MAPK pAb is a polyclonal antibody purified from rabbit serum. The antibody is affinity-purified using a monophosphorylated peptide (mono pT peptide) corresponding to a monophospho-threonine form of MAP kinase enzymes 1 and 2.

**Immunogen:** Mono pT peptide.

**Storage Buffer:** Anti-pT<sup>183</sup> MAPK pAb is supplied in Dulbecco's PBS.

**Suggested Working Dilution:** 1:4,000 for Western blots.

**Storage Conditions:** For long-term storage, store the undiluted antibody at -20°C. For daily or weekly use, store in aliquots at -20°C. Avoid multiple freeze-thaw cycles and exposure to frequent temperature changes. The performance of this product is guaranteed for at least six months from the date of purchase if stored and handled properly.

**Usage Note:** For Western blotting, the suggested working dilution of Anti-pT<sup>183</sup> MAPK pAb is 1:4,000. Please refer to page 2 of this Promega Product Information sheet for an example of a Western analysis protocol.

Part# 9PIV808  
Revised 6/05



## Quality Control Assays

**Western Blotting:** Western blot analysis is performed using Anti-pT<sup>183</sup> MAPK pAb at a 1:4,000 dilution, along with Donkey Anti-Rabbit IgG (H+L), AP, Anti-ACTIVE<sup>®</sup> Qualified (Cat.# V7971) at a 1:10,000 dilution and Western Blue<sup>®</sup> Stabilized Substrate for Alkaline Phosphatase (Cat.# S3841).

**Sensitivity:** Using Western blot analysis, the antibody detects MAPK enzyme bands at 42/44kDa in 2µg of PC12 cell extract, NGF-treated.

Using dot blot analysis, the antibody detects 50ng of mono pT peptide and 50ng of dually phosphorylated peptide corresponding to a dually phosphorylated form of MAP kinase enzymes 1 and 2.

**Specificity:** Using Western blot analysis, the intensity of the MAPK enzyme bands at 42/44kDa in 2µg of PC12 cell extract, untreated, is much less than those in 2µg of PC12 cell extract, NGF-treated. At higher amounts of cell extract or conjugate, an extra band is seen between 64kDa and 96kDa. The identity of the protein in this band is not known.

Using dot blot analysis, the signal obtained with 1µg of monophosphorylated pY peptide (corresponding to a monophosphotyrosine form of MAP kinase enzymes 1 and 2) or 1µg of nonphosphorylated peptide is less than that obtained with 50ng of mono pT peptide.



**Promega**

#### Promega Corporation

2800 Woods Hollow Road	
Madison, WI 53711-5399	USA
Telephone	608-274-4330
Toll Free	800-356-9526
Fax	608-277-2516
Internet	<a href="http://www.promega.com">www.promega.com</a>

#### PRODUCT USE LIMITATIONS, WARRANTY, DISCLAIMER

Promega manufactures products for a number of intended uses. Please refer to the product label for the intended use statements for specific products. Promega products contain chemicals which may be harmful if misused. Due care should be exercised with all Promega products to prevent direct human contact.

Each Promega product is shipped with documentation stating specifications and other technical information. Promega products are warranted to meet or exceed the stated specifications. Promega's sole obligation and the customer's sole remedy is limited to replacement of products free of charge in the event products fail to perform as warranted. Promega makes no other warranty of any kind whatsoever, and SPECIFICALLY DISCLAIMS AND EXCLUDES ALL OTHER WARRANTIES OF ANY KIND OR NATURE WHATSOEVER, DIRECTLY OR INDIRECTLY, EXPRESS OR IMPLIED, INCLUDING, WITHOUT LIMITATION, AS TO THE SUITABILITY, PRODUCTIVITY, DURABILITY, FITNESS FOR A PARTICULAR PURPOSE OR USE, MERCHANTABILITY, CONDITION, OR ANY OTHER MATTER WITH RESPECT TO PROMEGA PRODUCTS. In no event shall Promega be liable for claims for any other damages, whether direct, incidental, foreseeable, consequential, or special (including but not limited to loss of use, revenue or profit), whether based upon warranty, contract, tort (including negligence) or strict liability arising in connection with the sale or the failure of Promega products to perform in accordance with the stated specifications.

© 1999, 2005 Promega Corporation. All Rights Reserved.

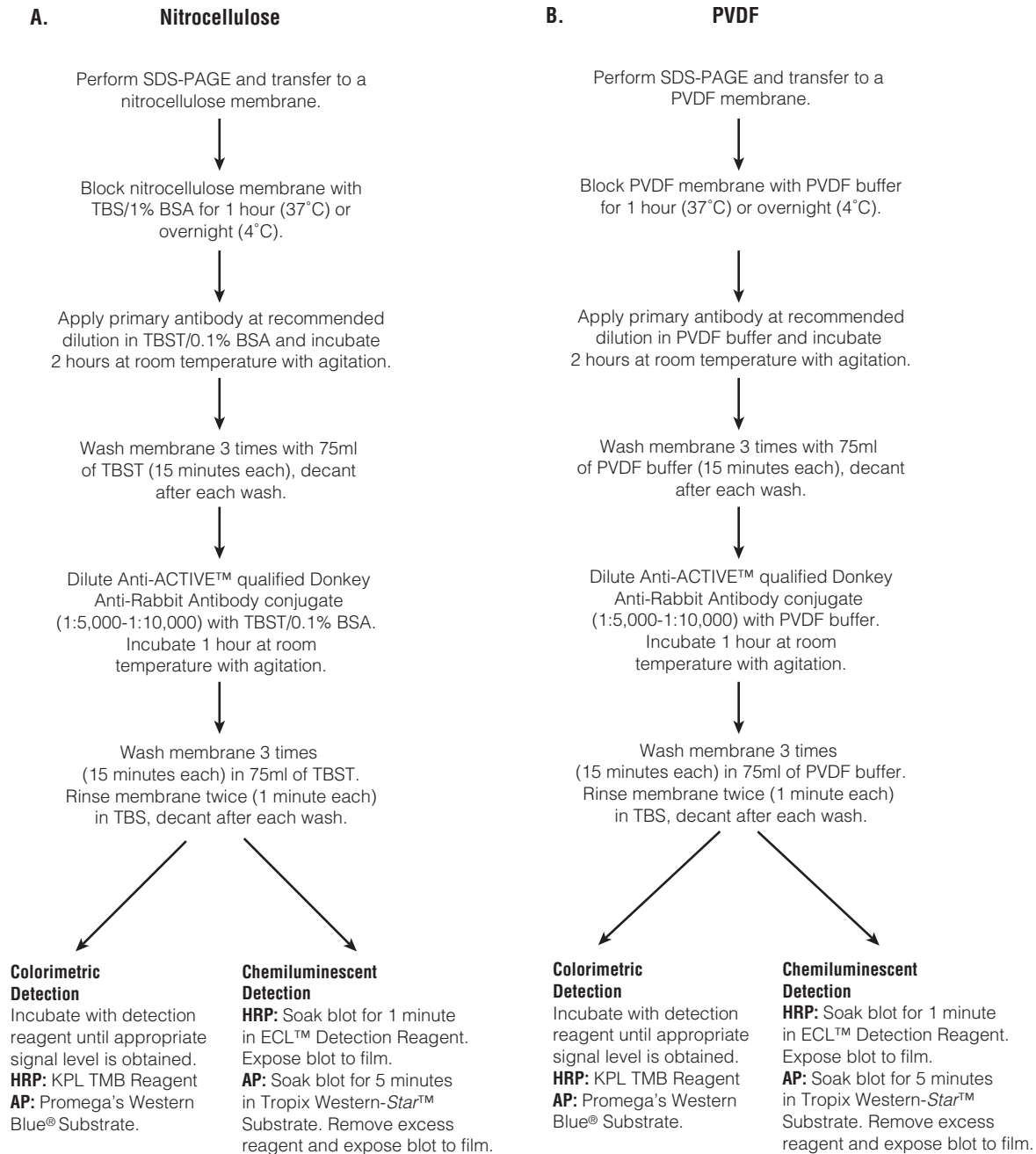
Anti-ACTIVE and Western Blue are registered trademarks of Promega Corporation.

ECL is a trademark of Amersham Biosciences Ltd. I-Block and Western-Star are trademarks of Applied Biosystems. Tween is a registered trademark of ICI Americas, Inc.

All specifications are subject to change without prior notice.

Product claims are subject to change. Please contact Promega Technical Services or access the Promega online catalog for the most up-to-date information on Promega products.

Part# 9PIV808  
Printed in USA. Revised 6/05



**Schematic diagram illustrating the use of nitrocellulose and PVDF membranes in Western blot analysis. Note:** It may be necessary to empirically determine the optimal dilutions of primary and secondary antibodies for your system. Use of secondary antibodies other than those available from Promega may require additional optimization. KPL is an abbreviation for Kirkegaard and Perry Laboratories. TBST = Tris-buffered saline with 0.05% Tween® 20. PVDF buffer is TBS with 0.2% I-Block™ and 0.1% Tween® 20. I-Block™ (Tropix) is a highly purified form of casein.