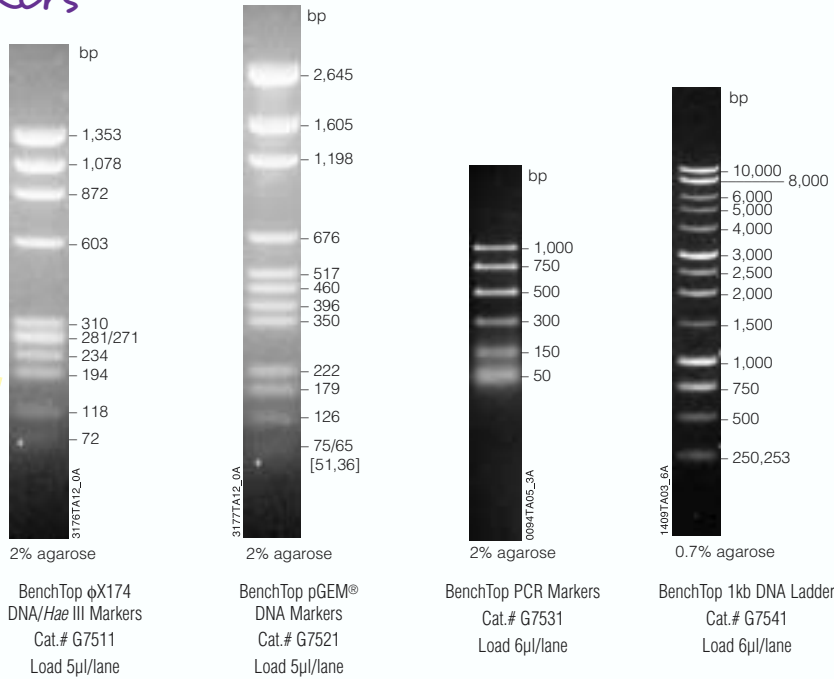


DNA Analysis Tools

Benchtop DNA Markers

Ready-to-load markers premixed with Promega's Blue/Orange Loading Dye. The markers are stable at room temperature so you can store them on your bench top!

Ready-to-load markers you store on your bench top



Ladders and Digest Markers

Promega's ladders and digest markers allow you to choose the markers you want, mix and load as much as you wish. Each marker comes with a tube of Blue/Orange Loading Dye, 6X for both the marker and your samples.

