

TECHNICAL MANUAL

# NanoBRET™ Target Engagement Intracellular Kinase Assay, Adherent Format

Instructions for Use of Products

**N2500, N2501, N2530, N2520, N2521, N2540, N2600, N2601, N2810, N2620,  
N2621, N2820, N2630, N2631, N2830, N2640, N2641, N2840, N2650, N2651,  
N2850, NF1001 and NF1200**

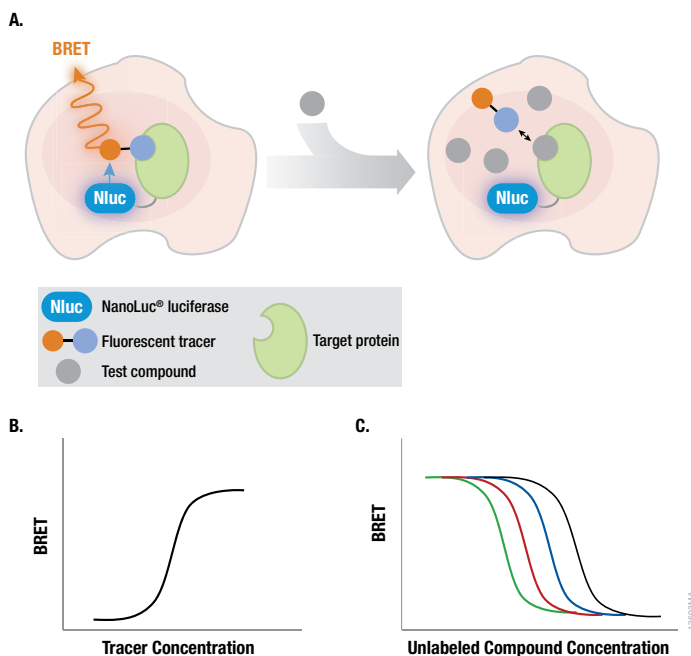
# NanoBRET™ Target Engagement Intracellular Kinase Assay, Adherent Format

All technical literature is available at: [www.promega.com/protocols/](http://www.promega.com/protocols/)  
 Visit the web site to verify that you are using the most current version of this Technical Manual.  
 E-mail Promega Technical Services if you have questions on use of this system: [techserv@promega.com](mailto:techserv@promega.com)

<b>1.</b>	Description .....	<b>2</b>
<b>2.</b>	Product Components and Storage Conditions .....	<b>5</b>
<b>3.</b>	Before You Begin .....	<b>10</b>
3.A.	Preparing NanoBRET™ Expression Vectors .....	<b>10</b>
3.B.	Instrument Requirements and Setup .....	<b>11</b>
<b>4.</b>	NanoBRET™ TE Intracellular Kinase Assay Protocols .....	<b>12</b>
4.A.	General Protocol for ADH Format Assays without Regulator Co-expression .....	<b>12</b>
4.B.	Composition of Buffers and Solutions .....	<b>13</b>
4.C.	Transient Transfection of HEK293 Cells with Kinase-NanoLuc® Fusion Vector DNA .....	<b>13</b>
4.D.	Preparing NanoBRET™ Tracer Reagent and Adding to Cells .....	<b>14</b>
4.E.	Adding Test Compounds .....	<b>14</b>
4.F.	NanoBRET™ Assay Protocol .....	<b>14</b>
4.G.	Determining BRET Ratio .....	<b>15</b>
4.H.	BRET Data Generated for Control Kinases using the ADH Format Assay Protocol .....	<b>16</b>
4.I.	General Protocol for ADH Assays that Require Regulator Protein Co-expression .....	<b>18</b>
4.J.	BRET Data for a Kinase-NanoLuc® Fusion Using a Regulatory Expression Vector with Tracer K-3 .....	<b>20</b>
<b>5.</b>	Achieving Quantitative Analysis of Test Compound Affinity .....	<b>22</b>
<b>6.</b>	Troubleshooting .....	<b>24</b>
<b>7.</b>	Appendix .....	<b>26</b>
7.A.	Representative Target Engagement Data for Kinase-NanoLuc® Fusions and Assay Capabilities .....	<b>26</b>
7.B.	Comparable Compound Pharmacology with Different Tracers .....	<b>30</b>
7.C.	Modifications to Tracer Preparation Workflow to Increase the Dispense Volume .....	<b>31</b>
7.D.	Achieving Adequate Plate Mixing for 96-Well and 384-Well Formats .....	<b>31</b>
7.E.	Performing NanoBRET™ TE Assays in Alternative Plate Formats (ADH vs NBS) .....	<b>32</b>
7.F.	Preparing Stable Cell Lines Expressing NanoLuc® Fusion Proteins .....	<b>34</b>
7.G.	Extinction Coefficient of NanoBRET™ Tracers .....	<b>34</b>
7.H.	References .....	<b>34</b>
7.I.	Related Products .....	<b>35</b>
<b>8.</b>	Summary of Changes .....	<b>36</b>

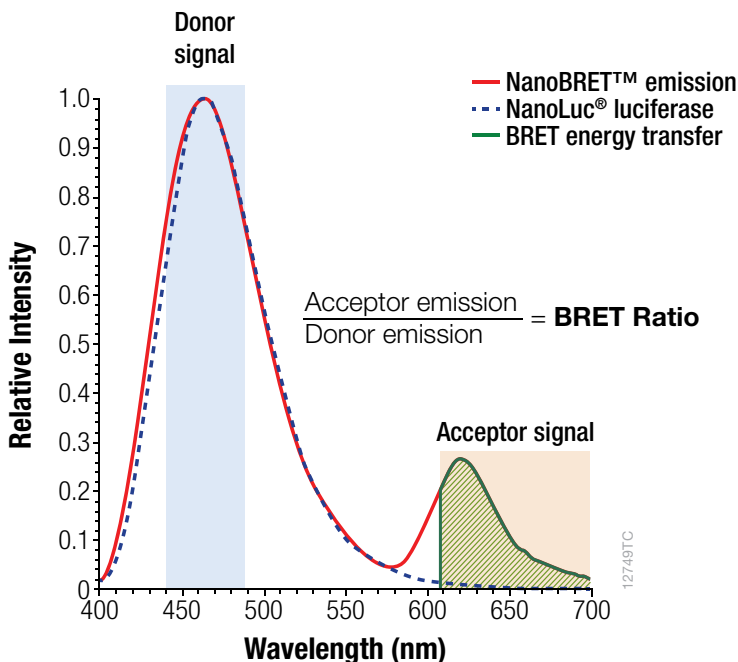
## 1. Description

The NanoBRET™ Target Engagement (TE) Assay<sup>(a-1)</sup> (Figure 1) measures compound binding at select target proteins within intact cells (1). The NanoBRET™ TE Assay has been applied successfully to study multiple target classes (2). Here, we describe the NanoBRET™ TE Intracellular Kinase Assay, which measures compound binding to a kinase protein fused to NanoLuc® luciferase (3). As the largest group of enzymes in the human proteome, the kinases are essential to myriad cellular processes from regulation of cell physiology to signal transduction. The NanoBRET™ TE Assay allows for the measurement of compound binding in the presence of cellular factors that are known to impact target engagement potency. Specifically, it allows the quantitation of apparent intracellular affinity for a test compound to a diverse set of full-length protein kinases expressed inside living cells.



**Figure 1. Illustration of the NanoBRET™ TE Assay. Panel A.** Compound engagement is measured in a competitive format using a cell-permeable fluorescent NanoBRET™ tracer. Binding of the test compound results in a loss of NanoBRET™ signal between the target protein and the tracer inside intact cells. **Panel B.** The affinity of the NanoBRET™ tracer is determined for each target protein. For analysis of target engagement by a test compound, cells are treated with a fixed concentration of NanoBRET™ tracer that is near the  $EC_{50}$  value of the NanoBRET™ tracer dose response curve. **Panel C.** To determine test compound affinity, cells are titrated with varying concentrations of the test compound in the presence of a fixed concentration ( $EC_{50} - EC_{80}$ ) of tracer.

This target engagement assay is based on the NanoBRET™ System, an energy transfer technique designed to measure molecular proximity in living cells (1).



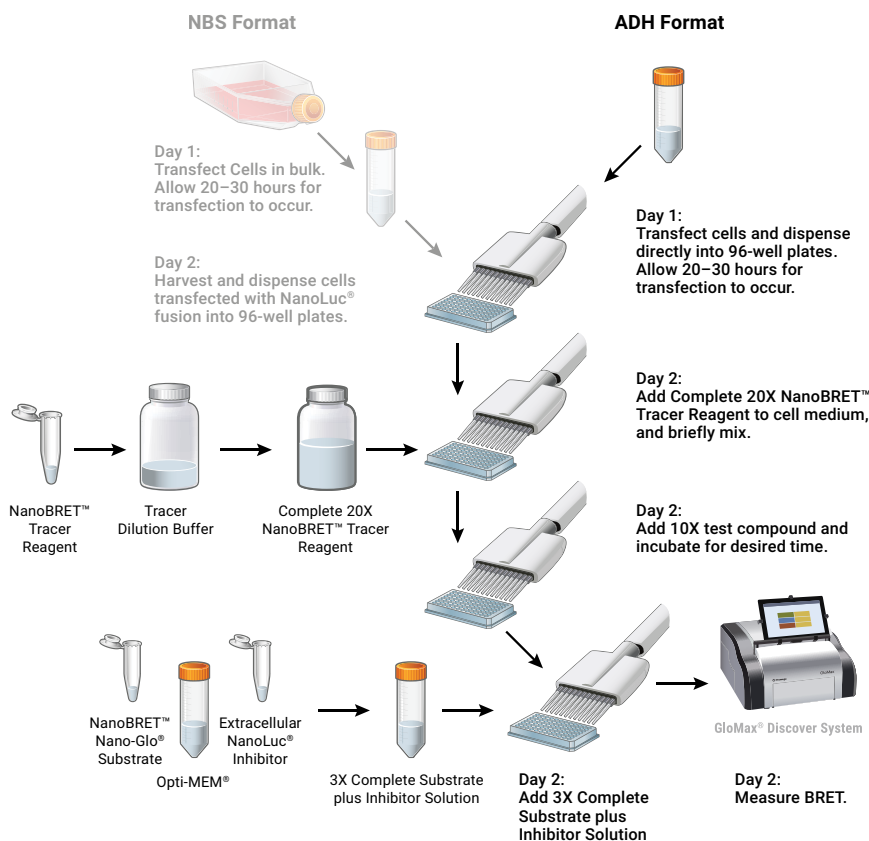
**Figure 2. Spectral separation of the NanoLuc® emission (460nm) and fluorescent tracer emission (618nm), and calculation of the NanoBRET™ ratio.**

The NanoBRET™ TE Assay uses four key components: an expressed cellular target protein that is fused to the bright NanoLuc® luciferase; a cell-permeable fluorescent NanoBRET™ tracer that specifically binds to the target protein; a substrate for NanoLuc® luciferase; and an extracellular inhibitor for NanoLuc® luciferase. Bioluminescence resonance energy transfer (BRET) is achieved through a nonradiative transfer of the luminescent energy from NanoLuc® luciferase to the fluorescent tracer that is bound to the target protein-NanoLuc® fusion (Figure 1, Panels A and B). Compounds that are applied to the cells and specifically engage the intracellular target protein-NanoLuc® fusion will result in a dose-dependent decrease in BRET (Figure 1, Panels A and C) by competition with a fixed concentration of NanoBRET™ Tracer. To ensure accurate assessment of intracellular target engagement, an extracellular NanoLuc® inhibitor is used to mitigate any NanoLuc® signal that may arise from cells compromised during handling, while not adversely affecting NanoLuc® luciferase expressed within healthy living cells.

The NanoBRET™ TE Assays have been optimized to use a blue-shifted NanoLuc® donor and a red-shifted fluorescent tracer acceptor (NanoBRET™ 590) that have minimal spectral overlap within the assay (Figure 2). This results in an optimized signal:background ratio and hence an optimized NanoBRET™ ratio.

## 1. Description (continued)

This latest generation of the NanoBRET™ TE Intracellular Kinase Assay provides an expanded portfolio of live-cell kinase assays, as well as a new and preferred adherent assay format (ADH, Figure 3). The ADH format is compatible with tissue culture-treated plates and allows measurement of TE in adhered cells, which may be more comparable to other cell-based phenotypic assays that utilize adhered cells. Compared to the legacy format that used nonbinding surface plates (NBS format), this new adaptation also creates a more efficient workflow (Figure 3). The new protocol in the ADH format allows the cells to be seeded into assay plates on day 1, enabling the user to proceed directly to tracer and test compound addition on day 2. The ADH format is compatible with legacy NanoBRET™ assays K-4 and K-5, as well as the new NanoBRET™ assays (K-3, K-8, K-9, K-10, K-11 and K-12), and enables assays for over 250 unique kinases.



**Figure 3. Overview of the NanoBRET™ Target Engagement Intracellular Assay.** This technical manual describes the adherent (ADH) format of the assay, compared with the legacy nonbinding surface (NBS) format.

## 2. Product Components and Storage Conditions

### NanoBRET™ TE Intracellular Kinase Assay

	K-3			K-4		
<i>Assay Size, 96-well</i>	100	1,000	10,000	100	1,000	10,000
<i>Assay Size, 384-well</i>	250	2,500	25,000	250	2,500	25,000
<i>Cat. #</i>	N2600	N2601	N2810	N2520	N2521	N2540
Components:						
Control Kinase NanoLuc® fusion vector	20µg NanoLuc®-PIK3CA Fusion Vector	20µg NanoLuc®-PIK3CA Fusion Vector	Not Included	20µg DDR1-NanoLuc® Fusion Vector	20µg DDR1-NanoLuc® Fusion Vector	Not Included
Regulatory vector	20µg PIK3R1 Expression Vector	20µg PIK3R1 Expression Vector	Not Included	N/A	N/A	N/A
Transfection Carrier DNA	20µg	100µg	Not Included	20µg	100µg	Not Included
NanoBRET™ Tracer, 400µM	K-3 30µl	K-3 300µl	K-3 10 × 300µl	K-4 30µl	K-4 300µl	K-4 10 × 300µl
Tracer Dilution Buffer	5ml	5ml	50ml	5ml	5ml	50ml
NanoBRET™ Nano-Glo® Substrate	50µl	330µl	3.3ml	50µl	330µl	3.3ml
Extracellular NanoLuc® Inhibitor	17µl	110µl	1.1ml	17µl	110µl	1.1ml

**2. Product Components and Storage Conditions (continued)**

**NanoBRET™ TE  
Intracellular Kinase  
Assay**

	<b>K-5</b>			<b>K-8</b>		
<i>Assay Size, 96-well</i>	100	1,000	10,000	100	1,000	10,000
<i>Assay Size, 384-well</i>	250	2,500	25,000	250	2,500	25,000
<i>Cat. #</i>	N2500	N2501	N2530	N2620	N2621	N2820
Components:						
Control Kinase NanoLuc® fusion vector	20µg BTK-NanoLuc® Fusion Vector	20µg BTK-NanoLuc® Fusion Vector	Not Included	20µg NanoLuc®-GSK3B Fusion Vector	20µg NanoLuc®-GSK3B Fusion Vector	Not Included
Regulatory vector	N/A	N/A	N/A	N/A	N/A	N/A
Transfection Carrier DNA	20µg	100µg	Not Included	20µg	100µg	Not Included
NanoBRET™ Tracer, 400µM	K-5 55µl	K-5 550µl	K-5 10 × 550µl	K-8 30µl	K-8 300µl	K-8 10 × 300µl
Tracer Dilution Buffer	5ml	5ml	50ml	5ml	5ml	50ml
NanoBRET™ Nano-Glo® Substrate	50µl	330µl	3.3ml	50µl	330µl	3.3ml
Extracellular NanoLuc® Inhibitor	17µl	110µl	1.1ml	17µl	110µl	1.1ml

**NanoBRET™ TE  
Intracellular Kinase  
Assay**

	<b>K-9</b>			<b>K-10</b>		
<i>Assay Size, 96-well</i>	100	1,000	10,000	100	1,000	10,000
<i>Assay Size, 384-well</i>	250	2,500	25,000	250	2,500	25,000
<i>Cat. #</i>	N2630	N2631	N2830	N2640	N2641	N2840
Components:						
Control Kinase NanoLuc® fusion vector	20µg NanoLuc®-PLK2 Fusion Vector	20µg NanoLuc®-PLK2 Fusion Vector	Not Included	20µg LIMK1-NanoLuc® Fusion Vector	20µg LIMK1-NanoLuc® Fusion Vector	Not Included
Regulatory vector	N/A	N/A	N/A	N/A	N/A	N/A
Transfection Carrier DNA	20µg	100µg	Not Included	20µg	100µg	Not Included
NanoBRET™ Tracer, 400µM	K-9 30µl	K-9 300µl	K-9 10 × 300µl	K-10 30µl	K-10 300µl	K-10 10 × 300µl
Tracer Dilution Buffer	5ml	5ml	50ml	5ml	5ml	50ml
NanoBRET™ Nano-Glo® Substrate	50µl	330µl	3.3ml	50µl	330µl	3.3ml
Extracellular NanoLuc® Inhibitor	17µl	110µl	1.1ml	17µl	110µl	1.1ml



**2. Product Components and Storage Conditions (continued)**

**NanoBRET™ TE  
Intracellular Kinase  
Assay**

	<b>K-11</b>			<b>K-12</b>	
<i>Assay Size, 96-well</i>	100	1,000	10,000	1,000	10,000
<i>Assay Size, 384-well</i>	250	2,500	25,000	2,500	25,000
<i>Cat.#</i>	N2650	N2651	N2850	NF1001	NF1200
Components:					
Control Kinase NanoLuc® fusion vector	20µg ACVR1-NanoLuc® Fusion Vector	20µg ACVR1-NanoLuc® Fusion Vector	Not Included	20µg NanoLuc®- CDK7 Fusion Vector	Not Included
Regulatory vector	N/A	N/A	N/A	N/A	N/A
Transfection Carrier DNA	20µg	100µg	Not Included	100µg	Not Included
NanoBRET™ Tracer, 400µM	K-11 30µl	K-11 300µl	K-11 10 × 300µl	K-12 300µl	K-12 10 × 300µl
Tracer Dilution Buffer	5ml	5ml	50ml	5ml	50ml
NanoBRET™ Nano-Glo® Substrate	50µl	330µl	3.3ml	330µl	3.3ml
Extracellular NanoLuc® Inhibitor	17µl	110µl	1.1ml	110µl	1.1ml

**Storage Conditions:** Store the entire NanoBRET™ Intracellular Kinase Assay kits and NanoBRET™ Intracellular Kinase detection reagents at less than -65°C. Alternatively, store the NanoBRET™ Tracers at less than -65°C and all other components at -30°C to -10°C. Avoid multiple freeze-thaw cycles of the vector. We recommend aliquoting NanoBRET™ Tracer components and avoiding more than 5 freeze-thaw cycles. Store all NanoBRET™ Tracers, NanoBRET™ Nano-Glo® Substrate and Extracellular NanoLuc® Inhibitor protected from light.

**Available Separately**

PRODUCT	SIZE	CAT.#
<b>Intracellular TE Nano-Glo® Substrate/Inhibitor</b>	<b>100 assays</b>	<b>N2162</b>

Includes:

- 50µl NanoBRET™ Nano-Glo® Substrate
- 17µl Extracellular NanoLuc® Inhibitor

PRODUCT	SIZE	CAT.#
<b>Intracellular TE Nano-Glo® Substrate/Inhibitor</b>	<b>1,000 assays</b>	<b>N2160</b>

Includes:

- 330µl NanoBRET™ Nano-Glo® Substrate
- 110µl Extracellular NanoLuc® Inhibitor

PRODUCT	SIZE	CAT.#
<b>Intracellular TE Nano-Glo® Substrate/Inhibitor</b>	<b>10,000 assays</b>	<b>N2161</b>

Includes:

- 3.3ml NanoBRET™ Nano-Glo® Substrate
- 1.1ml Extracellular NanoLuc® Inhibitor

PRODUCT	SIZE	CAT.#
<b>Intracellular TE Nano-Glo® Vivazine™ Inhibitor</b>	<b>1,000 assays</b>	<b>N2200</b>

Includes:

- 1.65ml Nano-Glo® Vivazine™ Substrate
- 110µl Extracellular NanoLuc® Inhibitor

PRODUCT	SIZE	CAT.#
<b>Intracellular TE Nano-Glo® Vivazine™ Inhibitor</b>	<b>10,000 assays</b>	<b>N2201</b>

Includes:

- 10 × 1.65ml Nano-Glo® Vivazine™ Substrate
- 1.1ml Extracellular NanoLuc® Inhibitor

## 2. Product Components and Storage Conditions (continued)

### Available Separately (continued)

PRODUCT	SIZE	CAT. #
NanoBRET™ TE Tracer K-3, 400µM	300µl	N2602
NanoBRET™ TE Tracer K-4, 400µM	300µl	N2492
NanoBRET™ TE Tracer K-5, 400µM	550µl	N2482
NanoBRET™ TE Tracer K-8, 400µM	300µl	N2622
NanoBRET™ TE Tracer K-9, 400µM	300µl	N2632
NanoBRET™ TE Tracer K-10, 400µM	300µl	N2642
NanoBRET™ TE Tracer K-11, 400µM	300µl	N2652
NanoBRET™ TE Tracer K-12, 400µM	300µl	NF1011
Tracer Dilution Buffer	50ml	N2191
Transfection Carrier DNA	5 × 20µg	E4881
	2 × 100µg	E4882
CC1 pan-Kinase Inhibitor	100µl	N2661

## 3. Before You Begin

### 3.A. Preparing NanoBRET™ Expression Vectors

The amount of each vector DNA provided with the system is sufficient for a limited number of experiments. We strongly recommend that each vector is further propagated as transfection-ready (i.e., low-endotoxin) DNA. Due to the apparent toxicity of some kinase gene sequences, we recommend the use of *E. coli* strain JM109 for propagation of kinase-NanoLuc® fusion vectors. Follow standard protocols for plasmid transformation into *E. coli* for archival storage, vector propagation and tissue-culture-grade DNA preparation.

For each vector, the kinase-NanoLuc® fusion protein or regulatory protein is constitutively expressed by a CMV promoter and includes a kanamycin expression cassette to select for the plasmid during bacterial propagation. For vector sequence information, visit: [www.promega.com/kinasevectors](http://www.promega.com/kinasevectors). We recommend resequencing the coding region after propagation to ensure fidelity of the kinase-NanoLuc® fusion.

Some kinase ORF sequences may be toxic to *E. coli*, and in these cases, vector propagation may be more challenging than expected. We have attempted to mitigate this problem by using low copy vectors, which frequently improves propagation efficiency. Even in low copy vectors, some kinase ORF sequences still may present a challenge. In these cases, scale up of the *E. coli* culture is advised to increase the plasmid yield. In our experience, one specific kinase vector in which propagation may be challenging is the NanoLuc®-DYRK1A Fusion Vector.

If challenges are encountered during vector propagation, contact the Promega Technical Services team for assistance.

### 3.B. Instrument Requirements and Setup

To perform NanoBRET™ TE Assays, a luminometer capable of sequentially measuring dual-wavelength windows is required. This is accomplished using filters; we recommend using a band pass (BP) filter for the donor signal and a long pass filter (LP) for the acceptor signal to maximize sensitivity.

- The NanoBRET™ bioluminescent donor emission occurs at 460nm. To measure this donor signal, we recommend a band pass (BP) filter that covers close to 460nm with a band pass range of 8–80nm. For example, a 450nm/BP80 will capture the 410nm to 490nm range.

**Note:** A BP filter is preferred for the donor signal measurement to selectively capture the signal peak and avoid measuring any acceptor peak bleed-through. However, a short pass (SP) filter that covers the 460nm area also can be used. This may result in an artificially large value for the donor signal and measuring the bleed-through into the acceptor peak, which could compress the ratio calculation and reduce the assay window.

- The NanoBRET™ acceptor peak emission occurs at approximately 590–610nm. To measure the acceptor signal, we recommend a long pass filter starting at 600–610nm.

Instruments capable of dual-luminescence measurements are either equipped with a filter selection or the filters can be purchased and added separately. For instruments using mirrors, select the luminescence mirror. An integration time of 0.2–1 second is typically sufficient. Ensure that the gain on the PMT is optimized to capture the highest donor signal without reaching instrument saturation.

Consult with your instrument manufacturer to determine if the proper filters are installed or for the steps needed to add filters to the luminometer. For example, a special holder or cube might be required for the filters to be mounted, and the shape and thickness may vary among instruments. We have experience with the following instruments and configurations:

1. The GloMax® Discover System (Cat.# GM3000) with preloaded filters for donor 450nm/8nm BP and acceptor 600nm LP. Select the preloaded BRET:NanoBRET™ 618 protocol from the Protocol menu.
2. BMG Labtech CLARIOstar® with preloaded filters for donor 450nm/80nm BP and acceptor 610nm LP
3. Thermo Varioskan® with filters obtained from Edmunds Optics, using donor 450nm CWL, 25mm diameter, 80nm FWHM, Interference Filter and acceptor 1 inch diameter, RG-610 Long Pass Filter.

Another instrument capable of measuring dual luminescence is the PerkinElmer EnVision® Multilabel Reader with the following recommended setup:

- Mirror: Luminescence - Slot4
- Emission filter: Chroma Cat.# AT600LP- EmSlot4
- Second emission filter: Chroma Cat.# AT460/50m - EmSlot1
- Measurement height (mm): 6.5
- Measurement time (seconds): 1

## 4. NanoBRET™ TE Intracellular Kinase Assay Protocols

### 4.A. General Protocol for ADH Format Assays without Regulator Co-expression

This general protocol applies to all kinases where co-expression of a regulatory protein is not required for the assay. In these cases, Transfection Carrier DNA is used in conjunction with the kinase-NanoLuc® fusion vector to prepare the transfection complexes. Visit [www.promega.com/kinasevectors](http://www.promega.com/kinasevectors) to find the application note(s) for your target of interest to determine if co-expression of a regulatory protein is required. These application note(s) can also be found on the kinase-NanoLuc® fusion vector product webpage for your kinase of interest.

#### Materials to be Supplied by the User

(Media Compositions are supplied in Section 4.B.)

- HEK293 or similar cultured mammalian cells
- Dulbecco's Modified Eagle Medium (DMEM; Thermo Fisher Cat.# 11995-065)
- fetal bovine serum (HyClone Cat.# SH30070.03, Seradigm Cat.# 1500-050)
- Opti-MEM® I Reduced Serum Medium, no phenol red (Life Technologies Cat.# 11058-021)
- white, tissue-culture treated 96-well plates (Corning Cat.# 3917) or 384-well plates (Corning Cat.# 3570)
- tissue-culture equipment and reagents
- polypropylene plasticware (**Note:** Do not use polystyrene plasticware for this assay.)
- 0.05% Trypsin/EDTA (Thermo Fisher Cat.# 25300)
- FuGENE® HD Transfection Reagent (Cat.# E2311)
- DMSO (Sigma Cat.# D2650)
- detection instrument capable of measuring NanoBRET™ wavelengths (e.g., GloMax® Discover System [Cat.# GM3000]; see Section 3.B)

The volumes specified for the NanoBRET™ Target Engagement Protocol are for 96-well plates. Table 1 lists the assay volumes used for both 96- and 384-well plates. Modify the reagent volumes in Sections 4.C-4.F as listed in Table 1 if 384-well plates are used.

**Table 1. Volumes of NanoBRET™ TE Assay Reagents Used for Multiwell Plates.**

Day 1: Plate Cells	Volume Per Well	
	384-Well Plate	96-Well Plate
Assay Medium with transfected cells	40µl	100µl
<b>Day 2: Add Tracer and Test Compound</b>		
Complete 20X NanoBRET™ Tracer Reagent	2µl	5µl
10X Test Compound	4µl	10µl
<b>Day 2: Add NanoBRET™ Assay Reagents</b>		
3X Complete Substrate plus Inhibitor Solution (see Section 4.D)	20µl	50µl

## 4.B. Composition of Buffers and Solutions

### Cell Culture Medium

90% DMEM (Thermo Fisher Cat.# 11995-065)

10% fetal bovine serum (FBS; HyClone™ Cat.# SH30070.03, Seradigm Cat.# 1500-050)

### Assay Medium

99% Opti-MEM® I Reduced Serum Medium, no phenol red (Life Technologies Cat.# 11058-021)

1% fetal bovine serum (FBS; HyClone™ Cat.# SH30070.03, Seradigm Cat.# 1500-050)

## 4.C. Transient Transfection of HEK293 Cells with Kinase-NanoLuc® Fusion Vector DNA

1. Cultivate HEK293 cells (or desired cell type) appropriately prior to assay.

### Notes:

- a. This protocol has been optimized for HEK293 cells. If other cell types are used, optimize the transfection conditions and revalidate the assay to determine an appropriate concentration of NanoBRET™ tracer (4).
  - b. For optimal performance, users should use cells that have been freshly passaged, ideally within 1–2 days.
2. Remove medium from cell flask by aspiration, trypsinize and allow cells to dissociate from the flask.
3. Neutralize trypsin using Cell Culture Medium and centrifuge at  $200 \times g$  for 5 minutes to pellet cells.
4. Aspirate medium and resuspend cells in Assay Medium.
5. Adjust density to  $2 \times 10^5$  cells/ml using Assay Medium.
- Note:** Exceeding this number of cells can result in poor signal to background.
6. If HEK293 cells are used, prepare lipid:DNA complexes as follows:
- a. Prepare a 10µg/ml solution of DNA in Opti-MEM® I Reduced Serum Medium, no phenol red that consists of the following ratios: 9.0µg/ml of Transfection Carrier DNA, 1.0µg/ml of Kinase-NanoLuc® fusion vector DNA and 1ml of Opti-MEM® I. To accurately dilute the NanoLuc® fusion vector, serially dilute the fusion vector with Transfection Carrier DNA to maintain the same total amount of DNA (e.g., 10µg).
  - b. Mix thoroughly.
  - c. Add 30µl of FuGENE® HD Transfection Reagent into each milliliter of DNA mixture to form lipid:DNA complex. Ensure that the FuGENE® HD Transfection Reagent does not touch the plastic side of the tube; pipet directly into the liquid in the tube.
  - d. Mix by inversion 5–10 times.
  - e. Incubate at ambient temperature for 20 minutes to allow complexes to form.
7. In a sterile, conical tube, mix 1 part of lipid:DNA complex (e.g., 1ml) with 20 parts of HEK293 cells (e.g., 20ml) in suspension at  $2 \times 10^5$  cells/ml. Mix gently by inversion 5 times.

**Note:** Larger or smaller bulk transfections should be scaled accordingly, using this 20:1 cells to lipid:DNA complex ratio.

8. Dispense 100µl cells + lipid:DNA complex into a sterile tissue-culture treated 96-well assay plate and incubate 20–30 hours. We recommend a cell density of approximately 55,000–80,000 cells/cm<sup>2</sup> during the transfection. For example, use approximately 20,000 cells/well for a 96-well Corning #3917 assay plate.

#### 4.D. Preparing NanoBRET™ Tracer Reagent and Adding to Cells

1. Prepare Complete 20X NanoBRET™ Tracer Reagent.
  - a. First, prepare a 100X solution of NanoBRET™ Tracer in 100% DMSO. For each individual target, we provide a recommended 100X tracer concentration as a starting point. The recommended tracer concentration for a particular kinase can be found in the application note for the kinase. Higher tracer concentrations may increase assay window but reduce sensitivity. Therefore, you may need to optimize the tracer concentration. See Figures 4 and 5 for example data for each of the control assays.
  - b. Prepare Complete 20X NanoBRET™ Tracer Reagent by adding 4 parts of Tracer Dilution Buffer to 1 part of 100X NanoBRET™ tracer.

**Note:** Because the Tracer Dilution Buffer is viscous, slowly dispense both the Tracer Dilution Buffer and the Complete 20X NanoBRET™ Tracer Reagent. For alternate tracer preparation protocols, see Section 7.C.

2. Dispense 5µl of Complete 20X NanoBRET™ Tracer Reagent per well to cells. Mix the 96-well plate on an orbital shaker for 15 seconds at 900rpm. Note: Plate mixing may need to be optimized on different orbital shakers and for 384-well experiments, using an alternative plate mixing apparatus. See Section 7.D for more details.

**Optional:** Prepare a separate set of samples without tracer for optional background correction steps.

#### 4.E. Adding Test Compounds

1. Prepare serially diluted test compound at 1,000X final concentration in 100% DMSO. Then dilute 1,000X test compound to 10X final concentration in Opti-MEM® I Reduced Serum Medium, no phenol red.
2. Add 10µl of 10X serially diluted test compound per well of 96-well plates containing cells with 1X NanoBRET™ Tracer Reagent. Thoroughly mix plate on an orbital shaker for 15 seconds at 900rpm.

**Note:** Plate mixing may need to be optimized on different orbital shakers.

3. Incubate the plate at 37°C, 5% CO<sub>2</sub> for 2 hours.

**Note:** Depending on the permeability and binding characteristics of the test compound, incubation times with test compound may require optimization by the end user.

#### 4.F. NanoBRET™ Assay Protocol

1. Remove plate from incubator and equilibrate to room temperature for 15 minutes.
2. Prepare 3X Complete Substrate plus Inhibitor Solution in Opti-MEM® I Reduced Serum Medium, no phenol red, just before measuring BRET as described in Table 2. Mix gently by inversion 5–10 times in a conical tube. (The final concentration of Extracellular NanoLuc® Inhibitor in the 3X solution is 60µM, for a working concentration of 20µM.)

**Note:** Use 3X Complete Substrate plus Inhibitor Solution within 1.5 hours. Discard any unused solution.

**Table 2. Volumes of NanoBRET™ TE Reagents Used for Preparing 3X Complete Substrate Plus Inhibitor Solution.**

Component	96-Well Plate	384-Well Plate
NanoBRET™ Nano-Glo® Substrate	30µl	48µl
Extracellular NanoLuc® Inhibitor	10µl	16µl
Opti-MEM® reduced serum medium, no phenol red	4,960µl	7,936µl
<b>Total Volume</b>	<b>5,000µl</b>	<b>8,000µl</b>

3. Add 50µl of 3X Complete Substrate plus Inhibitor Solution to each well of the 96-well plate. Incubate for 2–3 minutes at room temperature.
4. Measure donor emission wavelength (e.g., 450nm) and acceptor emission wavelength (e.g., 610nm) using the GloMax® Discover System or other NanoBRET™ Assay-compatible luminometer (see Section 3.B).  
**Note:** We recommend measuring BRET within 10 minutes after adding NanoBRET™ Nano-Glo® Substrate plus Extracellular NanoLuc® Inhibitor Solution. You can measure BRET for up to 2 hours, but there will be some loss of luminescent signal and re-equilibration of the sample into the larger volume.

#### 4.G. Determining BRET Ratio

1. To generate raw BRET ratio values, divide the acceptor emission value (e.g., 610nm) by the donor emission value (e.g., 450nm) for each sample.  
**Optional:** To correct for background, subtract the BRET ratio in the absence of tracer (average of no-tracer control samples) from the BRET ratio of each sample.
2. Convert raw BRET units to millibRET units (mBU) by multiplying each raw BRET value by 1,000.

##### NanoBRET™ ratio equation:

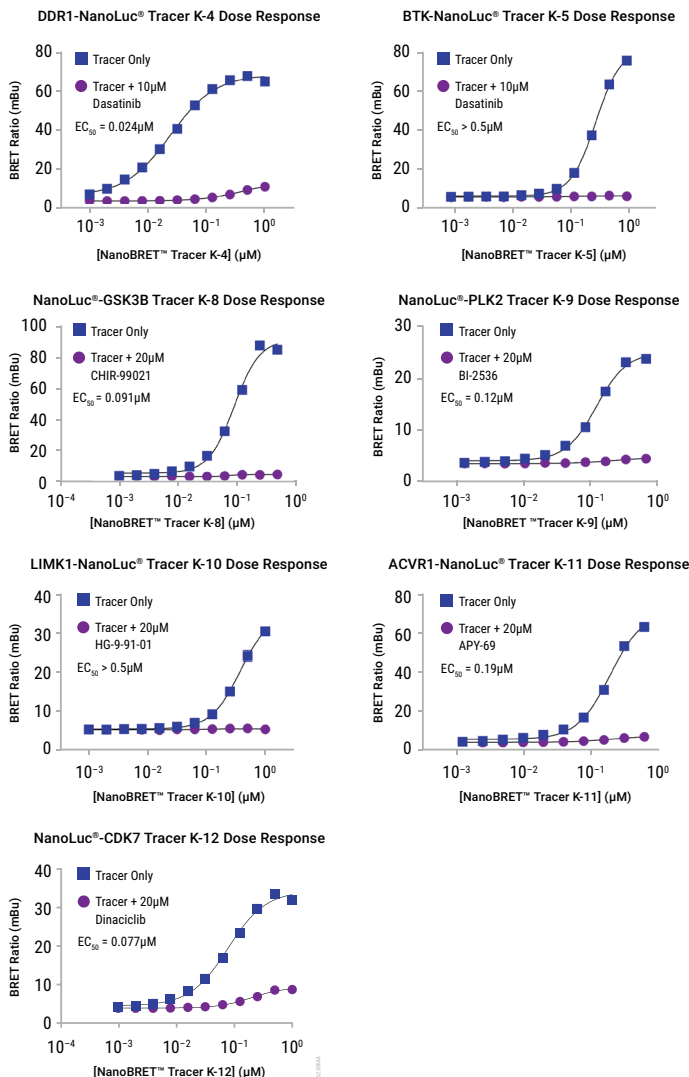
$$\text{BRET Ratio} = \frac{\text{Acceptor}_{\text{sample}}}{\text{Donor}_{\text{sample}}} \times 1,000$$

##### NanoBRET™ ratio equation, including optional background correction:

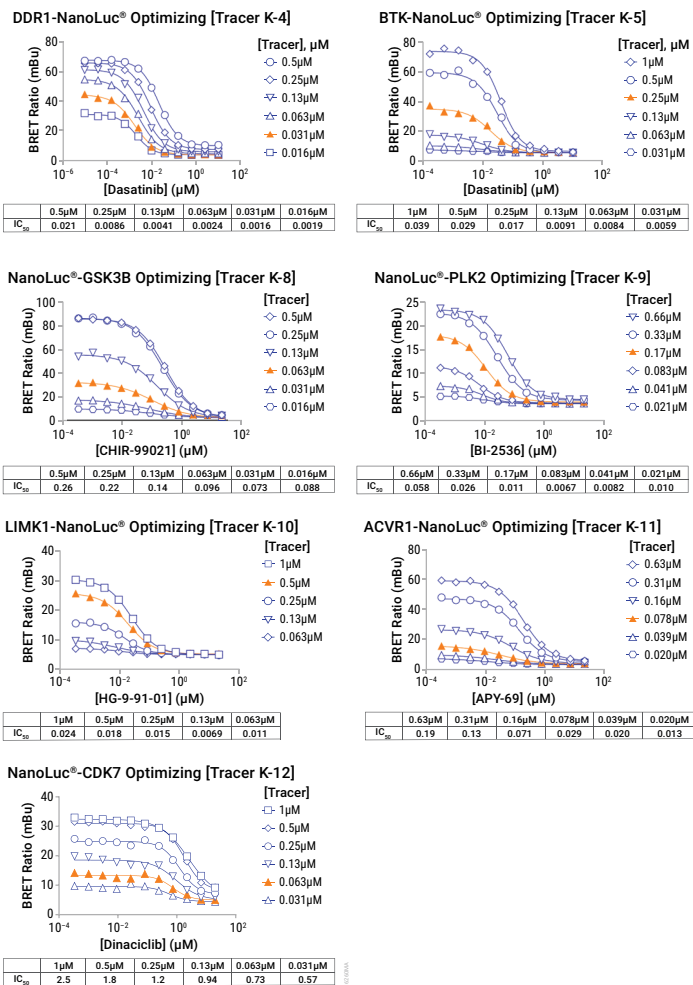
$$\text{BRET Ratio} = \left[ \left( \frac{\text{Acceptor}_{\text{sample}}}{\text{Donor}_{\text{sample}}} \right) - \left( \frac{\text{Acceptor}_{\text{no-tracer control}}}{\text{Donor}_{\text{no-tracer control}}} \right) \right] \times 1,000$$



#### 4.H. BRET Data Generated for Control Kinases using the ADH Format Assay Protocol



**Figure 4. Apparent intracellular NanoBRET™ tracer affinity for control Kinase-NanoLuc® Fusion Proteins in the ADH format.** Adherent HEK293 cells in a 96-well plate expressing control Kinase-NanoLuc® fusion proteins were mixed with increasing concentrations of appropriate NanoBRET™ Tracer. Cells were treated with an excess of unlabeled compound as a competitive inhibitor for 2 hours before adding 3X Complete Substrate plus Inhibitor Solution. BRET measurements were made on a GloMax® Discover System equipped with NanoBRET™ 618 filters (donor 450nm/8nm BP and acceptor 600nm LP). Raw BRET ratios were then converted to millibRET units (mBU) and plotted vs. NanoBRET™ tracer concentration to determine apparent intracellular potency (EC<sub>50</sub>) of the tracer.



**Figure 5. Representative examples of optimizing the NanoBRET™ tracer concentration for control kinases in the ADH format.** Adherent HEK293 cells in a 96-well plate expressing control Kinase-NanoLuc® fusion proteins were mixed with increasing concentrations of NanoBRET™ Tracer. Cells were treated with increasing concentrations of test compounds as competitive inhibitors for 2 hours before adding 3X Complete Substrate plus Inhibitor Solution. BRET measurements were made on a GloMax® Discover System equipped with NanoBRET™ 618 filters (donor 450nm/8nm BP and acceptor 600nm LP). Raw BRET ratios were then converted to millibRET units (mBU) and plotted vs. NanoBRET™ tracer concentration to determine apparent affinity of the unlabeled test compound at each concentration of tracer. If you are using NanoBRET™ TE Intracellular Kinase Assay for the first time, our recommended concentration for each NanoBRET™ Tracer is shown in orange. Note that lower tracer concentrations result in more accurate estimation of intracellular compound affinity but also a lower assay window. The use of a lower concentration of tracer may be more accurate when quantifying intracellular compound affinity. See Section 5 for additional approaches to achieve quantitative analysis of test compound affinity.

#### 4.1. General Protocol for ADH Assays that Require Regulator Protein Co-expression

This protocol applies to all kinases where co-expression of a regulatory or partner protein is required for the assay. Specific examples include assays for most cyclin-dependent kinases and phosphatidylinositol 3-kinases. See Table 3 to determine if your target of interest requires co-expression of a regulatory protein.

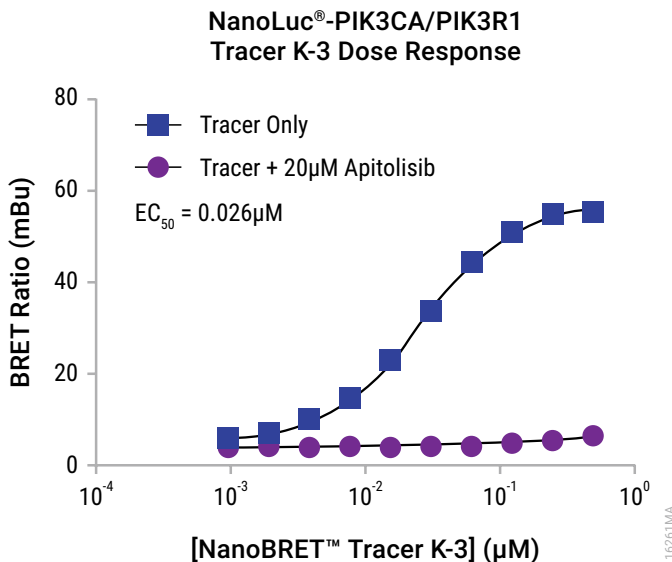
The protocol for the NanoBRET™ Intracellular Kinase Assay for those kinase that require co-expression of a regulatory protein is identical to the general protocol described in Sections 4.A–4.G above, with one modification to Section 4.C, where the 9.0µg of Transfection Carrier DNA used in Step 6.a should be replaced with 9.0µg of the expression vector for the regulatory protein. All other steps in the protocol are identical. Please refer to Sections 4.A–4.G above for additional protocol details.

**Table 3. Kinases that Require Co-Expression of a Regulator.**

Kinase Assay	Kinase Plasmid Name	Regulator	Regulator Plasmid Name
CDK1/Cyclin B1	CDK1-NanoLuc® Fusion Vector	CCNB1	CCNB1 Expression Vector
CDK1/Cyclin E1	CDK1-NanoLuc® Fusion Vector	CCNE1	CCNE1 Expression Vector
CDK2/Cyclin A1	CDK2-NanoLuc® Fusion Vector	CCNA1	CCNA1 Expression Vector
CDK2/Cyclin E1	CDK2-NanoLuc® Fusion Vector	CCNE1	CCNE1 Expression Vector
CDK3/Cyclin E1	CDK3-NanoLuc® Fusion Vector	CCNE1	CCNE1 Expression Vector
CDK4/Cyclin D1	NanoLuc®-CDK4 Fusion Vector	CCND1	CCND1 Expression Vector
CDK4/Cyclin D3	NanoLuc®-CDK4 Fusion Vector	CCND3	CCND3 Expression Vector
CDK5/CDK5R1	CDK5-NanoLuc® Fusion Vector	CDK5R1	CDK5R1 Expression Vector
CDK5/CDK5R2	CDK5-NanoLuc® Fusion Vector	CDK5R2	CDK5R2 Expression Vector
CDK6/Cyclin D1	NanoLuc®-CDK6 Fusion Vector	CCND1	CCND1 Expression Vector
CDK8/Cyclin C	NanoLuc®-CDK8 Fusion Vector	CCNC	CCNC Expression Vector
CDK9/Cyclin K	NanoLuc®-CDK9 Fusion Vector	CCNK	CCNK Expression Vector
CDK9/Cyclin T1	NanoLuc®-CDK9 Fusion Vector	CCNT1	CCNT1 Expression Vector
CDK10/Cyclin L2	CDK10-NanoLuc® Fusion Vector	CCNL2	CCNL2 Expression Vector
CDK11A/Cyclin K	CDK11A-NanoLuc® Fusion Vector	CCNK	CCNK Expression Vector
CDK11A/Cyclin L2	CDK11A-NanoLuc® Fusion Vector	CCNL2	CCNL2 Expression Vector
CDK11B/Cyclin K	CDK11B-NanoLuc® Fusion Vector	CCNK	CCNK Expression Vector
CDK11B/Cyclin L2	CDK11B-NanoLuc® Fusion Vector	CCNL2	CCNL2 Expression Vector
CDK14/Cyclin Y	CDK14-NanoLuc® Fusion Vector	CCNY	CCNY Expression Vector
CDK15/Cyclin Y	NanoLuc®-CDK15 Fusion Vector	CCNY	CCNY Expression Vector
CDK16/Cyclin Y	CDK16-NanoLuc® Fusion Vector	CCNY	CCNY Expression Vector
CDK17/Cyclin Y	CDK17-NanoLuc® Fusion Vector	CCNY	CCNY Expression Vector

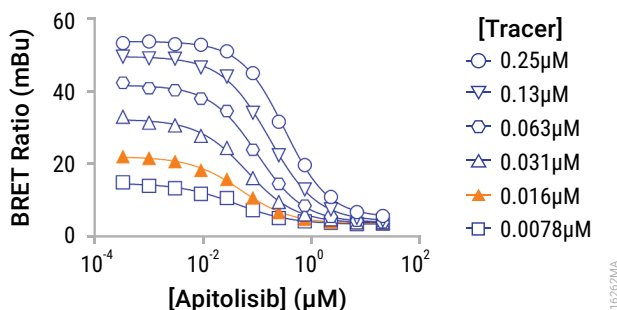
<b>Kinase Assay</b>	<b>Kinase Plasmid Name</b>	<b>Regulator</b>	<b>Regulator Plasmid Name</b>
CDK18/Cyclin Y	CDK18-NanoLuc® Fusion Vector	CCNY	CCNY Expression Vector
CDK19/Cyclin C	NanoLuc®-CDK19 Fusion Vector	CCNC	CCNC Expression Vector
CDK20/Cyclin H	NanoLuc®-CDK20 Fusion Vector	CCNH	CCNH Expression Vector
PIK3CA/PIK3R1	NanoLuc®-PIK3CA Fusion Vector	PIK3R1	PIK3R1 Expression Vector
PIK3CA(C420R)/PIK3R1	NanoLuc®-PIK3CA(C420R) Fusion Vector	PIK3R1	PIK3R1 Expression Vector
PIK3CA(E542K)/PIK3R1	NanoLuc®-PIK3CA(E542K) Fusion Vector	PIK3R1	PIK3R1 Expression Vector
PIK3CA(E545A)/PIK3R1	NanoLuc®-PIK3CA(E545A) Fusion Vector	PIK3R1	PIK3R1 Expression Vector
PIK3CA(E545K)/PIK3R1	NanoLuc®-PIK3CA(E545K) Fusion Vector	PIK3R1	PIK3R1 Expression Vector
PIK3CA(H1047L)/PIK3R1	NanoLuc®-PIK3CA(H1047L) Fusion Vector	PIK3R1	PIK3R1 Expression Vector
PIK3CA(H1047R)/PIK3R1	NanoLuc®-PIK3CA(H1047R) Fusion Vector	PIK3R1	PIK3R1 Expression Vector
PIK3CA(H1047Y)/PIK3R1	NanoLuc®-PIK3CA(H1047Y) Fusion Vector	PIK3R1	PIK3R1 Expression Vector
PIK3CA(I800L)/PIK3R1	NanoLuc®-PIK3CA(I800L) Fusion Vector	PIK3R1	PIK3R1 Expression Vector
PIK3CA(M1043I)/PIK3R1	NanoLuc®-PIK3CA(M1043I) Fusion Vector	PIK3R1	PIK3R1 Expression Vector
PIK3CA(Q546K)/PIK3R1	NanoLuc®-PIK3CA(Q546K) Fusion Vector	PIK3R1	PIK3R1 Expression Vector
PIK3CB/PIK3R1	NanoLuc®-PIK3CB Fusion Vector	PIK3R1	PIK3R1 Expression Vector
PIK3CD/PIK3R1	NanoLuc®-PIK3CD Fusion Vector	PIK3R1	PIK3R1 Expression Vector

#### 4.J. BRET Data for a Kinase-NanoLuc® Fusion Using a Regulatory Expression Vector with Tracer K-3



**Figure 6. Apparent intracellular NanoBRET™ Tracer K-3 affinity for PIK3CA/PIK3R1 assay in the ADH format.** Adherent HEK293 cells in a 96-well plate expressing both NanoLuc®-PIK3CA fusion protein and the PIK3R1 regulatory protein (1:9 transfection ratio) were mixed with increasing concentrations of NanoBRET™ Tracer K-3. Cells were treated with 20µM apitolisib as a competitive inhibitor for 2 hours before adding 3X Complete Substrate plus Inhibitor Solution. BRET measurements were made on a GloMax® Discover System equipped with NanoBRET™ 618 filters (donor 450nm/8nm BP and acceptor 600nm LP). Raw BRET ratios were then converted to milliBRET units (mBU) and plotted vs. NanoBRET™ Tracer K-3 concentration to determine apparent intracellular potency ( $EC_{50}$ ) of the tracer.

### NanoLuc®-PIK3CA/PIK3R1 Optimizing [Tracer K-3]



	0.25µM	0.13µM	0.063µM	0.031µM	0.016µM	0.0078µM
EC <sub>50</sub>	0.32	0.17	0.098	0.064	0.050	0.040

**Figure 7. Optimizing the NanoBRET™ Tracer K-3 concentration for PIK3CA/PIK3R1 assay in the ADH format.** Adherent HEK293 cells in a 96-well plate expressing both NanoLuc®-PIK3CA fusion protein and the PIK3R1 regulatory protein (1:9 transfection ratio) were mixed with increasing concentrations of NanoBRET™ Tracer K-3. Cells were treated with increasing concentrations of apitolisib as a competitive inhibitor for 2 hours before adding 3X Complete Substrate plus Inhibitor Solution. BRET measurements were made on a GloMax® Discover System equipped with NanoBRET™ 618 filters (donor 450nm/8nm BP and acceptor 600nm LP). Raw BRET ratios were then converted to millibRET units (mBU) and plotted vs. NanoBRET™ Tracer K-3 concentration to determine apparent affinity of apitolisib at each concentration of tracer. If you are using NanoBRET™ TE Intracellular Kinase Assay with NanoLuc-PIK3CA for the first time, our recommended concentration of 0.016µM NanoBRET™ Tracer K-3 is shown in orange. Note that lower tracer concentrations result in more accurate estimation of intracellular compound affinity but also a lower assay window. The use of a lower concentration of tracer may be more accurate when quantifying intracellular compound affinity. See Section 5 for additional approaches to achieve quantitative analysis of test compound affinity.

## 5. Achieving Quantitative Analysis of Test Compound Affinity

The NanoBRET™ TE Assay allows you to evaluate the affinity of a test compound for a target of interest inside living cells. However, like other competitive binding assays, the apparent affinity of a test compound can be affected by the amount of the NanoBRET™ tracer that is used in the assay. Because the tracer and test compound both compete for binding to the target NanoLuc® fusion, increasing concentrations of NanoBRET™ tracer can shift the apparent  $IC_{50}$  value of the test drug to higher concentrations. This relationship, termed the “Cheng-Prusoff relationship,” becomes most significant when the concentration of tracer is in excess of its apparent intracellular affinity for the target NanoLuc® fusion.

If you are a new user of the NanoBRET™ TE Assay, we suggest that you measure the affinity of test compounds at the recommended concentration of tracer, which is usually a sub-saturating dose between the  $EC_{50}$  and  $EC_{80}$  of the tracer. This provides a good starting point for the rank-ordering of test compound affinity for the kinase-NanoLuc® fusion. The recommended tracer concentration for each kinase can be found in an application note, available on the product page for the kinase-NanoLuc® fusion vector.

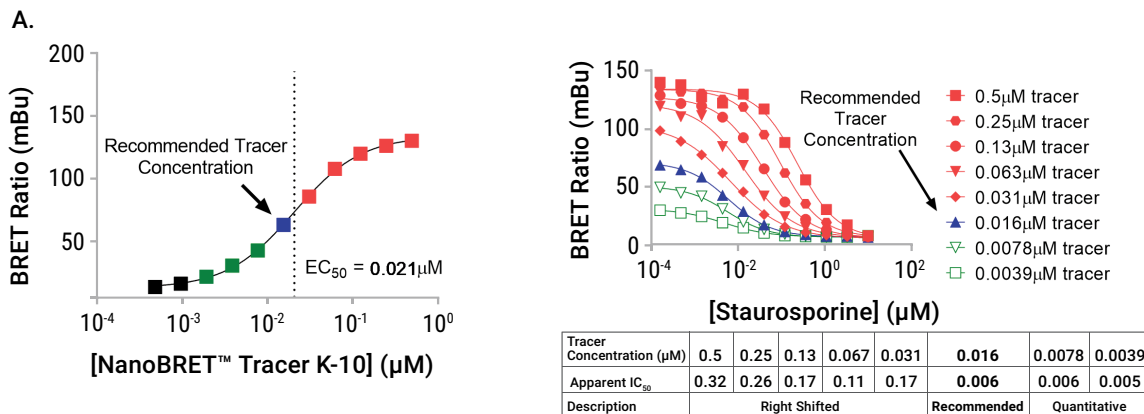
Once familiar with the NanoBRET™ TE Assay, you may choose to further optimize the tracer concentration to achieve a more quantitative analysis of test compound affinity. With careful choice of the NanoBRET™ tracer concentration, the NanoBRET™ TE Assay allows you to achieve a more quantitative determination of test compound affinity that approaches the apparent intracellular affinity constant (intracellular  $K_i$ ) for the target NanoLuc® fusion.

To improve quantitation of test compound affinity, choose a tracer concentration that is at or below the  $EC_{50}$  of the tracer for the target NanoLuc® fusion. An example of this approach is provided in Figure 8, Panel A, for a target that can be saturated when titrated with NanoBRET™ Tracer, as shown in the NanoBRET dose response curve. Provided that the assay window is still adequate (ideally assay window > 2), this approach will produce an  $IC_{50}$  for the test compound that is independent of the concentration of NanoBRET™ tracer used in the experiment. Due to assay window constraints when choosing a tracer concentration, this more quantitative approach is reserved only for the High Window and some Medium Window assays (see Table 4 and Section 7.A), where the use of tracer concentrations at or below the  $EC_{50}$  still provides an adequate assay window.

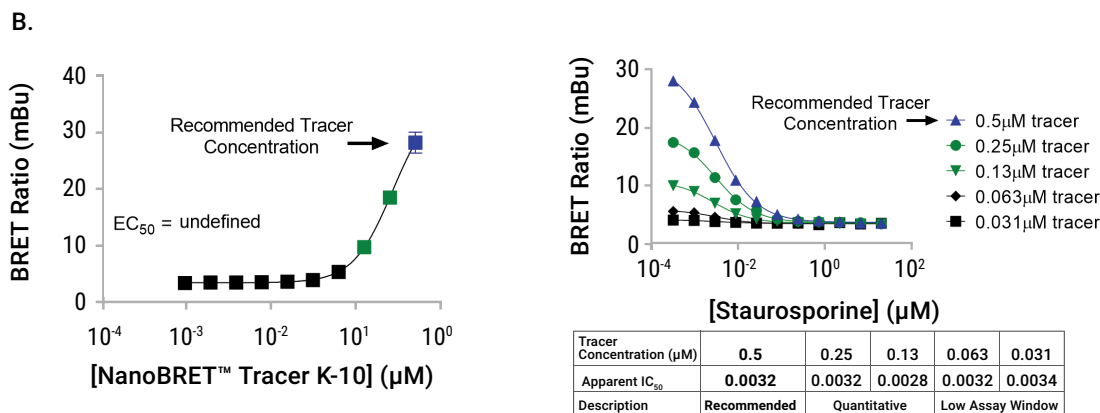
Due to the functional solubility limits of the tracers (typically 1  $\mu$ M), some targets cannot be saturated by the tracer under live-cell assay conditions. In these cases (for an example, see Figure 8, Panel B), the apparent  $IC_{50}$  value of the test compound may appear insensitive to tracer concentration. Thus, the recommended tracer concentration is already a good choice for approaching quantitative analysis.

For users interested in more advanced approaches that directly measure the intracellular  $K_i$ , the Cheng-Prusoff relationship can be utilized to perform linear regression analysis for kinases in which the tracer binding is saturable. For details on the linearized Cheng-Prusoff analysis, consult references 3 and 4 below.

### AURKC-NanoLuc<sup>®</sup>



### CDKL2-NanoLuc<sup>®</sup>



**Figure 8. Approaches to achieving quantitation of intracellular compound affinity using NanoBRET™ TE.** Examples of tracer affinity and apparent intracellular compound affinity for a target with strong tracer affinity (**Panel A**) and a target with weak tracer affinity (**Panel B**) are provided. HEK293 cells expressing individual kinase-NanoLuc<sup>®</sup> fusions were resuspended in Assay Medium and seeded into 96-well plates. Cells were treated with various concentrations of NanoBRET™ Tracer K-10 and unlabeled compound as a competitive inhibitor and incubated for 2 hours before adding 3X Complete Substrate plus Inhibitor Solution. BRET was measured using a GloMax<sup>®</sup> Discover System equipped with NanoBRET™ 618 filters (donor 450nm/8nm BP and acceptor 600nm LP). Raw BRET ratios were then converted to milliBRET units (mBu) and plotted vs. NanoBRET™ Tracer K-10 concentration to determine apparent intracellular affinity of the tracer or unlabeled compound.



## 6. Troubleshooting

For questions not addressed here, please contact your local Promega Branch Office or Distributor. Contact information available at: [www.promega.com](http://www.promega.com). E-mail: [techserv@promega.com](mailto:techserv@promega.com)

### Symptoms

NanoBRET™ signal without test compound is weak or close to instrument background

### Causes and Comments

Tracer was adsorbed to plasticware surface. Use polypropylene materials and avoid polystyrene materials during transfer of tracer working reagents to minimize tracer adsorption.

Incorrect plate type was used. For the ADH protocol described in this manual, we recommend using the Corning tissue culture-treated assay plates (#3917 or #3570). Alternative plates may require assay revalidation (consult reference 4 for assay validation details).

Suboptimal tracer concentration. Consider optimizing the concentration of tracer for your experiment. Only dilute NanoBRET™ tracers to 20X in Tracer Dilution Buffer prior to adding the tracer to the culture medium. NanoBRET™ tracers K-3, K-8, K-9, K-10, K-11 and K-12 will precipitate above 1µM in Assay Medium or other aqueous environments. See Section 7.C for alternative tracer preparation options.

Instrument was set up improperly. Use the correct filters for donor wavelength (450nm) and acceptor wavelength (590nm) on your instrument to accurately measure NanoBRET™ signals.

Poor expression levels of the NanoLuc® fusion protein. Not all fusion proteins express identically in HEK293 cells, though the majority express adequately using the transfection conditions described in Section 4. If poor expression is suspected, determine the luminescence (RLU) from the donor (450nm) and acceptor (610nm) channels for cells expressing the NanoLuc® fusion (the signal) and compare that to the donor and acceptor RLU in the absence of cells expressing NanoLuc® protein (the background). If the signal-to-background ratio is less than 100, consider optimizing transfection conditions. Transfection optimization could involve increasing the ratio of the NanoLuc® fusion vector to the transfection carrier DNA while keeping the total DNA in the transfection mixture fixed. Moreover, cell density at time of harvest can affect transfectability. Freshly passaged HEK293 cells (ideally within 1–2 days) should be harvested at 80–95% confluency for optimal transfectability. HEK293 cells approaching confluency do not transfect as efficiently.

---

**Symptoms**

Observed IC<sub>50</sub> value is right-shifted compared to expected value

---

**Causes and Comments**

During correct execution of the assay, cell-based analyses of target engagement may result in right-shifted pharmacology relative to that observed in a biochemical assay due to myriad cellular factors. These include permeability, the presence of endogenous metabolites, target activation state, or the presence of intracellular complexes. Moreover, target engagement parameters for full-length targets in a cellular context may differ from that of truncated domains commonly used in biochemical assays.

---

The concentration of the NanoBRET™ tracer may affect the observed IC<sub>50</sub> value. Carefully select tracer concentration (see Section 5). Determine a more accurate compound IC<sub>50</sub> by optimizing the tracer concentration.

---

Donor or acceptor luminescence increases or decreases when tracer is added

This phenomenon is common but generally does not affect the assay. Figure 9A demonstrates representative data showing raw luminescence from donor (450nm) and acceptor (610nm) channels when NanoBRET™ Tracer K-11 is titrated. BRET that occurs between the NanoLuc® fusion protein and fluorescent tracer may result in a dose-dependent increase in acceptor luminescence with a corresponding decrease in donor luminescence. The effect of BRET on donor and acceptor luminescence may vary depending on the target and tracer used. Ratiometric BRET analysis mitigates the influence of fluctuations in raw luminescence from NanoLuc® luciferase.

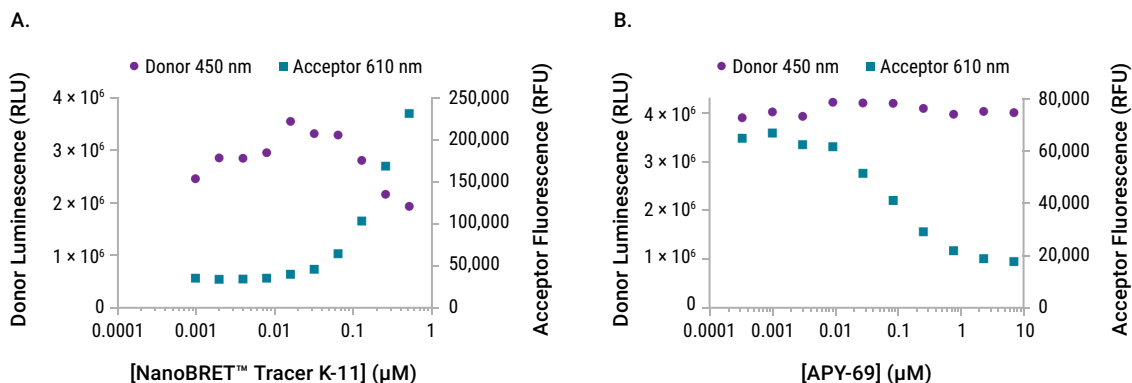
---

Noisy data

Poor expression levels of the NanoLuc® fusion protein. Not all fusion proteins express identically in HEK293 cells, though the majority express adequately using the transfection conditions described in Section 4. If poor expression is suspected, determine the luminescence (RLU) from the donor (450nm) and acceptor (610nm) channels for cells expressing the NanoLuc® fusion (the signal) and compare that to the donor and acceptor RLU in the absence of cells expressing NanoLuc® (the background). If the signal-to-background ratio is less than 100, consider optimizing transfection conditions. Transfection optimization could involve increasing the ratio of the NanoLuc® fusion vector to the transfection carrier DNA while keeping the total DNA in the transfection mixture fixed. Moreover, cell density at time of harvest can affect transfectability. Freshly passaged HEK293 cells (ideally within 1–2 days) should be harvested at 80–95% confluency for optimal transfectability. HEK293 cells approaching confluency do not transfect as efficiently.

---

## 6. Troubleshooting (continued)



**Figure 9. Potential effects of raw luminescence on donor and acceptor emission in the NanoBRET™ TE Assay in a tracer dose response experiment or compound dose response experiment. Panel A.** The tracer dose response experiment for the ACVR1-NanoLuc® fusion protein was carried out as described in Figure 4, using a dose response of tracer. **Panel B.** The compound dose response experiment for the ACVR1-NanoLuc® fusion protein was carried out as described in Figure 5, using a fixed tracer concentration of 0.078µM tracer and a dose response of the APY-69 competitor.

## 7. Appendix

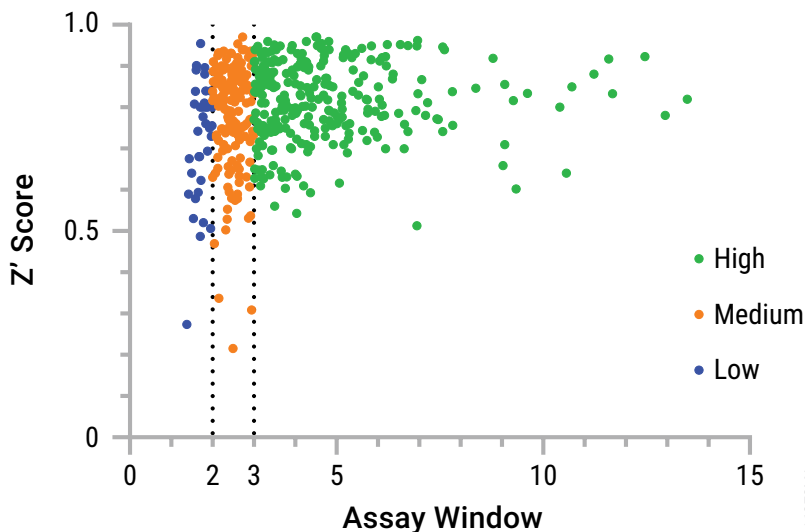
### 7.A. Representative Target Engagement Data for Kinase-NanoLuc® Fusions and Assay Capabilities

The NanoBRET™ TE Intracellular Kinase Assay is compatible with a diverse set of intracellular kinases. The affinity of each tracer varies among these compatible kinases and the tracer concentration should be adjusted accordingly for optimal assay performance. For each kinase-NanoLuc® fusion vector we demonstrate the tracer dose-response and provide a recommended tracer concentration in an application note, included as a link on the kinase-NanoLuc® fusion vector web page. Application notes are also listed in the Kinase Target Engagement Assay Selection Table at [www.promega.com/kinasevectors](http://www.promega.com/kinasevectors)

When using this NanoBRET™ TE Intracellular Kinase Assay protocol with a compatible kinase other than the control kinases depicted above in Section 4, there are two changes you need to make to the protocol: 1) In Section 4.C, Step 6, prepare the lipid:DNA complexes using your kinase NanoLuc® fusion vector of interest, instead of the control target vector; 2) In Section 4.D, Step 6, prepare 100X tracer using the 100X recommended tracer concentration listed in the application note. Follow the remaining protocol steps as written.

For a more accurate estimate of intracellular compound affinity, it may also be possible to use a lower tracer concentration than recommended. Approaches to achieve a more quantitative measurement of compound affinity are provided in Section 5 of this technical manual, as well as the Application Note.

One other difference that may be observed when using the NanoBRET™ TE Kinase Assay to query different compatible kinase fusions is the assay window. Assay window is the raw fold change in the BRET ratio observed at the recommended concentration of tracer compared to the BRET ratio in the presence of a saturating dose of unlabeled compound. Due to the distance and geometry components of BRET, the assay window may not be the same as observed with the control target vector, which can influence the potential assay quality ( $Z'$ ) (Figure 10). Since the NanoBRET™ Assay window may vary among compatible kinases, we have organized the assays into groupings for a particular kinase target given the assay window (Table 4). Example data sets for a kinase in each assay category are provided in Figure 11.



**Figure 10. Correlating assay quality with assay window in the ADH format.** Assay quality ( $Z'$ ) was determined for over 480 target-NanoBRET™ tracer combinations tested in the ADH format by comparing BRET values ( $n = 4$ ) in the presence and absence of a saturating dose of test compound. The  $Z'$  scores were plotted versus the corresponding assay window, and the resultant data points were grouped into three different assay categories based upon the likelihood that a good quality assay was achieved ( $Z' > 0.5$ ). High window assays (depicted in green) in which the assay window is above threefold have an excellent probability of achieving a good  $Z'$  score. Medium window assays (depicted in orange) in which the assay window is above twofold, but below 3-fold, have a good probability of achieving a good  $Z'$  score. Low window assays (depicted in blue) in which the assay window is below twofold have a moderate probability of achieving a good  $Z'$  score. Descriptions of the expected assay capabilities for each of the above assay categories is provided in Table 4.

## 7.A. Representative Target Engagement Data and Assay Capabilities (continued)

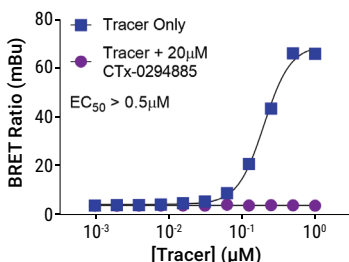
**Table 4. NanoBRET™ TE Assay Capabilities.**

<b>Assay Category</b>	<b>Assay Window (AW)<sup>1</sup></b>	<b>Assay Capabilities</b>
High Window	$AW \geq 3.0$	<ul style="list-style-type: none"> <li>• Multiple-dose compound profiling to determine <math>IC_{50}</math> at a fixed concentration of tracer in 96- or 384-well format.</li> <li>• Low- to high-throughput single-dose profiling at fixed tracer concentration.</li> <li>• Excellent candidate for further miniaturization with optimization.</li> </ul>
Medium Window	$3.0 > AW \geq 2.0$	<ul style="list-style-type: none"> <li>• Multiple-dose compound profiling to determine <math>IC_{50}</math> at fixed concentration of tracer in 96-well format.</li> <li>• Possible candidate for medium-throughput single-dose profiling at a fixed tracer concentration with optimization.</li> <li>• Possible candidate for scale-down to 384-well format with optimization by the end user.</li> </ul>
Low Window	$2.0 > AW \geq 1.6$	<ul style="list-style-type: none"> <li>• Multiple-dose compound profiling to determine <math>IC_{50}</math> at fixed concentration of tracer in 96-well format.</li> </ul>

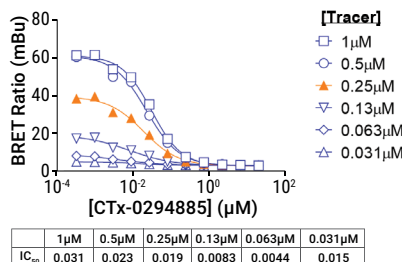
<sup>1</sup>Assay window is the raw fold change in the BRET ratio observed at the recommended concentration of tracer compared to the BRET ratio in the presence of a saturating dose of unlabeled compound.

A.

NanoLuc®-HIPK4 Tracer K-10 Dose Response

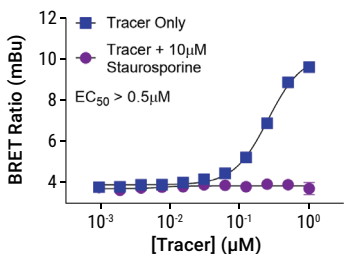


NanoLuc®-HIPK4 Optimizing [Tracer K-10]

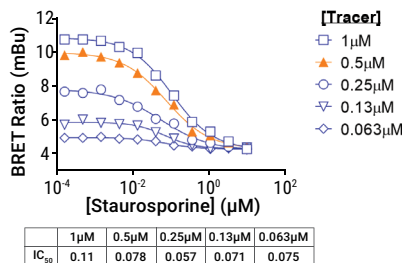


B.

NanoLuc®-DYRK1A Tracer K-10 Dose Response

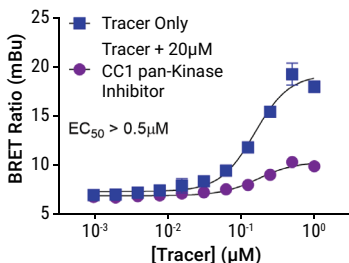


NanoLuc®-DYRK1A Optimizing [Tracer K-10]

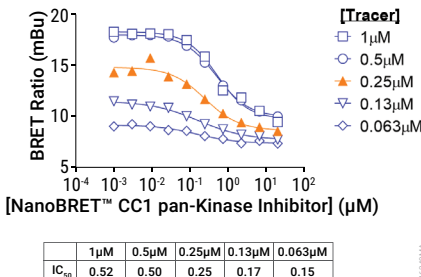


C.

JAK1-NanoLuc® Tracer K-10 Dose Response



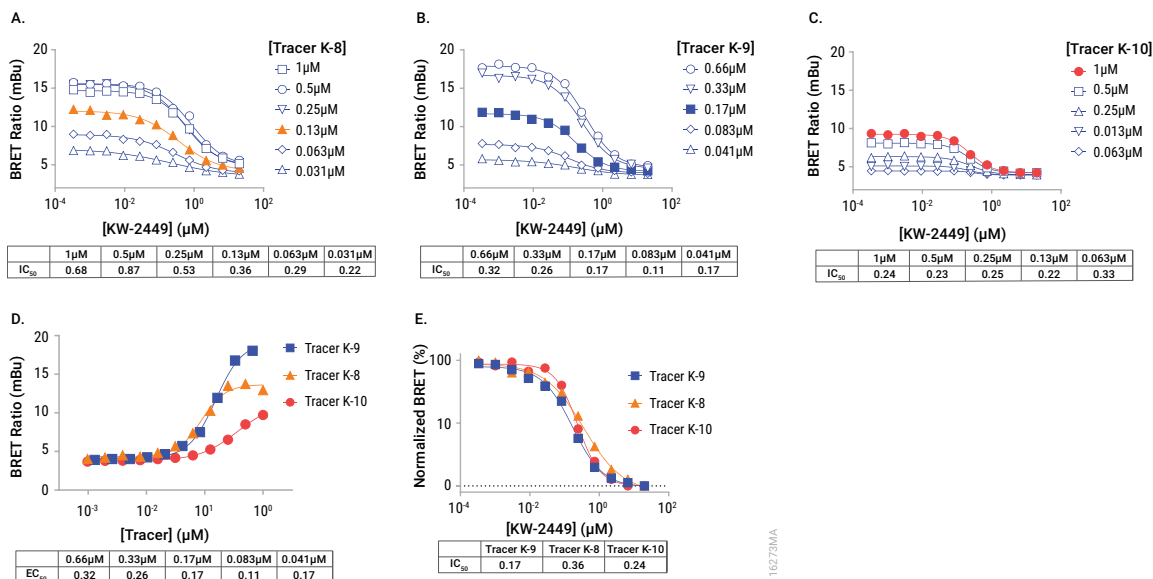
JAK1-NanoLuc® Optimizing [Tracer K-10]



**Figure 11. Representative examples of high, medium, and low window assays using NanoBRET™ Tracer K-10.** Examples of High Window (**Panel A**), Medium Window (**Panel B**) and Low Window (**Panel C**) assays are provided. Discussions of each assay category are provided in Table 4. HEK293 cells expressing individual kinase-NanoLuc® fusions were resuspended in Assay Medium and seeded into 96-well plates. Cells were treated with various concentrations of NanoBRET™ tracer and unlabeled test compound as a competitive inhibitor and incubated for 2 hours before adding 3X Complete Substrate plus Inhibitor Solution. BRET was measured using a GloMax® Discover System equipped with NanoBRET™ 618 filters (donor 450nm/8nm BP and acceptor 600nm LP). Raw BRET ratios were then converted to milliBRET units (mBU) and plotted vs. tracer concentration to determine apparent intracellular affinity of the tracer or unlabeled test compound. Our recommended NanoBRET™ Tracer K-10 concentrations for each target are shown in orange.

## 7.B. Comparable Compound Pharmacology with Different Tracers

In living cells, kinase targets of interest can potentially exist in multiple conformations, for example, the active and inactive phosphorylation states or in complex with different regulatory partners. When designing NanoBRET™ tracers, we choose parent compounds with minimal conformation bias in their binding behavior. This strategy produces tracers that should allow unbiased query of as many conformations of the target kinase as possible. Thus, if designed and used appropriately, different tracers that bind to the same kinase target will report comparable pharmacology for a given test compound. So long as the tracers have the same binding mechanism and are being used at optimized concentrations relative to their intrinsic affinity for the target, the use of different tracers to query the same kinase will produce comparable pharmacology for test compounds (see Figure 12 for an example).



**Figure 12. Compound Pharmacology for RIPK1 as Measured using 3 Different NanoBRET™ Tracers.** Tracers K-8 (**Panel A**), K-9 (**Panel B**), and K-10 (**Panel C**) designed from three different parent compounds were used to query the binding affinity of test compound KW-2449 to NanoLuc-RIPK1 in adherent HEK293 cells. Tracer concentrations used for comparison are depicted with solid symbols (0.13 μM for K-8, 0.17 μM for K-9, and 1 μM for K-10). (**Panel D**) Dose-response behavior for each tracer against NanoLuc®-RIPK1 shows differential potency for each tracer. (**Panel E**) Normalized dose-response curves for KW-2449 collected for each of the three tracers at the optimized concentrations depicted in solid symbols in Panels A-C. Comparable potency for KW-2449 was observed using each of the three tracers at appropriate concentrations.

### 7.C. Modifications to Tracer Preparation Workflow to Increase the Dispense Volume

Historically, we have had good success using the Complete 20X NanoBRET™ Tracer Reagent with 5µl dispense volumes in 96-well format for all NanoBRET™ Tracers. For customers that would like to dispense the tracer in a larger volume, we recommend evaluating dispensing the NanoBRET™ Tracer Reagent as a 10X working solution (10µl dispense volume) instead of the conventional 20X reagent. See Table 5 for example preparation procedures for the 10X vs 20X NanoBRET™ Tracer Reagents.

**Note:** This approach using a 10X NanoBRET™ Tracer Reagent works well for NanoBRET™ Tracer K-10, but it has not been globally evaluated for any other NanoBRET™ Tracers. Thus, assay re-validation may be required to re-optimize the tracer concentration for quantitative determination of test compound IC<sub>50</sub>. Consult Section 4.F for example validation data, as well as reference 4 for additional details pertaining to the principles of assay validation.

**Table 5. Alternate NanoBRET™ Tracer Preparation Protocols**

Protocol	Concentrated Tracer Stock	Working Tracer Stock	Preparation of Working Tracer Stock	Dispense Volume (96-well format)	Dispense Volume (384-well format)
Standard 20X	100X in DMSO	20X in TDB <sup>1</sup>	1 part concentrated + 4 parts TDB <sup>1</sup>	5µl	2µl
Alternate 10X	100X in DMSO	10X in TDB <sup>1</sup>	1 part concentrated + 9 parts TDB <sup>1</sup>	10µl	4µl

<sup>1</sup>TDB = Tracer Dilution Buffer

### 7.D. Achieving Adequate Plate Mixing for 96-Well and 384-Well Formats

Due to the viscosity of the tracer dilution buffer, special attention must be given to plate mixing to ensure that the Complete NanoBRET™ Tracer Reagent is adequately dispersed in the assay. Creation of a sufficient mixing vortex requires that the orbit of the mixer is smaller in diameter than the inside diameter of each well. For 96-well formats, most commercially available orbital shakers will be capable of dispersing the tracer reagent, though optimization of the shaking force may be required (typically by visual inspection). For the 384-well assay format, we recommend using specific equipment that will facilitate creation of a mixing vortex in the wells of 384-well plates. We have experience with horizontal shakers such as the VibraTranslator™ line of products from Union Scientific. Consult your mixing apparatus manufacturer to determine the suitability of your plate mixer for 384-well applications that use viscous reagents.

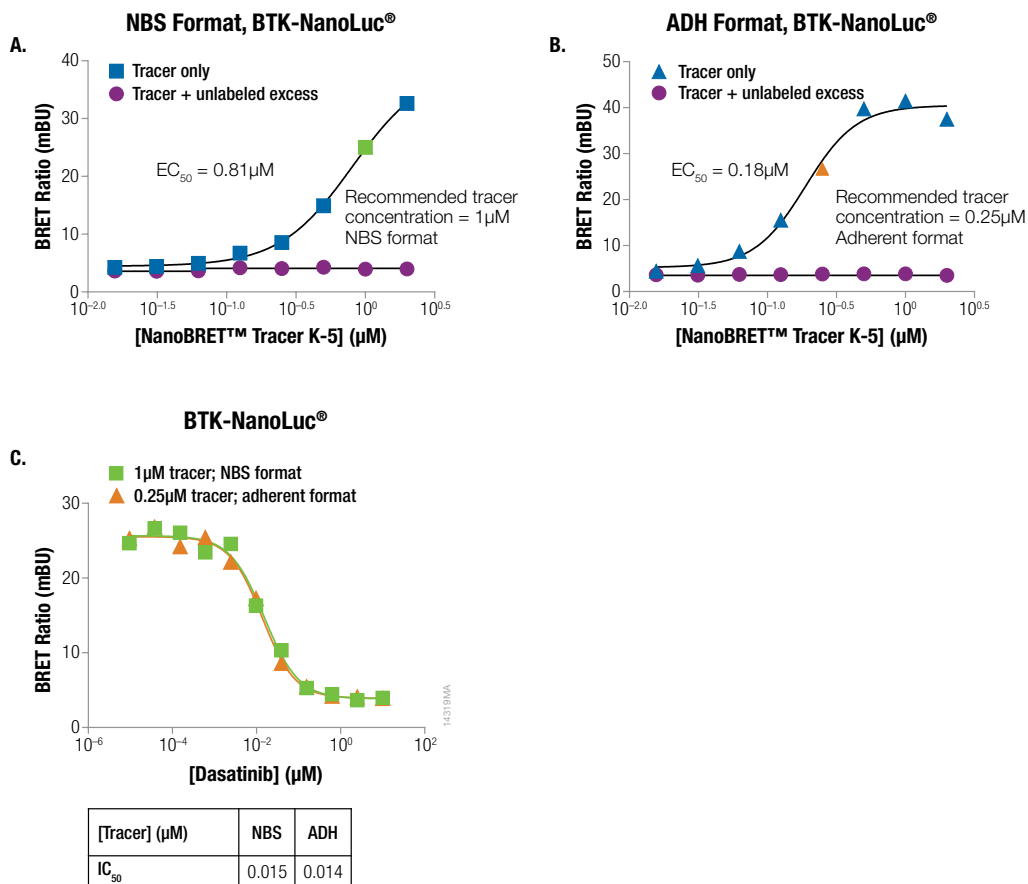


### **7.E. Performing NanoBRET™ TE Assays in Alternative Plate Formats (ADH vs NBS)**

As depicted above in Figure 3, the NanoBRET™ TE Assay can be performed in two primary plate formats, ADH and NBS, where ADH uses adhered cells in a tissue-culture treated assay plate (TC plates) and NBS uses freshly harvested cells suspended in a nonbinding surface (NBS) plate. While the ADH format (described in this technical manual) is the preferred format, each of the two formats offer potential advantages and disadvantages depending on the nature of the work being performed. The ADH format has the advantage in that it uses adhered cells and tissue-culture treated plates, which may be more comparable to other cell-based assays performed using adhered cells. Moreover, the ADH format creates workflow efficiencies that minimize cell handling steps and shorten the total execution time. Lastly, some tracers actually perform better in the ADH format in terms of tracer potency. In contrast, some test compounds or NanoBRET™ tracer behave unfavorably in TC treated plates and require assays to be performed in NBS plates for optimal performance.

For the NanoBRET™ TE Intracellular kinase assay, the ADH format is preferred and all new NanoBRET™ tracers including K-3, K-8, K-9, K-10, K-11 and K-12 have been tested and validated in the ADH format. Legacy NanoBRET™ tracers K-4 and K-5 have been revalidated in the ADH format for convenience. Importantly, both ADH and NBS formats can yield comparable compound potency information when the compound itself does not demonstrate a plate-type bias. For an example, see Figure 13, where compound potency for the BTK-NanoLuc® assay measured using tracer K-5 is equivalent in both ADH and NBS formats provided that the assays are revalidated and an optimized tracer concentration is selected for each format.

For users who would like to perform NanoBRET™ TE assays in the NBS format with a tracer that has not been validated in that format, or in an alternative plate type other than the plates we recommend above, we suggest that the user revalidate the assay. Assay validation requires re-measuring the tracer dose response and the effect of tracer concentration on test compound potency, as depicted above in Figures 4-8, and Figure 11. For additional details regarding assay validation, consult reference 4.



**Figure 13. Comparison of NanoBRET™ assay validation for BTK-NanoLuc® fusion protein in NBS (non-binding surface) versus ADH (adherent) format.** HEK293 cells expressing BTK-NanoLuc® fusion protein were assayed in either NBS format by the recommended protocol (see #TM603) or in ADH format. Cells were treated with increasing concentrations of NanoBRET™ Tracer K-5 with an excess of unlabeled compound (20µM) as a competitive inhibitor for 2 hours before adding 3X Complete Substrate plus Inhibitor Solution. BRET measurements were made on a GloMax® Discover System equipped with NanoBRET™ 618 filters (donor 450nm/8nm BP and acceptor 600nm LP). Raw BRET ratios were then converted to milliBRET units (mBU) and plotted vs. tracer concentration to determine apparent intracellular affinity of the tracer in either NBS format (**Panel A**) or ADH format (**Panel B**). Recommended tracer concentrations for compound IC<sub>50</sub> determination are highlighted in green (NBS format) or orange (ADH format), respectively. **Panel C** shows affinity of test drug dasatinib, determined in both NBS and ADH format at the recommended tracer concentrations, with both formats yielding comparable IC<sub>50</sub> values.

### 7.F. Preparing Stable Cell Lines Expressing NanoLuc® Fusion Proteins

Some users may prefer to utilize stable cell lines for the NanoBRET™ assay as opposed to cells that have been transiently transfected. This approach can help to shorten the assay workflow and improve day-to-day assay variability. However, the NanoLuc® expression vectors are designed for transient transfection and use relatively strong constitutive promoters (CMV). To avoid overexpression in stable cell lines, we recommend the use of attenuated promoters (i.e., CMV deletion promoters, the PGK promoter, or the TK promoter) for appropriate expression of the NanoLuc® fusion protein.

An alternative option to stable cell lines is the use of assay-ready cells that have been pre-transfected with the NanoLuc® fusion protein of interest. Assay-ready cells can be prepared in advance in bulk, aliquoted, and cryopreserved, after which individual tubes can be thawed on demand and used immediately in the NanoBRET™ TE assay. This approach can also help to shorten the assay workflow and improve day-to-day assay variability.

### 7.G. Extinction Coefficient of NanoBRET™ Tracers

NanoBRET™ Tracers K-3, K-4, K-5, K-8, K-9, K-10, K-11 and K-12 use the NanoBRET™ 590 fluorophore. The concentration of each NanoBRET™ Tracer was determined using an extinction coefficient of 83,000 M<sup>-1</sup> cm<sup>-1</sup> at 590nm. See Table 10.1 in reference for details (5).

### 7.H. References

1. Machleidt, T. *et al.* (2015) NanoBRET-A novel BRET platform for the analysis of protein-protein interactions. *ACS Chem. Bio.* **10**, 1797–1804.
2. Robers, M.B. *et al.* (2015) Target engagement and drug residence time can be observed in living cells with BRET. *Nature Comm.* **6**, 10091.
3. Vasta, J.D. *et al.* (2018) Quantitative, wide-spectrum kinase profiling in live cells for assessing the effect of cellular ATP on target engagement. *Cell Chem. Biol.* **25**, 206-214.
4. Robers, M.B. *et al.* (2019) Quantitative, real-time measurements of intracellular target engagement using energy transfer. *Syst. Chem. Biol.* 45-71.
5. Anthropological Genetics: Theory, Methods and Applications, Michael H. Crawford, ed. (2006) University of Cambridge Press.

## 7.1. Related Products

### NanoBRET™ TE Intracellular E3 Ligase Assays

Product	Size	Cat.#
NanoBRET™ TE Intracellular E3 Ligase Assay, CRBN	100 assays	N2910
	1,000 assays	N2911
	10,000 assays	N2912
NanoBRET™ TE Intracellular E3 Ligase Assay, VHL	100 assays	N2930
	1,000 assays	N2931
	10,000 assays	N2932

### Intracellular TE Nano-Glo® Substrate/Inhibitors

Product	Size	Cat.#
Intracellular TE Nano-Glo® Substrate/Inhibitor	100 assays	N2162
	1,000 assays	N2160
	10,000 assays	N2161
Intracellular TE Nano-Glo® Vivazine/Inhibitor	1,000 assays	N2200
	10,000 assays	N2201

### NanoBRET™ Target Engagement Intracellular HDAC and BET BRD Assays

Product	Size	Cat.#
NanoBRET™ Target Engagement Intracellular HDAC Assays	100 assays	N2080
	1,000 assays	N2081
	10,000 assays	N2090
NanoBRET™ TE Intracellular HDAC Complete Kit	1,000 assays	N2170
NanoBRET™ Target Engagement Intracellular BET BRD Assays	100 assays	N2130
	1,000 assays	N2131
	10,000 assays	N2140
NanoBRET™ TE Intracellular BET BRD Complete Kit	1,000 assays	N2180

**7.1. Related Products (continued)**

<b>Products</b>	<b>Size</b>	<b>Cat. #</b>
FuGENE® HD Transfection Reagent	1ml	E2311
	5 × 1ml	E2312
ViaFect™ Transfection Reagent	0.75ml	E4981
	2 × 0.75ml	E4982
Transfection Carrier DNA	5 × 20µg	E4881
	2 × 100µg	E4882

**Luminometers**

<b>Product</b>	<b>Size</b>	<b>Cat.#</b>
GloMax® Discover System	1 each	GM3000

For Research Use Only. Not For Use in Diagnostic Procedures

**8. Summary of Changes**

The following changes were made to the 10/22 revision of this document:

1. Added new Fast Track CDK11A -NanoLuc® Fusion Vector (Cat.# NF4601) and CDK11B-NanoLuc® Fusion Vector (Cat.# NF4611) to Table 3.
2. Updated document font.

**<sup>(a)</sup> NanoLuc® ORF TE Vector Limited Use Label License**

BY USE OF THIS PRODUCT, RESEARCHER AGREES TO BE BOUND BY THE TERMS OF THIS LIMITED USE LABEL LICENSE. If researcher is not willing to accept the terms of this label license, and the product is unused, Promega will accept return of the unused product and provide researcher with a full refund.

Researcher may use this product for research use only; no transfer or commercial use of this product is allowed. Commercial use means any and all uses of this product by a party in exchange for consideration, including, but not limited to (1) use in further product manufacture; (2) use in provision of services, information or data; and (3) resale of the product, whether or not such product is resold for use in research. Researcher shall have no right to modify or otherwise create variations of the nucleotide sequence of the luciferase gene. No other use of this product is authorized without the prior express written consent of Promega.

**In addition, researcher must:**

(1a) use Nano-Glo®-branded luminescent assay reagents (LARs) for all determinations of luminescence activity of this product; or

(1b) contact Promega to obtain a license for use of the product with LARs not manufactured by Promega.

**For uses of this product (NanoLuc® ORF Vector) for energy transfer (such as bioluminescence resonance energy transfer), researcher must:**

(2a) use NanoBRET™-branded luminescent assay reagents (LARs; e.g., NanoBRET™ Nano-Glo® Substrate), Intracellular TE Nano-Glo® Substrate/Inhibitor or Intracellular TE Nano-Glo® Vivazine™/Inhibitor for all determinations of luminescent activity; and

(2b) use NanoBRET™-branded energy acceptors (e.g., NanoBRET™ tracers, NanoBRET™ dyes, BRET-optimized HaloTag® ligands) for all determinations of energy transfer activity; or

(2c) contact Promega to obtain a license for use of the product for energy transfer assays using energy acceptors not manufactured by Promega. No license is needed if the energy transfer acceptor is a genetically encoded autofluorescent protein.

With respect to any uses outside this label license, including any diagnostic, therapeutic, prophylactic or commercial uses, please contact Promega for supply and licensing information. PROMEGA MAKES NO REPRESENTATIONS OR WARRANTIES OF ANY KIND, EITHER EXPRESSED OR IMPLIED, INCLUDING FOR MERCHANTABILITY OR FITNESS FOR A PARTICULAR PURPOSE, WITH REGARD TO THE PRODUCT. The terms of this label license shall be governed under the laws of the State of Wisconsin, USA.

**<sup>(b)</sup> NanoBRET™ TE Tracers Limited Use Label License**

BY USE OF THIS PRODUCT, RESEARCHER AGREES TO BE BOUND BY THE TERMS OF THIS LIMITED USE LABEL LICENSE. If researcher is not willing to accept the terms of this label license, and the product is unused, Promega will accept return of the unused product and provide researcher with a full refund.

Researcher may use this product for research use only; no commercial use is allowed. Commercial use means any and all uses of this product by a party in exchange for consideration, including, but not limited to (1) use in further product manufacture; (2) use in provision of services, information or data; and (3) resale of the product, whether or not such product is resold for use in research. Researcher shall have no right to modify or otherwise create variations of the product. No other use or transfer of this product is authorized without the prior express written consent of Promega.

**For uses of this product for energy transfer (such as bioluminescence resonance energy transfer), researcher must:**

(i) use NanoLuc®-branded luciferase or derivatives for all energy transfer determinations conducted with this product; and

(ii) use NanoBRET™-branded luminescent assay reagents (LARs; e.g., NanoBRET™ Nano-Glo® Substrate), Intracellular TE Nano-Glo® Substrate/Inhibitor or Intracellular TE Nano-Glo® Vivazine™/Inhibitor for all determinations of luminescent activity; or

(iii) contact Promega to obtain a license for use of the product with LARs not listed above or manufactured by Promega.

**In addition, researcher must:**

Contact Promega to obtain a license for use of the product in assays not involving bioluminescence resonance energy transfer (BRET).

With respect to any uses outside this label license, including any diagnostic, therapeutic, prophylactic or commercial uses, please contact Promega for supply and licensing information. PROMEGA MAKES NO REPRESENTATIONS OR WARRANTIES OF ANY KIND, EITHER EXPRESSED OR IMPLIED, INCLUDING FOR MERCHANTABILITY OR FITNESS FOR A PARTICULAR PURPOSE, WITH REGARD TO THE PRODUCT. The terms of this label license shall be governed under the laws of the State of Wisconsin, USA.



©NanoBRET™ TE LAR Limited Use Label License

BY USE OF THIS PRODUCT, RESEARCHER AGREES TO BE BOUND BY THE TERMS OF THIS LIMITED USE LABEL LICENSE. If researcher is not willing to accept the terms of this label license, and the product is unused, Promega will accept return of the unused product and provide researcher with a full refund.

Researcher may use this product for research use only; no commercial use is allowed. Commercial use means any and all uses of this product by a party in exchange for consideration, including, but not limited to (1) use in further product manufacture; (2) use in provision of services, information or data; and (3) resale of the product, whether or not such product is resold for use in research. Researcher shall have no right to modify or otherwise create variations of the product. No other use or transfer of this product is authorized without the prior express written consent of Promega.

**For uses of this product intended for energy transfer (such as bioluminescence resonance energy transfer) to acceptors other than genetically encoded autofluorescent protein, researcher must:**

- (i) use NanoBRET™-branded energy acceptors (e.g., NanoBRET™ tracers, NanoBRET™ dyes, BRET-optimized HaloTag® ligands) for all determinations of energy transfer activity; or
- (ii) contact Promega to obtain a license for use of the product for energy transfer assays using energy acceptors not manufactured by Promega.

With respect to any uses outside this label license, including any diagnostic, therapeutic, prophylactic or commercial uses, please contact Promega for supply and licensing information. PROMEGA MAKES NO REPRESENTATIONS OR WARRANTIES OF ANY KIND, EITHER EXPRESSED OR IMPLIED, INCLUDING FOR MERCHANTABILITY OR FITNESS FOR A PARTICULAR PURPOSE, WITH REGARD TO THE PRODUCT. The terms of this label license shall be governed under the laws of the State of Wisconsin, USA.

©Licensed from Kazusa Genome Technologies.

©U.S. Pat. Nos. 9,056,885 and 10,139,400, European Pat. No. 2782916 and other patents pending.

©U.S. Pat. No. 8,809,529, European Pat. No. 2635582 and other patents and patents pending.

©U.S. Pat. Nos. 8,557,970, 8,669,103, 9,777,311, 9,840,730, 9,951,373, 10,633,690 and 10,774,364, European Pat. Nos. 2990478, 2456864, 2635595 and 3181687 and other patents and patents pending.

©U.S. Pat. Nos. 10,067,149 and 10,024,862 and other patents and patents pending.

©Patent Pending.

© 2020–2022 Promega Corporation. All Rights Reserved.

GloMax, Nano-Glo and NanoLuc are registered trademarks of Promega Corporation. NanoBRET is a trademark of Promega Corporation.

CLARIOstar is a registered trademark of BMG LABTECH. EnVision is a registered trademark of PerkinElmer, Inc. FuGENE is a registered trademark of Fugent, L.L.C., USA. Opti-MEM is a registered trademark of Life Technologies, Inc. Varioskan is a registered trademark of Thermo Fisher Scientific.

Products may be covered by pending or issued patents or may have certain limitations. Please visit our Web site for more information. All prices and specifications are subject to change without prior notice.

Product claims are subject to change. Please contact Promega Technical Services or access the Promega online catalog for the most up-to-date information on Promega products.